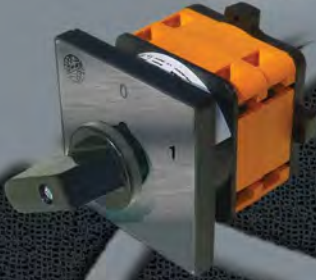




# KATALOG

PAKET ŞALTER  
CAM SWITCH



İZOLATÖR  
INSULATOR



IP 65 POLYESTER PANO  
IP 65 POLYESTER ENCLOSURE



# CATALOG

PAKET ŞALTER  
CAM SWITCH



IP 65 & IP 54 MUHAFAZA KUTUSU  
IP 65 & IP 54 CAM SWITCH ENCLOSURE



IP 65 ABS/POLİKARBON PANO  
IP 65 ABS/POLYCARBONATE ENCLOSURE





## İÇİNDEKİLER

### CONTENTS

**AÇMA - KAPAMA ŞALTERLERİ**

*ON - OFF SWITCHES*

**KİLİTLİ EMNİYET MEKANİZMALI ŞALTERLER**

*DOORLOCK SAFETY SWITCHES*

**KUTUP DEĞİŞTİRİCİ ŞALTERLER**

*CHANGEOVER SWITCHES*

**MOTOR KUMANDA ŞALTERLERİ**

*MOTOR CONTROL SWITCHES*

**ÖLÇÜ KOMUTATÖRLERİ**

*MEASURING SWITCHES*

**KADEMELİ ŞALTERLER**

*MULTI-STEP SWITCHES*

**GAZALTI KADEMELİ ŞALTERLER**

*MIG/MAG WELDING STEP SWITCHES*

**ŞALTER YEDEK PARÇALARI**

*SWITCH SPARE PARTS*

**İZOLATÖRLER**

*INSULATORS*

**MUHAFAZA KUTULARI IP 54 - IP 65**

*CAM SWITCH ENCLOSURES IP 54 - IP 65*

**POLYESTER ve ABS/POLİKARBON PANOLAR IP 65** *POLYESTER and ABS/POLYCARBONATE ENCLOSURES*



OPAS ELK. MLZ. LTD. ŞTİ. 30 yıldır sektöre yeni bir soluk, müşteri memnuniyeti getirmenin gururunu yaşıyor. Paket şalter piyasasına yaptığı yeniliklerle adını duyuran OPAS, Türkiye’de önemli bir bayilik ağına sahiptir ve dünyanın 35 ülkesine de ihracatta kalite ve güvenini sunarak dünyanın elektriğine yön vermektedir.

Yaşanan ekonomik krize rağmen OPAS, yeni projelere ve teknolojilere her geçen gün yatırım yapmaya, istihdamı artırmaya devam etmektedir.

2010 yılı itibarı ile OPAS ürettiği paket şalterlere ek olarak polyester ve polikarbon panolar, izolatör ve aydınlatma grubu ile sektöre yeni bir soluk getirmeye, sizlere hizmet vermeye devam etmektedir.

OPAS, ISO(BUREAU VERITAS), CE ve TSE belgelerine sahiptir.

OPAS yerli sanayimiz içinde haklı gururumuzu sürdürmeye devam etmektedir.

*OPAS will continue to share the pride of passing the 30-year period with you by improving the customer satisfaction and bringing innovation to the sector. As you know, OPAS community was established on 3000 square meter space in Turkey as a hundred percent domestic production.*

*OPAS, which has introduced improvements to cam switch market, has a significant network of franchise in both Turkey and the world, whose products are being used in 35 countries in the world.*

*Contrary to the economical crisis in the world, OPAS continues to invest on new projects and develops a new product every passing day.*

*OPAS completed its investments and launched production of applications of polyester material which are polyester enclosures, isolators and lighting products and OPAS will continue to bring a new breath to the sector.*

*Newly developed polyester and polycarbon enclosures and their plexiglass versions have been introduced to our dear customers. Last but not least, our company and products have the following certifications: ISO 9001: 2008 ( BUREAU VERITAS ) , CE , TSE.*



ISO 9001:2008



No: 91533

No: 00229



Kalite Yönetim Sistemi  
TS EN ISO / IEC17021  
AB-0031-YS



EN 60947-3  
No:1401/4066

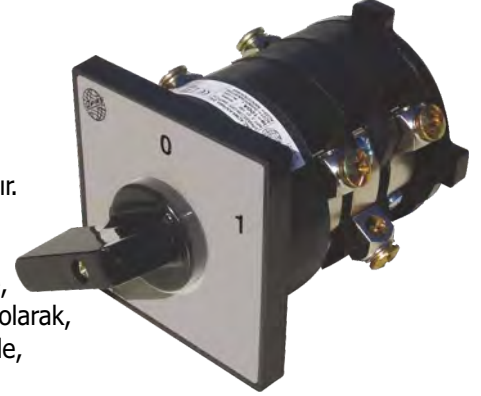
EN 60947-5-1  
No:140001/4066



## PAKET ŞALTERLER HAKKINDA GENEL BİLGİ

Paket şalterler sık açma-kapama gerektiren aşağıdaki ana ve yardımcı devrelerde kullanılır.

- 1- Bir, iki ve üç fazlı elektrik devrelerinin açma-kapamasında,
- 2- Gerilim-akım değerlerini ölçen cihazların kumandasında,
- 3- Motorların beslenme devrelerini açıp-kapayarak yol verme veya durdurma işlemlerinde,
- 4- Transformatör ve kaynak makinalarında açma-kapama, selektör ve kademe değiştirici olarak,
- 5- Kutup değiştirici veya gruplama şalteri olarak şebeke-regülatör gibi ihtiyaç olan yerlerde,
- 6- Otomatik geri dönüşlü startlı şalter olarak kullanılır.



Paket şalterlerimiz, en kaliteli izolasyon malzemesi ve gümüş alaşımli perçin çakılmış bakır kontak kullanılarak şalt cihazları alanında modern teknolojilerle istifade etmek suretiyle, en yüksek mühendislik standartlarına göre imal edilmektedir.

Seri üretilmekte olan temel yapı elemanları sayesinde şalterler, çok kısa zamanda monte edilip, her türlü açma-kapama gereksinimini yerine getirmektedir. Pano üzerine, içine, trafo merkezlerinin alçak gerilim tarafına, şalt panolarına, dağıtım kabinlerine monte edilebilir, madencilik, gemicilik ve benzeri sahalarda çeşitli ihtiyaçlara cevap verir.

Her şalter, şalt programına göre kolayca monte edilip sökülebilen çeşitli açma-kapama elemanlarından meydana gelmiştir. Açma-kapama elemanlarının gövdesi, kaçak akım ve ark etkilerine dirençli plastik malzemeden yapılmıştır. Her elemanı birbirinden 180 derece açı ile yerleştirilmiş tek açmalı iki kontak çifti vardır. Kontak çifti, iki sabit kontak ile hareketli kontak köprüsünden oluşur.

Kontak kapanması basınç yayı, açılması ise şalt elemanın merkezindeki bir kama (program diski) sayesinde olur. Bütün şalt elemanlarının birbirlerine sıkı bir şekilde bağlı olmasıyla kontakların hemen hemen aynı anda açılıp-kapanmaları sağlanır.

Çift kontak paralel açma ve elektrik arklarına dayanıklı bakır kontaklara özel gümüş alaşımli perçinler sayesinde yüksek akım kesme kapasitesi ve uzun ömür sağlamaktadır. Şalterin şalt açıları 30 derece, 45 derece, 60 derece ve 90 derece şeklindedir.

## GENERAL INFORMATION ABOUT CAM SWITCHES

*Cam Switches are used at the following main and auxiliary circuits requiring frequent switching on-off.*

- 1-*In switching on-off of single, two and three-phase electric circuits,*
- 2-*In controlling of devices measuring voltage-current values,*
- 3-*In processes of starting or stopping by switching on or off the supply circuits of motors,*
- 4-*As on-off switch, selector and step-alternator in transformers and welding machines,*
- 5-*As pole-alternator or grouping switch, in required places such as network-regulator,*
- 6-*As automatic, reversible switch with start.*

*Our Package switches are manufactured according to the highest engineering standards by benefiting from the modern technological developments in the range of switch devices by using the highest-quality isolation materials and silver compound riveted copper contact. Thanks to the basic structural elements produced in series, the switches are mounted in a very short time and perform the function of any kind of switching on-off. It can be mounted on the low voltage side of transformers on or in the board, on switchboards, at distribution panels and meets the various requirements of mining, navigation and etc as well.*

*Each switch consists of various on-off elements that can be easily assembled-disassembled according to the switching program. The casing of the switching on-off elements are made of plastic material resistant to electric leakage and arc effects. There are two pair of contacts with a single opening and each component is positioned to 180° to the other. Contact pairs consist of two fixed contacts and a movable contact bridge.*

*Contact closing is realized through pressure spring and opening through a wedge (program disc) at the center of the switch element. Due to the fact that all the switch elements are connected tightly to each other, the contacts are provided to open and close synchronously. High current breaking capacity and long life-span is provided through special silver compound rivets resistant to electric arcs and double-contact parallel opening. The switching angles of switches are as follows: 45°, 60° and 90°.*

**KAPALI TİP KÜÇÜK, ORTA VE BÜYÜK ŞALTERLER**


Kapalı tip şalterler genel kullanım olarak tasarlanmış olup, kumanda sistemlerinde, ölçü komutatörlerinde, kademeli, kutup değiştirici ve motor kumanda devrelerinde güvenle kullanılır. Hava ve yüzey atlama gerilim mesafeleri 690 volttan daha büyüktür.

Kontakt malzemeleri ve kablo bağlantı klemensleri EN 60947-3'e uygundur. Bütün klemens ve kontakt bağlantıları el temasına karşı korumalıdır. Bu ise VDE 0106. Bölümün 100. maddesi veya VBG4'e uygun olarak üretilmiştir.

Yıldız/Düz Tornavida ile çalışmalarda kontakt vidaları seri ve emniyet olarak sıkılabilir. Şalterlerin tasarımında azami yer tasarrufu, kolay montaj ön planda tutulmuş, kullanımda kolaylık ve zaman tasarrufu sağlayacak bir yapıdadır. Şalterlerin anahtarlama açıları 30-45-60-90 derecedir.

Hareketli kontakt elemanları bakır olup, gümüş içerikli perçinler kullanılır. Kontaktlar basarak açıp-kapama yaptığından emniyetle çalışırlar. Tahrik mili üzerinde bulunan kamlar, yani programlar diskleri kontaktların aynı zamanda açıp kapasını gerçekleştirdiğinden bütün kumanda devrelerinin veya fazlarının gecikmesiz aynı anda açıp kapasını temin eder.

Hammaddesi yanmaya dayanıklı ve alev almayan "PBT" plastiktir. Kapalı tip şalterler, EN 60947-3, IEC 947-3 ve diğer arası normlara ve çevre şartlarının özellikleri dikkate alınarak AR-GE çalışmaları yapılmıştır. AB ve bazı dünya devletlerinin kabul ettiği CE normlarına ve kriterlerine uyumlu hale getirilmiştir. Kontakt ve köprüler tamamen kapatılarak elektriğin el ile teması kesilmiştir.

Kullanım şartları ve isteğe bağlı olarak kilitli asma kilit kullanılır. Dünya standardı normlarına göre paket şalterlerimiz; Ana şalter, yüksek kesici şalterler ve kesici şalterler olarak üç şekilde kullanılabilirler. Yükteki kesici şalterler en az AC23A. Kullanım şartlarına dayanıklı olmalıdır. Kesici şalterler ise yük devresini kontaktör üzerinden kapatmayı temin eden yardımcı kontakt bulunacak şekilde olmalıdır. Kesici şalterlerin seçiminde sürekli çalışma akımı dikkate alınmalıdır. Şalterlerin seçimini yaparken teknik değerler bölümünü dikkatli incelemek gerekir.

**CLOSED TYPE SMALL, MEDIUM AND LARGE SIZE SWITCHES**

*Close type switch has been designed for general use in control systems. User safety, less space and easy mounting are the primary advantages of this special design. Padlock can be used on locked type as in our other types of switches.*

*Closed type switch has been developed according to the standards of EN6097-3, IEC and CE which meets the world standards about quality and ecology. Contacts and terminals are concealed to prevent electric shocks caused by touch. The body material is PBT which can resist and is non-flammable up to very high temperatures. Contact materials and terminals fully comply with EN 60947-3.*

*Moveable contact elements are of copper and silver riveted compound which enables high conducting. Control circuits operate without delay due to program discs, cams and contacts in the switch moving synchronously. The switching angles are 45°, 60°, 90°.*

*The user must pay attention to the technical specifications before defining type and capacity of the cam switch to be used on the control panel or machine.*



## KAPALI TİP MİNİK BOY ŞALTERLER

### CLOSED TYPE MINI SIZE SWITCHES

Yeni teknoloji ve uluslararası standartlara göre geliştirilmiş olan MİNİ tip paket şalterlerimiz kumanda devrelerinde güvenle kullanılabilir.

Bu şalterler minimum ölçülerde tasarlanmış olup dokunmaya karşı tam korumalıdır.

Modern tasarımlı paket şalterlerimiz hızlı kablo montajına olanak sağlayan vida bağlantı sistemine sahiptir.

Az montaj yeri gerektiren MİNİ tip şalterlerimiz standart olarak 35x35 mm ön plakalı, 4 delik montajlı olarak 6A, 8A ve 10A olarak üretilmektedir.

### SQUARE TYPE MINI SIZE SWITCHES

Mini square type of cam switches has been developed regarding to international standards that safe using in control circuit.

Mini type of switches has designed by minimum dimensions for finger protection.

Our modern design of cam switches have easy screw connection system for fast cable mounting.

Mini type of switches have standard front frame 35x35mm, 4 assembly holes that need less space for montage and manufactured in 6A and 10A

- Dokunmaya karşı tam koruma
- Hızlı ve kolay montaj
- Minimum ölçü
- Modern tasarım
- Yeni teknoloji
- Isıya dayanıklı termoplastik gövde
- Yüksek kontak teması

- Protection against touching
- Easy and quick assembling
- Minimum size
- Modern design
- New technology
- Heat-resistant thermoplastic body
- High contact conductivity



## YUVARLAK TİP ŞALTERLER

### ROUND TYPE CAM SWITCHES

#### Şalterlerin Doğru Seçimi :

Yükte kesici şalterler, en az AC-23A kullanım şartlarına dayanıklı olmalıdır. Kesici şalterlerin seçiminde sürekli çalışma akımı dikkate alınır. Ana şalter olarak kullanıldığında, makina üzerindeki en büyük motorun tam frenlenmiş konumda çekeceği akım ile diğer tüm sarf birimlerinin toplam akım değerlerine eşit olmalıdır. Ayrıca, tüm sarf birimlerinin nominal çalışma akım değeri toplamı, şalterin sürekli çalışma akım değeri üzerine çıkmamalıdır. Teknik değerler kısmı iyi incelenmelidir.



These package switches with the design registration held by OPAŞ have superior characteristics: body heat-resistant up to 1200°C, switch components positioned at 120° to each other, control of 3 phases in a block and 3 moving contacts with a single opening moving contacts bridge the fixed one and contain copper bars, 2 and 3 mm in width. Special silver rivets mounted on moving contacts provide a long life, and high capacity to break currents, and prevent excessive arcing. Package switches have high capacity to break currents and adequate mechanical and electrical strength. They can accept short overcharges and, when used with a fuse, feature high resistance to peak short-circuits.

#### Selecting the right switches

Charge breaking switches must be at least AC-23A and have adequate strength against conditions of use. In selecting breaking switches the continuous operating current will be considered. If used as the main switch, it must be rated up to the current to be consumed by the fully braked largest engine of the machine, plus the current to be consumed by all the other components. In addition, the nominal operating current of all the current-consuming components should not exceed the continuous operating current of the switch. Technical values should be checked carefully.

Vida / Screw, Mandal / Knob, Conta / Gasket, Etiket / Indicator Plate, Çerçeve / Front Plate, Montaj Ara Kapağı / Metal Front Mounting, Mekanik Blok / Top Program Blocks, Contalı Mil / Shaft, Gövde (Kontakt Blok) / Contact Blocks, Alt kapak / Base Mounting Bracket

Canbaz / Plunger, Yayı / Spring, Yıldız / Spindle, Ay / Cam D.K.P., Hareketli Kontakt / Active Contact, Sabit Kontakt / Fixed Contact, Kömür / Plunger, Pul / Spangle, Program Diski / Prog. Disc, Pul Vidası / Spangle Screw, Kömür Yayı / Plunger Spring

Standart Üretim / Standard production: (10 - 16 - 20 - 25) A

Mandal / Knob, Etiket / Indicator Plate, Çerçeve / Front Plate, Montaj Kapağı / Front Mounting, Mekanik Blok / Mechanical Block, Gövde (Kontakt Blok) / Contact Blocks, Alt kapak / Base Mounting Bracket

Canbaz / Plunger, Yayı / Spring, Yıldız / Spindle, Ay / Cam D.K.P., Hareketli Kontakt / Active Contact, Sabit Kontakt / Fixed Contact, Kömür / Plunger, Pul / Spangle, Program Diski / Prog. Disc, Pul Vidası / Spangle Screw, Kömür Yayı / Plunger Spring

Standart Üretim / Standard production: (6-8-10) A

Vida / Screw, Mandal / Knob, Conta / Gasket, Etiket / Indicator Plate, Çerçeve / Front Plate, Montaj Kapağı / Front Mounting, Mekanik Blok / Mechanical Block, Contalı Mil / Shaft, Gövde (Kontakt Blok) / Contact Blocks, Alt kapak / Base Mounting Bracket

Canbaz / Plunger, Yayı / Spring, Yıldız / Spindle, Ay / Cam D.K.P., Hareketli Kontakt / Active Contact, Sabit Kontakt / Fixed Contact, Kömür / Plunger, Pul / Spangle, Program Diski / Prog. Disc, Pul Vidası / Spangle Screw, Kömür Yayı / Plunger Spring

Standart Üretim / Standard production: (10 - 16 - 20 - 25 - 32 - 40 - 50 - 63 - 80 - 100 - 115 - 125) A

YUVARLAK TİP ŞALTERLER (B4) / ROUND TYPE SWITCHES

Tahrik Mandal / Ball Handle, Conta / Gasket, Fon kağıdı / Indicator Plate, Çerçeve / Front Plate, Mekanik Blok Kapağı / Metal Front Mounting, Mekanik Blok / Top Program Blocks, Gövde (Kontakt Blok) / Contact Blocks, Mil / Shaft, Alt kapak / Base Mounting Bracket

Tahrik Mandal Vidası / Screw for Ball Handle, Çerçeve Vidası / Front Screw, Tespit Vidaları / Mounting Metal Screw, Kömür / Plunger, Yayı / Spring, Çark Kömürleri / Plunger For Spindle, Kam / Cam, Sabit Kontakt / Fixed Contact, Hareketli Kontakt / Active Contact, Bağlantı Kulakları / Bridge, Pul Vidası / Spangle Screw, Yıldız / Spindle, Köprü / Bridge

Standart Üretim / Standard production: (160 - 200 - 250 - 315) A

## BÜYÜK KARE TİP ŞALTERLER / LARGE SQUARE TYPE



## NORMAL ve KAPALI PAKET ŞALTERLERDE ÖN PANEL TİPLERİ

Normal ve kapalı paket şalterlerimizin ön paneli 4 tipte tasarlanmıştır.

## 1 - Standart Tip

Siyah çerçeve, beyaz veya gri ekran fonundan oluşmaktadır.

## 2 - Kilitli Tip ( Kilitli Mekanizma)

Ana şalter veya emniyet şalteri üzerinde kullanılmak üzere, şalter kapalı konumdayken 1-2 asma kilit takılabilir.

Renk Kombinasyonu;

Çerçeve : Sarı ( İsteğe bağlı olarak siyah, kırmızı yapılabilir.)

Mandal : Kırmızı ( İsteğe bağlı olarak sarı, siyah olabilir. )

## 3 - Geniş Çerçeveli

Genel olarak makinelerin üzerine, 4 köşesinden monte edilerek, fiziksel olarak güzel görünüm vermektedir.

## 4 - Etiketli Çerçeve

Siyah çerçeve, beyaz veya gri ekran fonundan oluşmaktadır. Etiketli kısım standarttır.

## FRAME TYPES FOR STANDARD AND CLOSED TYPE SWITCHES

The front panel of standard cam switches is designed in 4 types:

## 1 - Standard Type

Consists of black frame, white or grey label.

## 2 - With Padlock (Locked Mechanism)

1-2 padlocks may be mounted on the switch as closed, in order to be used as the main switch or safety switch.

Color combination;

Frame: Yellow (may be black, red as optional.)

Latch: Red(may be yellow, black as optional.)

## 3 - Mounting Frame

Generally mounted to 4 corners of the machines and gains physically a nice view

## 4 - Labelled Frame

Consists of black frame, white or grey label. Labelled part is standard.



STANDART  
STANDARD



KİLİTLİ  
WITH PADLOCK



GENİŞ ÇERÇEVELİ  
MOUNTING FRAME



ETİKETLİ ÇERÇEVE  
LABELLED FRAME

**STANDART, KİLİTLİ ve GENİŞ ÇERÇEVELİ ŞALTER TİPLERİ ARASINDA FİYAT FARKI YOKTUR.  
NO PRICE DIFFERENCE FOR DIFFERENT TYPES OF FRAMES**





## IP 65 POLYESTER PANO ÖZELLİKLERİ / IP 65 POLYESTER ENCLOSURE'S QUALIFICATIONS

Yalıtıcıdır; elektriği iletmez. Oluşabilecek elektrik arkını 2 dakika gibi sürede sızdırmaz. Cam elyaf katkılıdır; Oluşan ark vb.den dolayı yangınlara karşı müdahale imkanı sağlar. Çabuk alev almaz. Su ve nem geçirmez; Dış atmosferik koşullara -50°C / +200°C dayanıklıdır. Paslanmazlık ve korozyonlara dayanıklılık; Boya ve bakım maliyeti yoktur. Darbelere ve asitlere karşı dayanıklıdır. UHT katkılıdır; Ateşe ve güneşten gelen UV ışınlarına karşı dayanıklıdır. HALOJEN FREE'dir. Antibakteriyeldir; Mikro organizma üretmez (su ve sabunla kolay temizlenir). Modülerdir; Kolayca işlenebilir montaj kitiyle kolay montajlanır. IP 65/67; sert hava koşullarına ve ortamda olan toz ile benzer etkilerden etkilenmez ve iç yapıyı korur.

*Isolated; Does not conduct electricity. Isolates possible electric arcs for 2 minutes. Fiberglass doped; Provides opportunity to act against possible deflagrations and resists fire. Water and humidity resistant; Resistant to environmental conditions of -50°C to 200°C. Oxidation and corrosion resistant; No paint or maintenance costs. Resistant to impacts and acid. UHT resistant; Resistant to fire and UV lights from the sun. It is halogen-free. Antibacterial; Does not harbor micro-organisms. Easily cleaned with soap and water. Modular; Ease of installation with the easy-to-use assembly kit. IP 65/67; Resistant to extreme environmental conditions and unaffected by impurities like particles in the air, thus the inner structure is protected.*

## IP 65 POLİKARBON / ABS PANO ÖZELLİKLERİ / IP 65 POLYCARBONATE / ABS ENCLOSURE'S QUALIFICATIONS

ABS reçineleri akrilonitril, butadien ve stiren den elde edilen kopolimer lerdir.AKRİLONİTRİL ; kimyasal olarak sağlamlık, STİREN; kolay işlenebilirlik, sertlik ve parlaklık sağlar.BUTADİEN ;ise soğuk hava şartlarında ve oda sıcaklığında darbelere dayanımı ve dayanıklılık sağlayıcı olarak rol oynar.

Polikarbonatlar, termoplastiklerin özel bir grubudur. Işık geçirgenliği cama çok yakındır, ışık iletimi ; ışığın homojen olarak dağılması en önemli özelliğidir. Aynı zamanda ısıya, kimyasal maddelere, çizilmeye, darbeye dayanıklılığı yüksek, gıdaya uygun, hafiflik , UV koruması, ateşe karşı dayanıklılık, alev yaymazlık özelliği, ses ve ısı yalıtımı olan şeffaf plastikler diyebiliriz.

*ABS resins are copolymer that is made of acrylonitrile, butadiene and styrene. Acrylonitrile; provides chemical integrity, Styrene; provides processability, solidity and gloss. Butadiene; provides impact resistance and durability in extreme environmental conditions.*

*Polycarbonates are a special group of thermoplastics. Their transparency is close to glass's. Transparency; homogen dispersal of the light is the most important specification. Also they can be described as transparent plastics with resistance to heat, chemicals, scratching an impact, suitability to food, lightness, UV protection, fire resistance, resistance to spreading flames, noise and heat isolation.*

Polikarbonat kullanım sıcaklık aralığı : -100° C den + 135° C ye  
Polikarbonat ın erime sıcaklığı : 270°C / 380° C civarı  
Polikarbonatın kırılma endeksi : 1.585 ±0.001  
Polikarbonatın ışık geçirme endeksi: 90 % ± 1 %  
OPAŞ ABS Panoları bu özellikleri taşımaktadır.

*Polycarbonate usage temperature range: -100°C to 135°C  
Polycarbonate melting temperature:~270 - 380°C  
Polycarbonate fracture index:1,585 ± 0,001  
Polycarbonate transparency index:90% ± 1%  
OPAŞ ABS enclosures carry these qualifications.*

İki çeşit ürünümüz vardır.

1- opak 2-polikarbon

Opak denilen ürün cam kapaksız olup tamamı ABS den üretilmiştir. Polikarbon ise ; şeffaf kapağın polikarbon imal edilmesinden dolayıdır.Yani gövde ABS, şeffaf kapak polikarbonur.

*We have two kind of products*

*1- opaque 2- polycarbonate*

*Opaque products are without glass cover, manufactured by ABS completely. Transparent cover manufactured by polycarbonate. Casing is ABS, glass cover is polycarbonate.*

## İZOLATÖRLERİN ÖZELLİKLERİ / INSULATORS' QUALIFICATIONS

Gri PBT malzemeden yapılır. Vida ve somun kısımları nikel kaplamadır. 0-5000 V atlama testinden başarıyla geçmiştir. PBT malzemenin özelliğinden dolayı 400C'ye kadar dayanıklıdır. Metrik 5-6-8 olarak üretilir.

*Insulators made with gray PBT material. Screws and bolts are nickel-coated. tested and proved to be dielectric up to 5000V because of the PBT material, insulators are resistant up to 400C. Insulators are produced in metric 5-6-8 sizes.*

### KORUMA SINIFLARININ AÇIK OKUNUŞU

### PROTECTION DEGREE

İlk hane kutunun katı yabancı maddelerin tehlikeli parçalara erişimine karşı sağladığı korumayı belirtir.  
*The first digit indicates the level of protection that the enclosure provides against access to hazardous parts (e.g., electrical conductors, moving parts) and the ingress of solid foreign objects.*

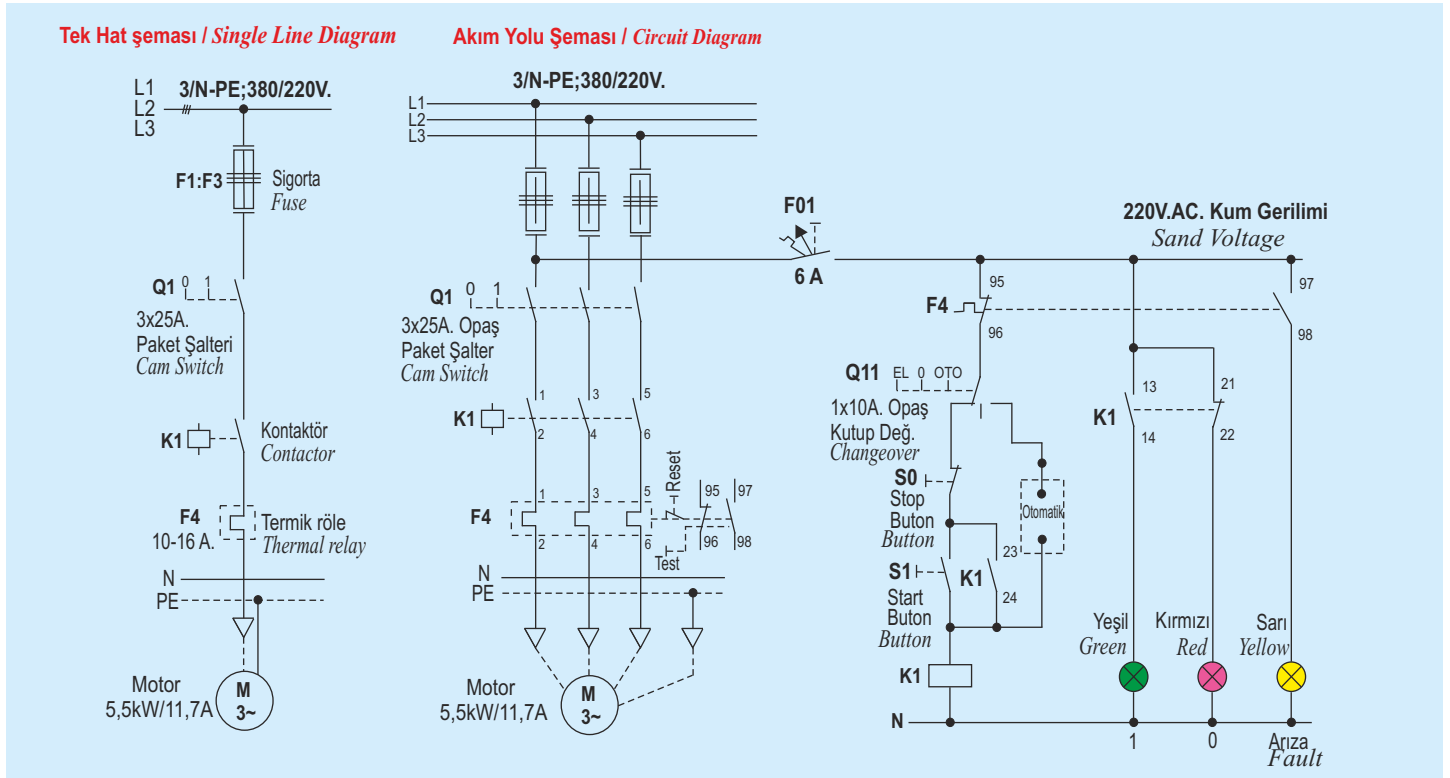
Zararlı su girişine karşı kutu içindeki ekipmanın korunması  
*Protection of the equipment inside the enclosure against harmful ingress of water.*

IP	Testler	Tests
0	Korumasız	No protection
1	Vücutun herhangi geniş bir bölgesi, elin tersi gibi, fakat kasti olarak temasa karşı koruma sağlamaz	Any large surface of the body, such as the back of a hand, but no protection against deliberate contact with a body part
2	Parmak veya benzer objeler	Fingers or similar objects
3	Aletler, kalın kablolar vb.	Tools, thick wires, etc.
4	Çoğu kablo, vida vb.	Most wires, screws, etc.
5	Tozun girişi tamamiyle engellenemekte fakat ekipmanın çalışmasına engel olacak kadar girişi engellemekte, Temasa karşı tam koruma	Ingress of dust is not entirely prevented, but it must not enter in sufficient quantity to interfere with the satisfactory operation of the equipment; complete protection against contact
6	Toz girişi yok; Temasa karşı tam koruma	No ingress of dust; complete protection against contact

IP	Testler	Tests
0	Korumasız	No protection
1	Damlayan suların (dik olarak düşen) hiç bir zararı yoktur.	Dripping water (vertically falling drops) shall have no harmful effect.
2	Kutu normal pozisyonundan 15 dereceye kadar döndürülse bile damlayan suların hiç bir zararı yoktur.	Vertically dripping water shall have no harmful effect when the enclosure is tilted at an angle up to 15° from its normal position.
3	Dikeyden 60 dereceye kadar püskürtme şeklinde düşen suların hiç bir zararı yoktur.	Water falling as a spray at any angle up to 60° from the vertical shall have no harmful effect.
4	Herhangi bir yönden gelen serpeme suların hiç bir zararı yoktur.	Water splashing against the enclosure from any direction shall have no harmful effect.
5	Herhangi bir yönden kutuya karşı bir ağızdan doğrultulan suların hiç bir zararı yoktur.	Water projected by a nozzle against enclosure from any direction shall have no harmful effects.
6	Herhangi bir yönden kutuya karşı güçlü fışkırtılan suların hiç bir zararı yoktur.	Water projected in powerful jets against the enclosure from any direction shall have no harmful effects.
7	Belirtilen zaman ve basınç koşullarında kutu suyun içine daldırıldığında zararlı olacak seviyedeki suyun içeri girmesi mümkün değildir.	Ingress of water in harmful quantity shall not be possible when the enclosure is immersed in water under defined conditions of pressure and time (up to 1 m of submersion).
8	Üretici tarafından belirtilen koşullar altında ekipman suyun altında devamlı kalmaya uygundur.	The equipment is suitable for continuous immersion in water under conditions which shall be specified by the manufacturer.

### 3 FAZLI BİR MOTORA DİREKT YOL VERME

### DIRECT START A 3-PHASE MOTOR



### ŞALTER KORUMALARI İÇİN KABLO SEÇİMİ CABLE SELECTION FOR SWITCH PROTECTION

### GÜÇ - AKIM - TERMİK RÖLE - SİGORTA VE PAKET ŞALTER SEÇİMİ POWER-CURRENT-THERMAL RELAY-FUSE and SELECTION OF CAM SWITCH

Nominal Kesit mm <sup>2</sup> <i>Nominal Section</i>	Nominal Akım (In) Grup 2 <i>Nominal Current</i>		Max.Akım Taşıma Kapasitesi <i>Max. Current Bearing Capacity</i>	OPAŞ Paket Şalterleri Seçimi <i>Selection of OPAS cam switches</i>
	Cu A	Al A		
0,75	6	-	12	3 x 10 A.
1	10	-	15	3 x 10 A.
1,5	10	-	18	3 x 10 A.
2,5	20	16	26	3 x 16 A.
4	25	20	34	3 x 25 A.
6	35	25	44	3 x 25 A.
10	50	35	61	3 x 40 A.
16	63	50	82	3 x 63 A.
25	80	63	108	3 x 100 A.
35	100	80	135	3 x 125 A.
50	125	100	168	3 x 160 A.
70	160	125	207	3 x 200 A.
95	200	160	250	3 x 200 A.
120	250	200	292	3 x 250 A.
150	250	200	335	3 x 315 A.
185	315	250	382	3 x 315 A.
240	400	315	453	-
300	400	315	504	-

GÜÇ POWER		AKIM CURRENT	GÜÇ FAKTÖRÜ POWER FACTOR	TERMİK RÖLE THERMAL RELAY	SİGORTA (380V.) FUSE	OPAŞ PAKET ŞALTER OPAS CAM SWITCH
kw	HP (PS)	A	Cosφ	A	A	3X6
0,06	1/12	0,22	0,74	0,16 - 0,25	2	3X6
0,09	1/8	0,32	0,74	0,25 - 0,4	2	3X6
0,12	1/6	0,44	0,75	0,4 - 0,63	2	3X6
0,18	1/4	0,61	0,75	0,4 - 0,63	2	3X6
0,25	1/3	0,78	0,76	0,63 - 1	2 - 4	3X6
0,37	1/2	1,12	0,76	1 - 1,6	4 - 6	3X6
0,55	3/4	1,47	0,80	1 - 1,6	4 - 6	3X6
0,75	1	1,95	0,80	1,6 - 2,5	6	3X6
1,1	1,5	2,85	0,81	2,5 - 4	6	3X6
1,5	2	3,8	0,82	2,5 - 4	10	3X10
2,2	3	5,4	0,82	4 - 6,3	16	3X16
3	4	6,8	0,83	6,3 - 10	16	3X16
4	5,5	8,8	0,83	6,3 - 10	20	3X25
5,5	7,5	11,7	0,85	10 - 16	25 - 32	3X25 / Y-D
7,5	10	15,6	0,85	10 - 16	32	3X40 / Y-D
11	15	22	0,86	16 - 25	40	3X63 / Y-D
15	20	29	0,86	25 - 40	50	3X63 / Y-D
18,5	25	37,5	0,83	25 - 40	63	3X63
22	30	43,5	0,83	40 - 57	80	3X100
30	40	60	0,83	50 - 63	100	3X100
37	50	73	0,84	55 - 80	100-125	3X125
45	60	88	0,84	80 - 110	125-160	3X160
55	75	104	0,86	80 - 110	160	3X200
75	100	140	0,86	120 - 150	200-250	3X200
90	125	168	0,86	-	250	3X250
110	150	198/205	0,86	-	315	3X250
132	180	230/290	0,87	-	315	3X315

Bakır bara kullanılması tavsiye edilir / Copper bar is recommended

DIN VDE göre 0100, Bölüm 430.6.81 / 5.2. Tablo:1

According to DIN VDE, 0100, Section 430.6.81 / 5.2. Table:1

(BS, ANSI CSA ve NF Standartlarına göre tablo :

9,16 / 9,17 göre A.C. Sincap kafesli motorların çektiği akımlar) (Devir sayısı : 1500 d/d = 3 faz)

According to BS, ANSI, CSA and NF, Table: According to 9,16 / 9,17, squirrel-cage motors' current draw) (Number of Rev : 1500 rpm = 3 phases)



Standartlar / Standards					TS EN 60947-3, DIN, VDE 0660, IEC 947				
Boyut / Size					B0		B1		B2
Şalter Kodu / Switch code					Tip /Type		MB/MS.....006	YPT.....010	YPT.....016
İzolasyon Gerilimi / Isolation Voltage			: Ui		V	450	450	500	
İşletme Gerilimi / Operation Voltage			: Ue		V.AC.	230 / 400	230 / 400	230 / 400	
Frekans / Frequence					Hz	50.....60	50.....60	50.....60	
Darbe Gerilimi / Stroke Voltage			: Uimp		kV	4	4	4	
Nominal Akım / Nominal Current			: Ie		A	6	10	16	
Nominal Termik Akımı / Nominal Thermal Current			: Ith (AC)		A	10	16	20	
Kısa Devre Koruma Akımı / Short circuit protection Current (gL Sigorta ile Testte Geçen Değer) (Value Tested with gL Fuse)					kA	6	6	6	
Max.Sigorta Değeri (gL) / Max. Fuse Value (gL)					A	10	16	20	
Çalışma Ömrü / Operation Life									
Mekanik / Mechanical					Çevrim Operations	1 Milyon 1M	1 Milyon 1M	750 Bin 750K	
Elektrik ..... (400V.AC.) / Electrical (400V.AC.)					Çevrim Operations	50 Bin 50K	50 Bin 50K	50 Bin 50K	
Manevra Kabiliyeti -1Saatte / Maneuvering Capability - per hour					1/h	1/3 sn/sec (1200)	1/3 sn/sec (1200)	1000	
Sıcaklık / Medium Temperature					°C	- 20' den + 60' a Kadar / from -20 to +60			
Bağlantı Vidası / Connection Screw					M2,5		M3		M4
Kablo Bağlantısı (Kesit) / Cable Connection (Section)									
Tek Damarlı ve Çok Damarlı / Single Vessel and Multi-vessel (Kablo Papuçsuz) / Without cable shoe					mm <sup>2</sup>	2x(0,75-1) 1x1,5	2x(1-1,5) 1x2,5	2x(1-2,5) 1x4	
Kablo Papuçları / Cable shoes					mm <sup>2</sup>	-	-	2,5	
Elektriki Yükleme / Electric Loading									
<b>AC23 :</b> Sincap Kafesli Motor, Direkt Kalkış Yükte Devreye Alma, Yıldız-Üçgen Şalter Squirrel Cage Motor; Direct Start, To Put into Circuit Under Load, Star-Delta Switch Motor ve Diğer Yüksek İndüktif Yüklerin Sık Aralıklarla Devreye Alınması. Putting Into Operation Frequently the Motor and the other High Inductive Loads									
Ue:230V. Ue:380/400V. Ue:500/660V. Ie:400V.Kadar.					kW kW kW	AC23 1 2,2 -	AC23 1,5 3 -	AC23 2 5 7,5	
					A	4	6,6	11,5	
<b>AC21 :</b> Az Aşırı Yükte, Rezistif Yüklerin Kumandası. At underload, resistive loads Control Kullanma Kategorisi / Usage Category Nominal Güç..... / Nominal Power Nominal Çalışma Akımı Nominal Operation Current V. Ie: Up to 400 V									
Ue:230V. Ue:380/400V. Ie:400V Kadar					kW kW	AC21 2 4,4	AC21 3 6	AC21 4 9	
					A	6	10	16	
Kullanma Sınıfı Class of Use	I/Ie	U/Ue	CosQ	Çevrim					
AC21A AC21B	1,5	1,05	0,95	5					
AC22A AC22B	3	1,05	0,95	5					
AC23A AC23B	10	1,05	0,95	5(10xIe) 3(10xIe)	A	60	100	160	
					A	-	-	-	



## TS EN 60947-3, DIN, VDE 0660, IEC 947

B2	B3				B4			
YPT.....025	YPT.032/040	YPT.....063	YPT.....100	YPT.....125	YPT.....160	NP.....200	NP.....250	NP.....315
660	660	660	660	660	660	660	660	660
230 / 400	230 / 400	230 / 400	230 / 400	230 / 400	230 / 400	230 / 400	230 / 400	230 / 400
50.....60	50.....60	50.....60	50.....60	50.....60	50.....60	50.....60	50.....60	50.....60
4	4	4	4	4	6	6	6	6
25	32/40	63	100	125	160	200	250	315
30	45	70	120	140	170	215	260	330
6	6	6	6	6	6	6	6	6
32	50	80	125	160	200	250	250	315
750 Bin 750K 50 Bin 50K	500 Bin 500K 50 Bin 50K	500 Bin 500K 50 Bin 50K	500 Bin 500K 50 Bin 50K	500 Bin 500K 50 Bin 50K	500 Bin 500K 50 Bin 50K	500 Bin 500K 50 Bin 50K	500 Bin 500K 50 Bin 50K	500 Bin 500K 50 Bin 50K
1000	2/6sn/sec(600)	2/6sn/sec(600)	2/6sn/sec(600)	2/6sn/sec(600)	2/6sn/sec(600)	2/6sn/sec(600)	2/6sn/sec(600)	2/6sn/sec(600)
- 20' den + 60' a Kadar / from -20 to +60								
M4	M5	M5	M5	M5	M8	M8	M8	M8
2x(1-4) 1x6	2x(2,5-6) 1x10	2x(4-16) 25mm Kadar / Up to 25mm	2x(6-25) 35mm Kadar / Up to 35mm	2x(6-25) 50mm Kadar / Up to 50mm	2x(10-25) 70mm Kadar / Up to 70mm	2x(10-35) 95mm Kadar / Up to 95mm	2x(16-50) 120mm Kadar / Up to 120mm	2x(95) 150mm Kadar / Up to 150mm
4	10	16	25	35	50	70	95	2x70
AC23	AC23	AC23	AC23	AC23	AC23	AC23	AC23	AC23
2,6 8 11	4,4 17 15	9 21 21	14 37 33	17 40 37	- 45 47	- 47 50	- 50 55	- 55 57
18	30	45	75	93	105	110	117	130
AC21	AC21	AC21	AC21	AC21	AC21	AC21	AC21	AC21
6 15	11 25	14 30	25 50	30 59	37 63	50 80	55 90	60 110
25	40	63	100	125	160	200	250	315
250	320/400	630	1000	-	-	-	-	-
-	-	-	-	1250	1600	2000	2500	3150



**Y P T 1 0 1 0 1 0**

## Seri Kodu / Serial Code

N: Normal  
Y: Yeni

## Model / Model

PT : Pano Modeli / Standard type  
KL : Kilitli Modeli / Padlock Type  
GT : Geniş Çerçeve Modeli / Wide Type  
ET : Etiketli Model / Labelled Type

## Kutup Sayısı / Count of Pole

1, 2, 3, 4, 5, 6, 7 Faz veya Kutuplu / Phase or Pole

## Tanıtm Numarası, Devredeki Görevi / Function in circuit

01 : Açma - Kapama, Pako / On - Off  
02 : Yıldız - Üçgen / Star Delta  
04 : Enversör / Reversing  
05 : Kutup Değiştirici / Changeover  
06 : Kutup Değiştirici+Aç-Kapa / Changeover+On-Off  
08 : Çift Devirli Tek Yönlü / 2 Speed single winding  
09 : Çift Devirli Çift Yönlü / 2 Speed Single Winding(reversing)  
10 : Kilitli Emniyet Mekanizmalı / Doorlock Safety

12 : 2 Kademeli Sıfırlı / 2 Steps with "0"  
13 : 3 Kademeli Sıfırlı / 3 Steps with "0"  
14 : 4 Kademeli Sıfırlı / 4 Steps with "0"  
15 : 5 Kademeli Sıfırlı / 5 Steps with "0"  
16 : 6 Kademeli Sıfırlı / 6 Steps with "0"  
17 : 7 Kademeli Sıfırlı / 7 Steps with "0"

22 : 2 Kademeli Sıfırsız / 2 Steps without "0"  
23 : 3 Kademeli Sıfırsız / 3 Steps without "0"  
24 : 4 Kademeli Sıfırsız / 4 Steps without "0"  
25 : 5 Kademeli Sıfırsız / 5 Steps without "0"  
26 : 6 Kademeli Sıfırsız / 6 Steps without "0"  
27 : 7 Kademeli Sıfırsız / 7 Steps without "0"  
28 : 8 Kademeli Sıfırsız / 8 Steps without "0"

32 : Yıldız - 0 - Üçgen / Star - 0 - Delta  
33 : Yıldız Üçgen Enversör / Star Delta Reversing  
44 : 0 - Start / 0 - Start  
45 : 0 - Stop / 0 - Stop  
46 : Stop - 0 - Start / Stop - 0 - Start  
47 : Start1 - 0 - Start2 / Start1 - 0 - Start2

VD : Vidalı / with screw  
AK : Aç - Kapa / with on-off  
Ç1 : Çift Devirli Enversör / 2 speed reversing  
Ç2 : Çift Yön / Double winding  
G1...G3 : Gazaltı Kademe / MIG/MAG Welding Step  
V1...V6 : Voltmetre Komutatorü / Voltmeter Selector  
A1 , A2 : Ampermetre Komutatorü / Ammeter Selector

## Anma Akımı / Amperage

(6,8,10,16,20,25,32,40,50,63,80,100,115,125,160,200,250,315)A

K   : Kademeli Komutator / Step Commutator  
Ş   : Kademeli Şebekeli / Step with aux. winding  
S   : Enversör Yardımcı Sargılı / Reversing switch with aux. winding  
Y   : Brülör Yağ Şalter / Burner Oil Switch

## Örnek / Example :

**YPT1 01 010**

**1 Faz 10 Amper Açma - Kapama Şalteri  
1 Phase 10A On-Off Switch**

## BAĞLANTI ŞEMASI CONNECTION DIAGRAM

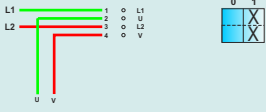
## ÖN GÖRÜNÜŞ FRONT

## ÇERÇEVE FRAME

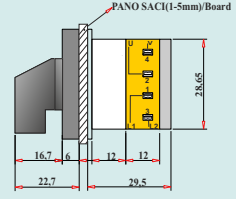
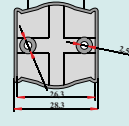
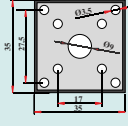
## ALT KAPAK BOTTOM

## YANDAN GÖRÜNÜŞ SIDE

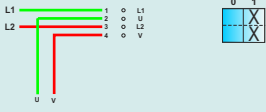
### 1.1 - MİNİK BOY (6A/8A/10A) 1 VE 2 FAZ AÇMA - KAPAMA MINI SIZE (6A/8A/10A) 1 AND 2 PHASE ON - OFF



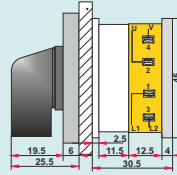
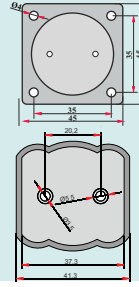
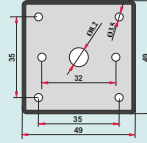
**YPM1 01 006/008/010**  
**YPM2 01 006/008/010**



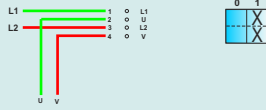
### 1.2 - KÜÇÜK BOY (10A) 1 VE 2 FAZ AÇMA - KAPAMA SMALL SIZE (10A) 1 AND 2 PHASE ON - OFF



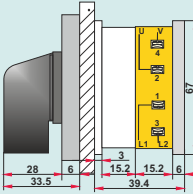
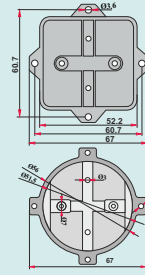
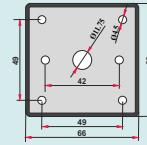
**YPT1 01 010**  
**YPT2 01 010**



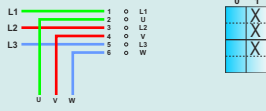
### 1.3 - ORTA BOY (16A/20A/25A/32A) 1 VE 2 FAZ AÇMA - KAPAMA MEDIUM SIZE (16A/20A/25A/32A) 1 AND 2 PHASE ON - OFF



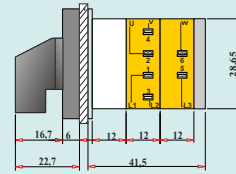
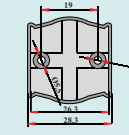
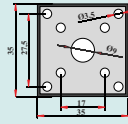
**YPT1 01 016/020/025/032**  
**YPT2 01 016/020/025/032**



### 1.4 - MİNİK BOY (6A/8A/10A) 3 FAZ AÇMA - KAPAMA MINI SIZE (6A/8A/10A) 3 PHASE ON - OFF



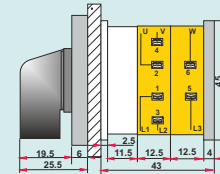
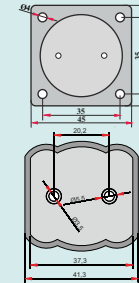
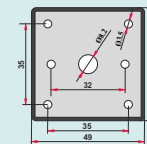
**YPM3 01 006/008/010**



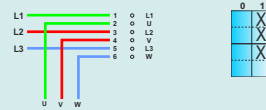
### 1.5 - KÜÇÜK BOY (10A) 3 FAZ AÇMA - KAPAMA SMALL SIZE (10A) 3 PHASE ON - OFF



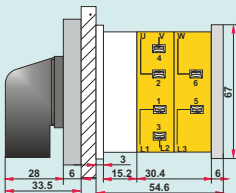
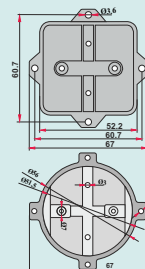
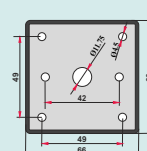
**YPT3 01 010**



### 1.6 - ORTA BOY (16A/20A/25A/32A) 3 FAZ AÇMA - KAPAMA MEDIUM SIZE (16A/20A/25A/32A) 3 PHASE ON - OFF



**YPT3 01 016/020/025/032**



## BAĞLANTI ŞEMASI CONNECTION DIAGRAM

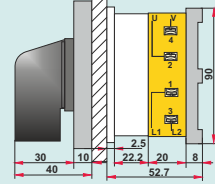
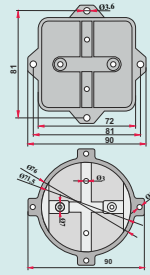
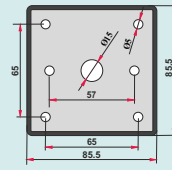
## ÖN GÖRÜNÜŞ FRONT

## ÇERÇEVE FRAME

## ALT KAPAK BOTTOM

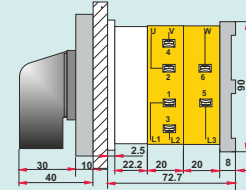
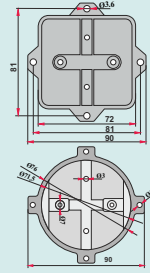
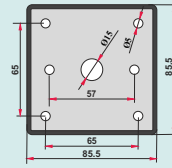
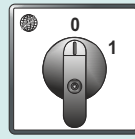
## YANDAN GÖRÜNÜŞ SIDE

### 1.7 - BÜYÜK BOY (40A/50A/63A/80A) 1 VE 2 FAZ AÇMA - KAPAMA LARGE SIZE (40A/50A/63A/80A) 1 AND 2 PHASE ON - OFF



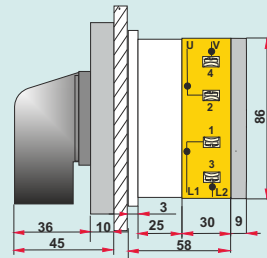
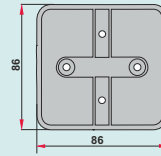
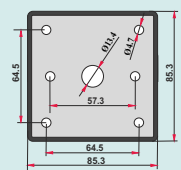
**YPT1 01 040/050/063/080**  
**YPT2 01 040/050/063/080**

### 1.8 - BÜYÜK BOY (40A/50A/63A/80A) 3 FAZ AÇMA - KAPAMA LARGE SIZE (40A/50A/63A/80A) 3 PHASE ON - OFF



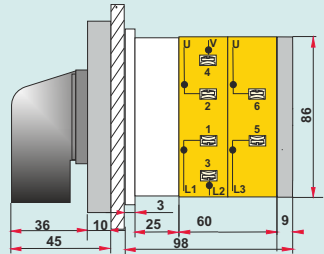
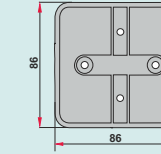
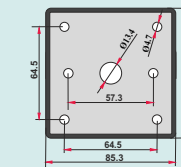
**YPT3 01 040/050/063/080**

### 1.9 - BÜYÜK KARE TİP (100A/125A/160A/200A) 1 VE 2 FAZ AÇMA - KAPAMA LARGE SQUARE TYPE (100A/125A/160A/200A) 1 AND 2 PHASE ON - OFF



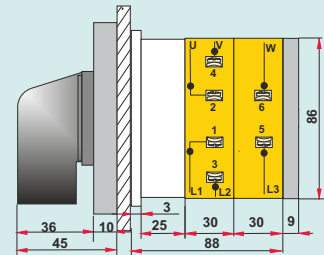
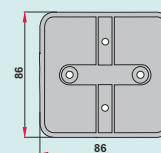
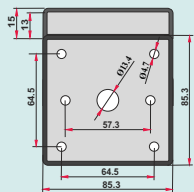
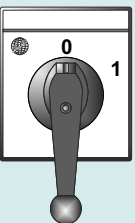
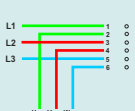
**YPT1 01 100/125/160/200**  
**YPT2 01 100/125/160/200**

### 1.10 - BÜYÜK KARE TİP (100A/125A/160A/200A) 3 FAZ AÇMA - KAPAMA LARGE SQUARE TYPE (100A/125A/160A/200A) 3 PHASE ON - OFF



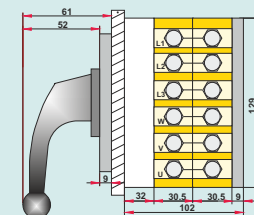
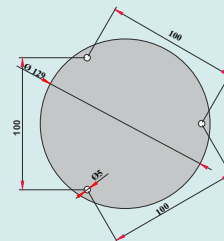
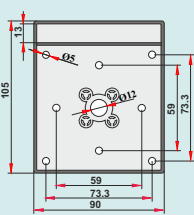
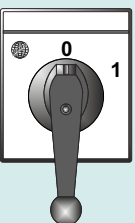
**YPT3 01 100/125/160/200**

### 1.11 - BÜYÜK KARE TİP (250A/315A) 1 VE 3 FAZ AÇMA - KAPAMA LARGE SQUARE TYPE (250A/315A) 1 AND 3 PHASE ON - OFF



**YPT1 01 250/315**  
**YPT2 01 250/315**

### 1.12 - YUVARLAK TİP (250A/315A) 1 VE 3 FAZ AÇMA - KAPAMA ROUND SIZE (250A/315A) 1 AND 3 PHASE ON - OFF



**YPT3 01 250/315**

## BAĞLANTI ŞEMASI CONNECTION DIAGRAM

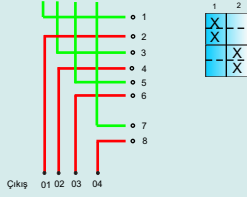
## ÖN GÖRÜNÜŞ FRONT

## ÇERÇEVE FRAME

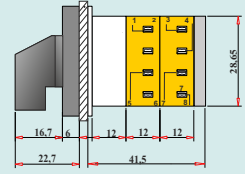
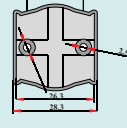
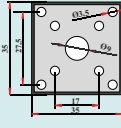
## ALT KAPAK BOTTOM

## YANDAN GÖRÜNÜŞ SIDE

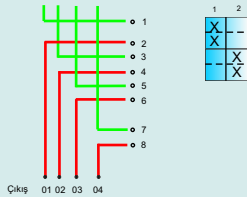
### 1.13 - MİNİK BOY (6A/8A/10A) 2 AÇ - 2 KAPA MINI SIZE (6A/8A/10A) 2 ON - 2 OFF



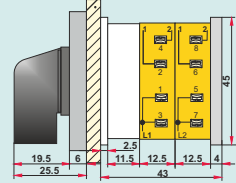
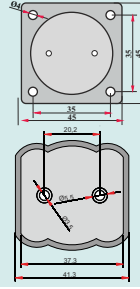
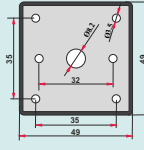
**YAK2 006/008/010**



### 1.14 - KÜÇÜK BOY (10A) 2 AÇ 2 KAPA SMALL SIZE (10A) 2 ON- 2OFF



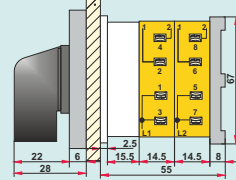
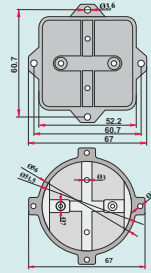
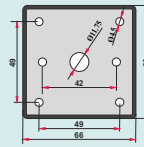
**YAK2 010**



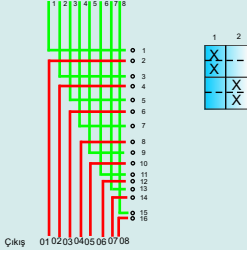
### 1.15 - ORTA BOY (16A/20A/25A/32A) 2 AÇ - 2 KAPA MEDIUM SIZE (16A/20A/25A/32A) 2 ÖN- 2 OFF



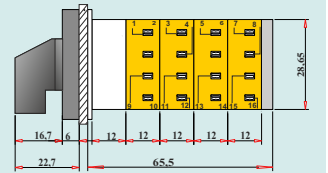
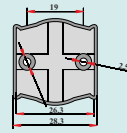
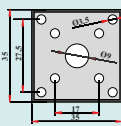
**YAK2 016/020/025/032**



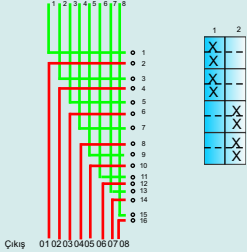
### 1.16 - MİNİK BOY (6A/8A/10A) 4 AÇ - 4 KAPA MINI SIZE (6A/8A/10A) 4 ON- 4 OFF



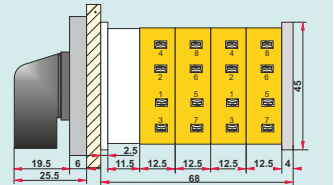
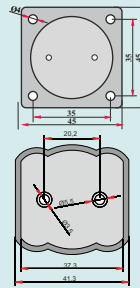
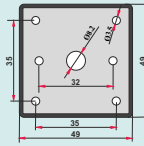
**YAK4 01 006/008/010**



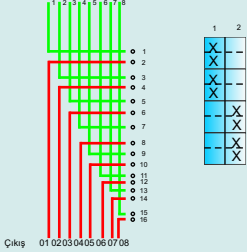
### 1.17 - KÜÇÜK BOY (10A) 4 AÇ - 4 KAPA SMALL SIZE (10A) 4 ON- 4 OFF



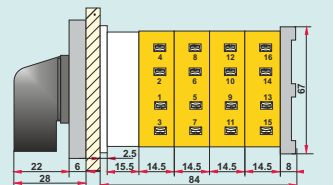
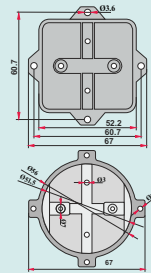
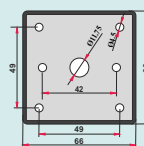
**YAK4 01 010**



### 1.18 - ORTA BOY (16A/20A/25A/32A) 4 AÇ - 4 KAPA MEDIUM SIZE (16A/20A/25A/32A) 4 ÖN- 4 OFF



**YAK4 01 016/020/025/032**





## BAĞLANTI ŞEMASI CONNECTION DIAGRAM

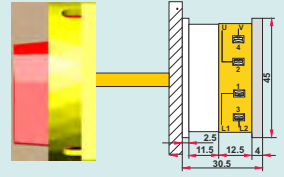
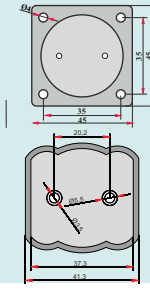
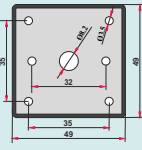
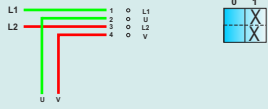
## ÖN GÖRÜNÜŞ FRONT

## ÇERÇEVE FRAME

## ALT KAPAK BOTTOM

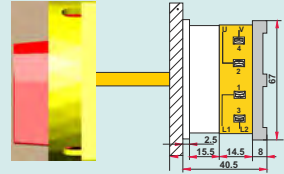
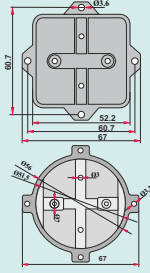
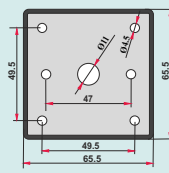
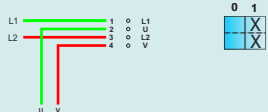
## YANDAN GÖRÜNÜŞ SIDE

### 2.1 - KÜÇÜK BOY (10A) 1 VE 2 FAZ KİLİTLİ EMNİYET MEKANİZMALI ŞALTER SMALL SIZE (10A) 1 AND 2 PHASE DOORLOCK SAFETY SWITCH



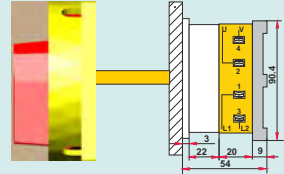
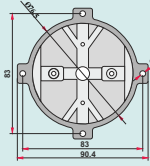
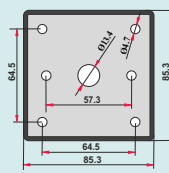
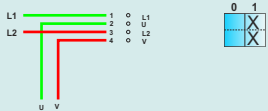
**YPT1 10 010**  
**YPT2 10 010**

### 2.2 - ORTA BOY (16A/20A/25A/32A) 1 VE 2 FAZ KİLİTLİ EMNİYET MEKANİZMALI ŞALTER MEDIUM SIZE (16A/20A/25A/32A) 1 AND 2 PHASE DOORLOCK SAFETY SWITCH



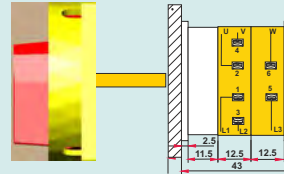
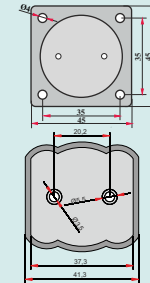
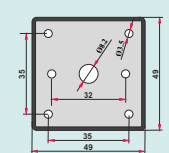
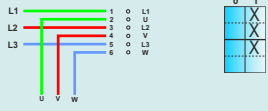
**YPT1 10 016/020/025/032**  
**YPT2 10 016/020/025/032**

### 2.3 - BÜYÜK BOY (40A/50A/63A/80A) 1 VE 2 FAZ KİLİTLİ EMNİYET MEKANİZMALI ŞALTER LARGE SIZE (40A/50A/63A/80A) 1 AND 2 PHASE DOORLOCK SAFETY SWITCH



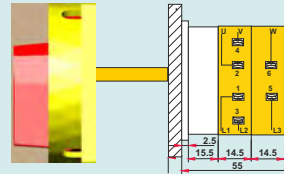
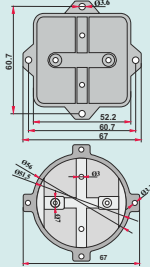
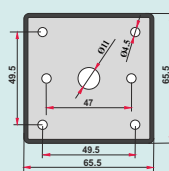
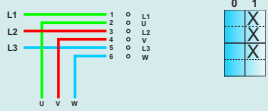
**YPT1 10 040/050/063/080**  
**YPT2 10 040/050/063/080**

### 2.4 - KÜÇÜK BOY (10A) 3 FAZ KİLİTLİ EMNİYET MEKANİZMALI ŞALTER SMALL SIZE (10A) 3 PHASE DOORLOCK SAFETY SWITCH



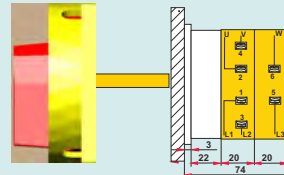
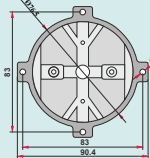
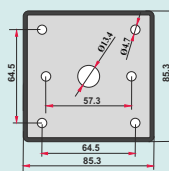
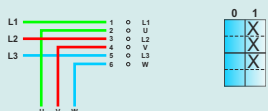
**YPT3 10 010**

### 2.5 - ORTA BOY (16A/20A/25A/32A) 3 FAZ KİLİTLİ EMNİYET MEKANİZMALI ŞALTER MEDIUM SIZE (16A/20A/25A/32A) 3 PHASE DOORLOCK SAFETY SWITCH



**YPT3 10 016/020/025/032**

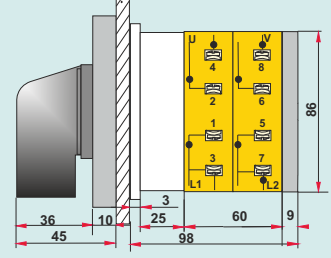
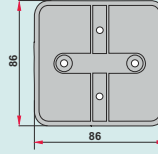
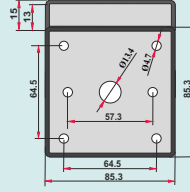
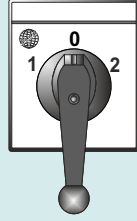
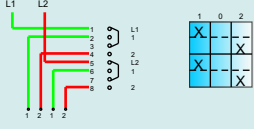
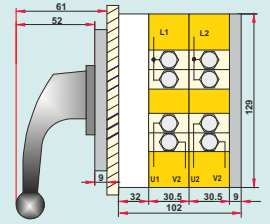
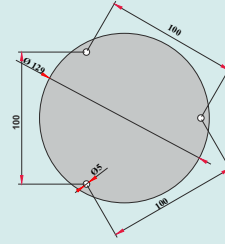
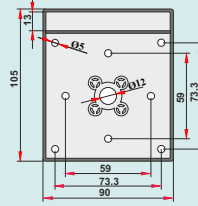
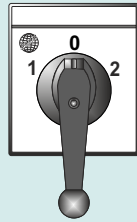
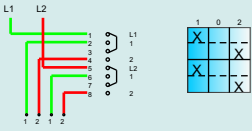
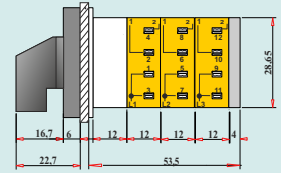
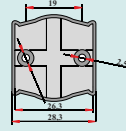
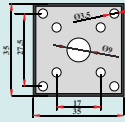
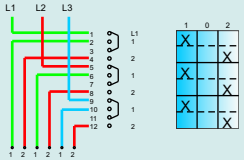
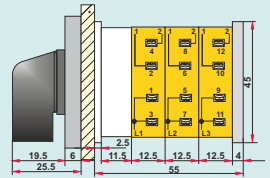
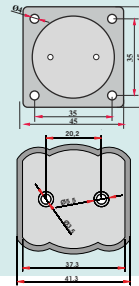
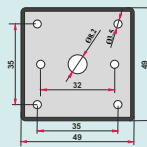
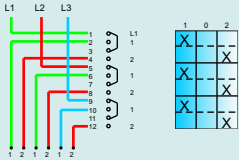
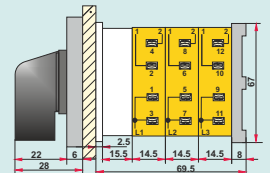
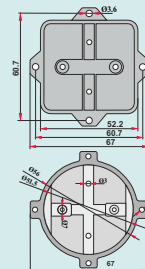
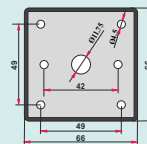
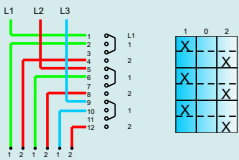
### 2.6 - BÜYÜK BOY (40A/50A/63A/80A) 3 FAZ KİLİTLİ EMNİYET MEKANİZMALI ŞALTER LARGE SIZE (40A/50A/63A/80A) 3 PHASE DOORLOCK SAFETY SWITCH



**YPT3 10 040/050/063/080**






**BAĞLANTI ŞEMASI**  
**CONNECTION DIAGRAM**
**ÖN GÖRÜNÜŞ**  
**FRONT**
**ÇERÇEVE**  
**FRAME**
**ALT KAPAK**  
**BOTTOM**
**YANDAN GÖRÜNÜŞ**  
**SIDE**
**3.13-BÜYÜK KARE TİP (250A/315A) 2 FAZ KUTUP DEĞİŞTİRİCİ**  
**LARGE SQUARE TYPE (250A/315A) 2 PHASE CHANGE-OVER**

**YPT2 05 250/315**
**3.14-YUVARLAK TİP (250A/315A) 2 FAZ KUTUP DEĞİŞTİRİCİ**  
**ROUND TYPE (250A/315A) 2 PHASE CHANGE-OVER**

**YPT2 05 250/315**
**3.15- MİNİK BOY (6A/8A/10A) 3 FAZ KUTUP DEĞİŞTİRİCİ**  
**MINI SIZE(6A/8A/10A) 3 PHASE CHANGE-OVER**

**YPM3 05 006/008/010**
**3.16- KÜÇÜK BOY (10A) 3 FAZ KUTUP DEĞİŞTİRİCİ**  
**SMALL SIZE (10A) 3 PHASE CHANGE-OVER**

**YPT3 05 010**
**3.17- ORTA BOY (16A/20A/25A/32A) 3 FAZ KUTUP DEĞİŞTİRİCİ**  
**MEDIUM SIZE (16A/20A/25A/32A) 3 PHASE CHANGE-OVER**

**YPT3 05 016/020/25/032**

**BAĞLANTI ŞEMASI**  
CONNECTION DIAGRAM

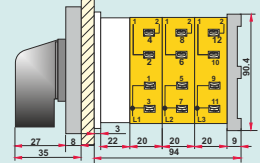
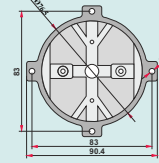
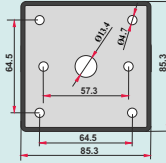
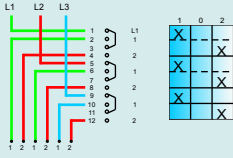
**ÖN GÖRÜNÜŞ**  
FRONT

**ÇERÇEVE**  
FRAME

**ALT KAPAK**  
BOTTOM

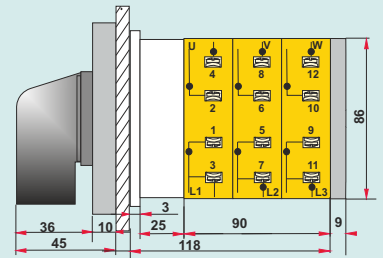
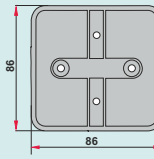
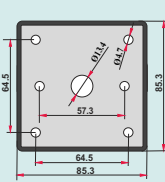
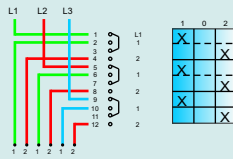
**YANDAN GÖRÜNÜŞ**  
SIDE

**3.18- BÜYÜK BOY (40A/50A/63A/80A) 3 FAZ KUTUP DEĞİŞTİRİCİ**  
LARGE SIZE (40A/50A/63A/80A) 3 PHASE CHANGE-OVER



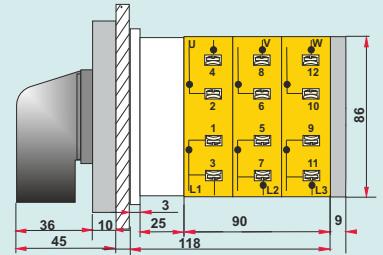
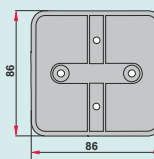
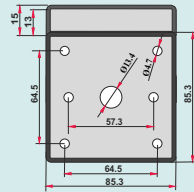
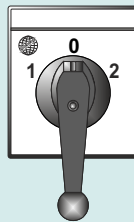
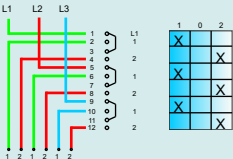
**YPT3 05 040/050/063/080**

**3.19-BÜYÜK KARE TİP (100A/125A/160A/200A) 3 FAZ KUTUP DEĞİŞTİRİCİ**  
LARGE SQUARE TYPE (100A/125A/160A/200A) 3 PHASE CHANGE-OVER



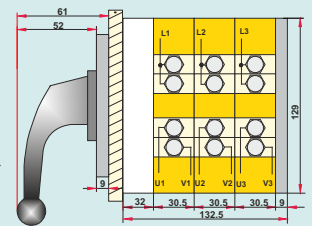
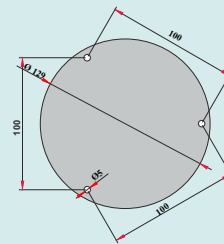
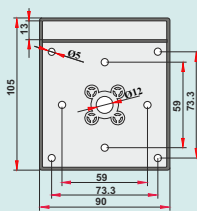
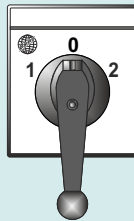
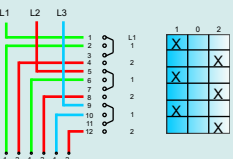
**YPT3 05 100/125/160/200**

**3.20- BÜYÜK KARE TİP (250A/315A) 3 FAZ KUTUP DEĞİŞTİRİCİ**  
LARGE SQUARE TYPE (250A/315A) 3 PHASE CHANGE-OVER



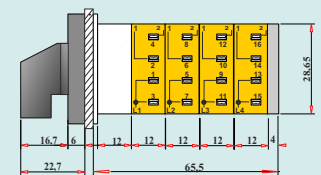
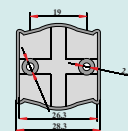
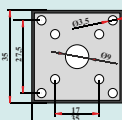
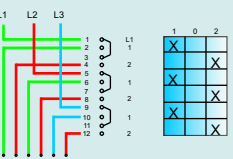
**YPT3 05 250/315**

**3.21-YUVARLAK TİP (250A/315A) 3 FAZ KUTUP DEĞİŞTİRİCİ**  
ROUND TYPE (250A/315A) 3 PHASE CHANGE-OVER

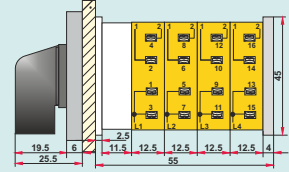
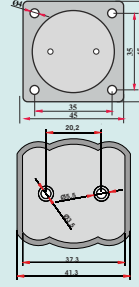
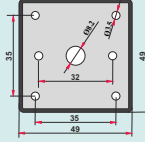
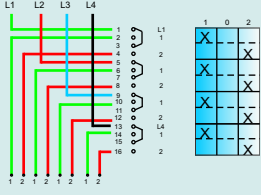


**YPT3 05 250/315**

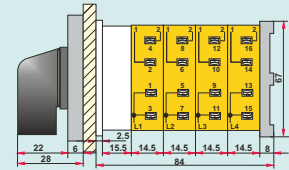
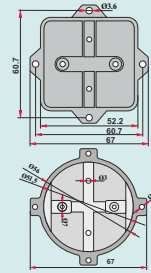
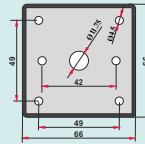
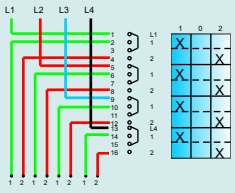
**3.22-MİNİK BOY (6A/8A/10A) 4 FAZ KUTUP DEĞİŞTİRİCİ**  
MINI SIZE (6A/8A/10A) 4 PHASE CHANGE-OVER



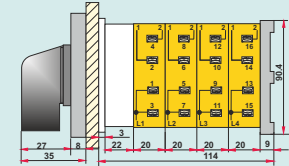
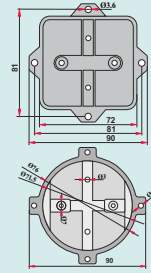
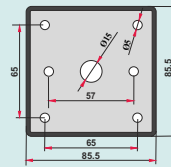
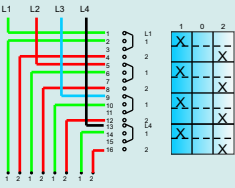
**YPM4 05 006/008/010**

BAĞLANTI ŞEMASI  
CONNECTION DIAGRAMÖN GÖRÜNÜŞ  
FRONTÇERÇEVE  
FRAMEALT KAPAK  
BOTTOMYANDAN GÖRÜNÜŞ  
SIDE3.23-KÜÇÜK BOY (10A) 4 FAZ KUTUP DEĞİŞTİRİCİ  
SMALL SIZE (10A) 4 PHASE CHANGE-OVER

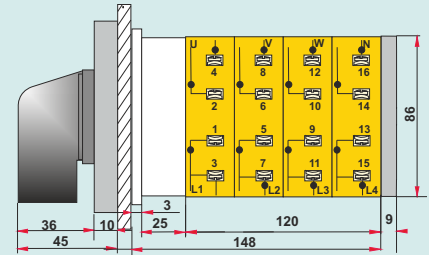
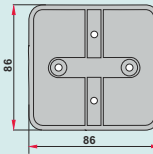
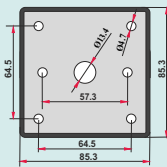
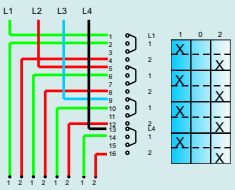
YPT4 05 010

3.24-ORTA BOY (16A/20A/25A/32A) 4 FAZ KUTUP DEĞİŞTİRİCİ  
MEDIUM SIZE (16A/20A/25A/32A) 4 PHASE CHANGE-OVER

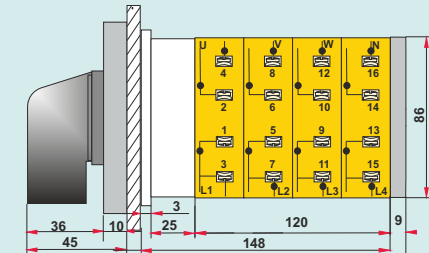
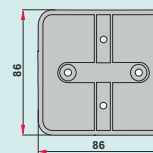
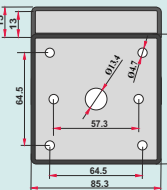
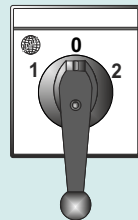
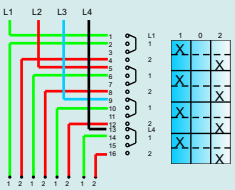
YPT4 05 016/020/025/032

3.25-BÜYÜK BOY (40A/50A/63A/80A) 4 FAZ KUTUP DEĞİŞTİRİCİ  
MEDIUM SIZE (40A/50A/63A/80A) 4 PHASE CHANGE-OVER

YPT4 05 040/050/063/080

3.26-BÜYÜK KARE TİP (100A/125A/160A/200A) 4 FAZ KUTUP DEĞİŞTİRİCİ  
LARGE SQUARE TYPE (100A/125A/160A/200A) 4 PHASE CHANGE-OVER

YPT4 05 100/125/160/200

3.27-BÜYÜK KARE TİP (250A/315A) 4 FAZ KUTUP DEĞİŞTİRİCİ  
LARGE SQUARE SIZE (250A/315A) 4 PHASE CHANGE-OVER

YPT4 05 250/315

**BAĞLANTI ŞEMASI**  
CONNECTION DIAGRAM

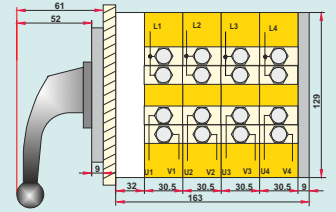
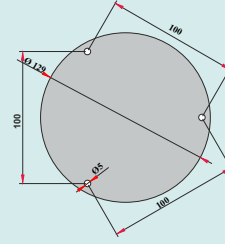
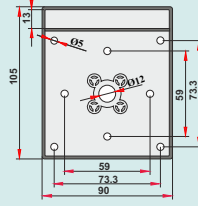
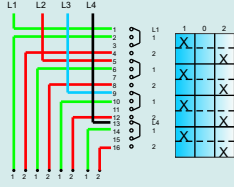
**ÖN GÖRÜNÜŞ**  
FRONT

**ÇERÇEVE**  
FRAME

**ALT KAPAK**  
BOTTOM

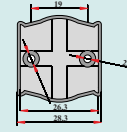
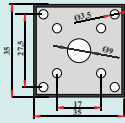
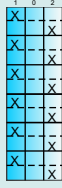
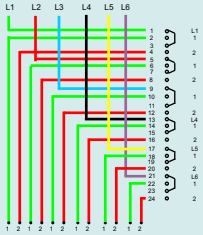
**YANDAN GÖRÜNÜŞ**  
SIDE

**3.28- YUVARLAK TİP (250A/315A) 4 FAZ KUTUP DEĞİŞTİRİCİ**  
ROUND TYPE (250A/315A) 4 PHASE CHANGE-OVER



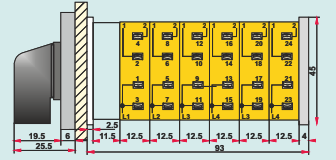
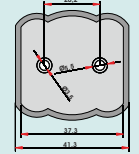
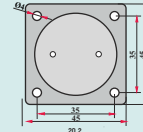
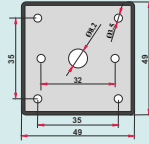
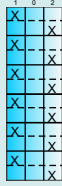
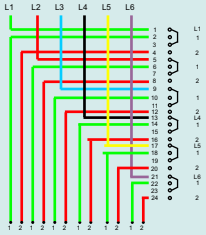
**YPT4 05 250/315**

**3.29- MİNİK BOY (6A/8A/10A) 6 FAZ KUTUP DEĞİŞTİRİCİ**  
MINI SIZE (6A/8A/10A) 6 PHASE CHANGE-OVER



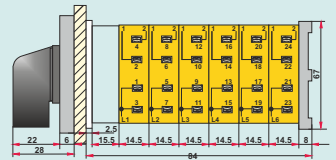
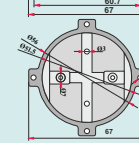
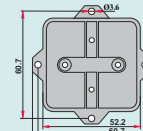
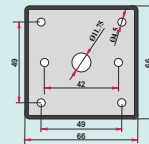
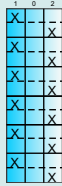
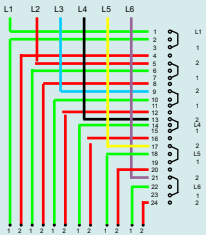
**YPM6 05 006/008/010**

**3.30- KÜÇÜK BOY (10A) 6 FAZ KUTUP DEĞİŞTİRİCİ**  
SMALL SIZE (10A) 6 PHASE CHANGE-OVER



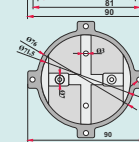
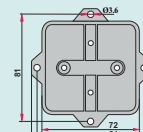
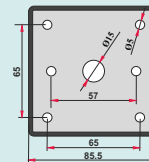
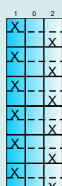
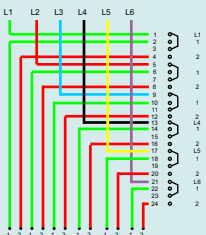
**YPT6 05 010**

**3.31- ORTA BOY (16A/20A/25A/32A) 6 FAZ KUTUP DEĞİŞTİRİCİ**  
MEDIUM SIZE (16A/20A/25A/32A) 6 PHASE CHANGE-OVER



**YPT6 05 016/020/025/032**

**3.32- BÜYÜK BOY (40A/50A/63A/80A) 6 FAZ KUTUP DEĞİŞTİRİCİ**  
MEDIUM SIZE (40A/50A/63A/80A) 6 PHASE CHANGE-OVER



**YPT6 05 040/050/063/080**





## BAĞLANTI ŞEMASI CONNECTION DIAGRAM

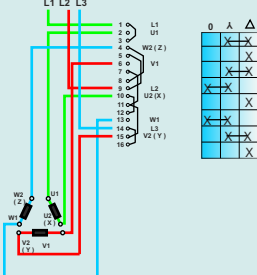
## ÖN GÖRÜNÜŞ FRONT

## ÇERÇEVE FRAME

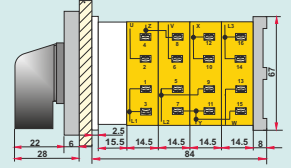
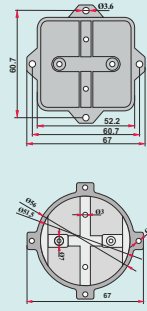
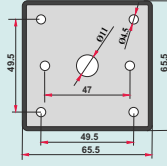
## ALT KAPAK BOTTOM

## YANDAN GÖRÜNÜŞ SIDE

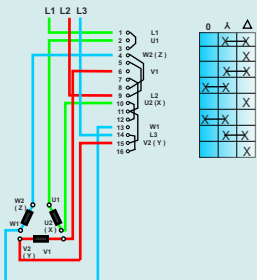
### 4.1-ORTA BOY (16A/20A/25A/32A) YILDIZ ÜÇGEN 0 / Y / D MEDIUM SIZE (16A/20A/25A/32A) STAR-DELTA 0 / S / D



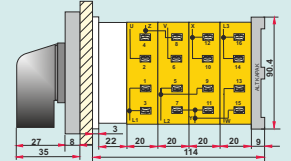
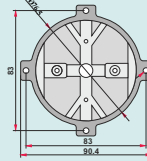
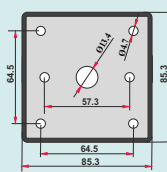
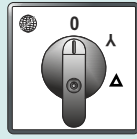
YPT3 02 016/020/025/032



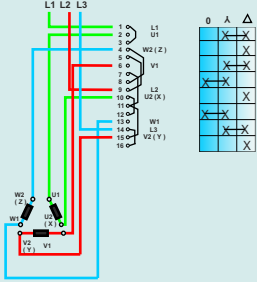
### 4.2-BÜYÜK BOY (40A/50A/63A/80A) YILDIZ ÜÇGEN 0 / Y / D LARGE SIZE (40A/50A/63A/80A) STAR-DELTA 0 / S / D



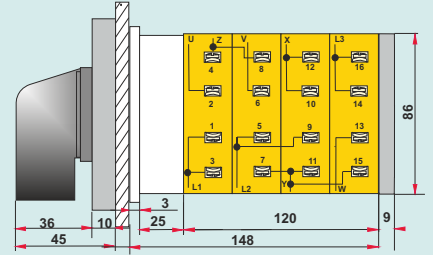
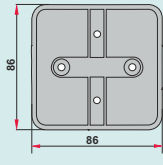
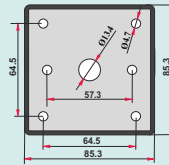
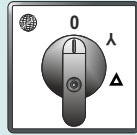
YPT3 02 040/050/063/080



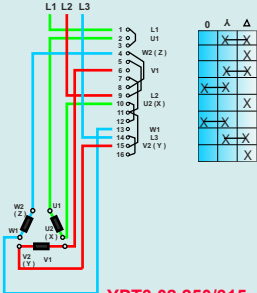
### 4.3-BÜYÜK BOY (100A/125A/160A/200A) YILDIZ ÜÇGEN 0 / Y / D LARGE SIZE (100A/125A/160A/200A) STAR-DELTA 0 / S / D



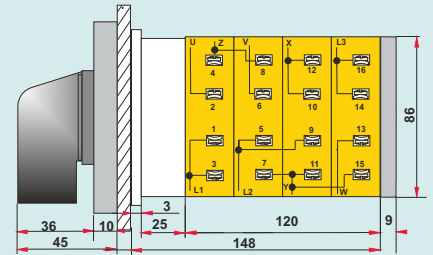
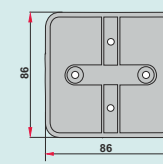
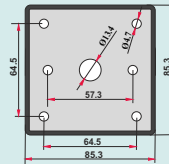
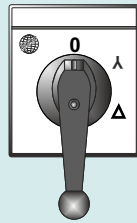
YPT3 02 100/125/160/200



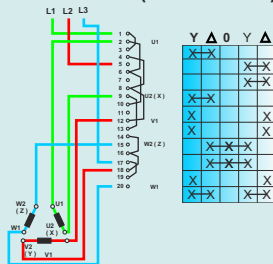
### 4.4-BÜYÜK KARE TİP (250A/315A) YILDIZ ÜÇGEN - 0 / Y / D LARGE SQUARE TYPE (250A/315A) STAR-DELTA - 0 / S / D



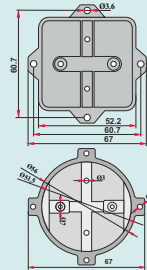
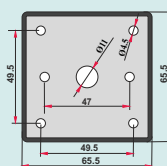
YPT3 02 250/315



### 4.5 ORTA BOY (32A/40A/50A) YILDIZ ÜÇGEN ENVERSÖRYİ Δ / 0 / Y / Δ MEDIUM SIZE (32A/40A/50A) REVERSIBLE STAR DELTA Y / Δ / 0 / Y / Δ



YPT3 34 032/040/050



BAĞLANTI ŞEMASI  
CONNECTION DIAGRAM

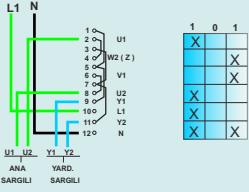
ÖN GÖRÜNÜŞ  
FRONT

ÇERÇEVE  
FRAME

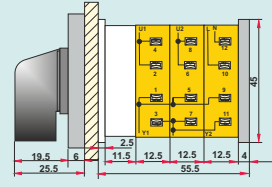
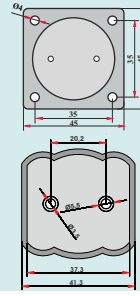
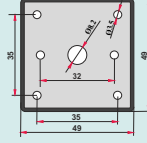
ALT KAPAK  
BOTTOM

YANDAN GÖRÜNÜŞ  
SIDE

4.6-KÜÇÜK BOY ( 10A ) MONOFAZE ENVERSÖR YARDIMCI SARGILI  
SMALL SIZE ( 10A ) SINGLE-PHASE REVERSING SWITCH WITH AUXILIARY WINDING

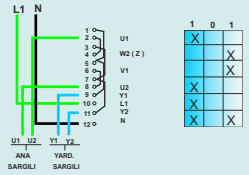


1	0	1
X		X
X		X
X		X
X		X
X		X

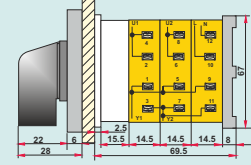
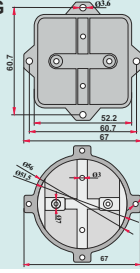
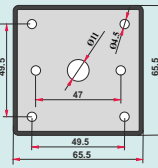


YPT1 04 010

4.7- ORTA BOY ( 16A/20A/25A/32A ) MONOFAZE ENVERSÖR YARDIMCI SARGILI  
MEDIUM SIZE ( 16A/20A/25A/32A ) SINGLE-PHASE REVERSING SWITCH WITH AUXILIARY WINDING

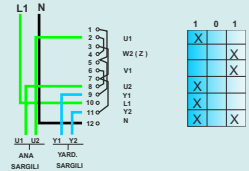


1	0	1
X		X
X		X
X		X
X		X
X		X

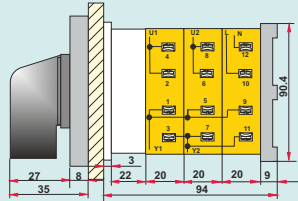
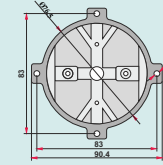
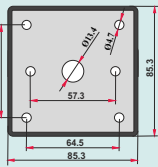
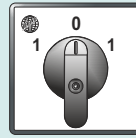


YPT1 04 016/020/025/032

4.8 BÜYÜK BOY ( 40A/50A/63A/80A ) MONOFAZE ENVERSÖR YARDIMCI SARGILI  
LARGE SIZE ( 40A/50A/63A/80A ) SINGLE-PHASE REVERSING SWITCH WITH AUXILIARY WINDING

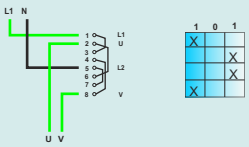


1	0	1
X		X
X		X
X		X
X		X
X		X

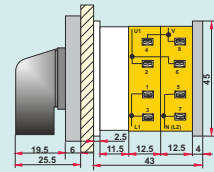
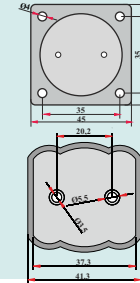
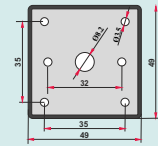


YPT1 04 040/050/063/080

4.9 KÜÇÜK BOY ( 10A ) 1 FAZLI ENVERSÖR ŞALTER  
SMALL SIZE ( 10A ) 1 PHASE REVERSING SWITCH

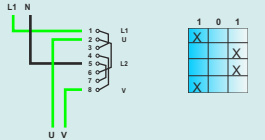


1	0	1
X		X
X		X
X		X

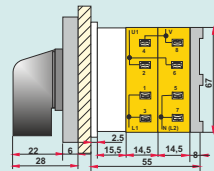
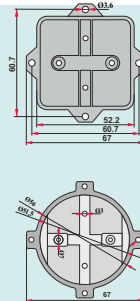
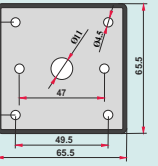


YPT1 04 010

4.10 ORTA BOY ( 16A/20A/25A/32A ) 1 FAZLI ENVERSÖR ŞALTER  
MEDIUM SIZE ( 16A/20A/25A/32A ) 1 PHASE REVERSING SWITCH

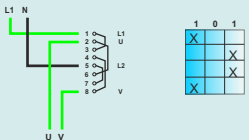


1	0	1
X		X
X		X
X		X

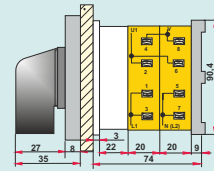
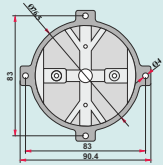
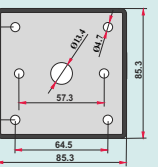


YPT1 04 016/020/025/032

4.11- BÜYÜK BOY ( 40A/50A/63A/80A ) 1 FAZLI ENVERSÖR ŞALTER  
LARGE SIZE ( 40A/50A/63A/80A ) 1 PHASE REVERSING SWITCH



1	0	1
X		X
X		X
X		X



YPT1 04 040/050/063/080

## BAĞLANTI ŞEMASI CONNECTION DIAGRAM

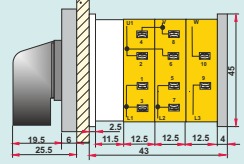
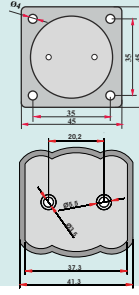
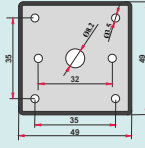
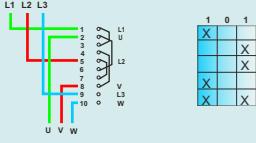
## ÖN GÖRÜNÜŞ FRONT

## ÇERÇEVE FRAME

## ALT KAPAK BOTTOM

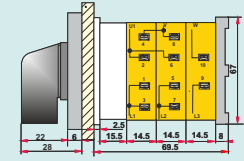
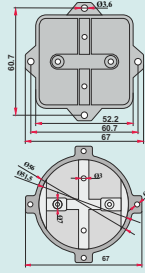
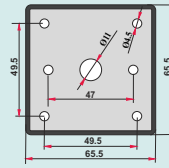
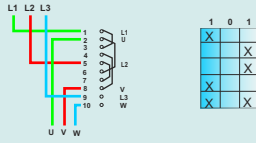
## YANDAN GÖRÜNÜŞ SIDE

### 4.12 KÜÇÜK BOY ( 10 A ) 3 FAZLI ENVERSÖR ŞALTER SMALL SIZE ( 10A ) 3 PHASE REVERSING SWITCH



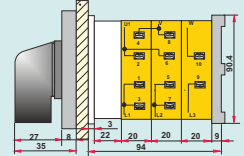
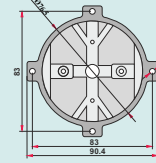
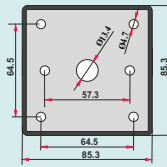
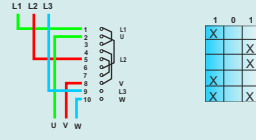
YPT3 04 010

### 4.13 ORTA BOY ( 16A/20A/25A/32A ) 3 FAZLI ENVERSÖR ŞALTER MEDIUM SIZE ( 16A/20A/25A/32A ) 3 PHASE REVERSING SWITCH



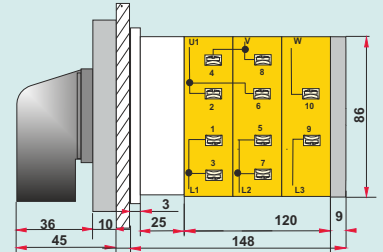
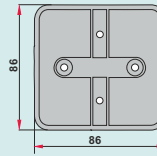
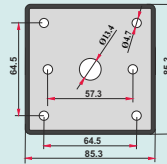
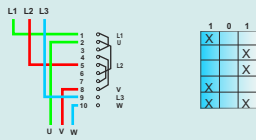
YPT3 04 016/020/025/032

### 4.14- BÜYÜK BOY ( 40A/50A/63A/80A ) 3 FAZLI ENVERSÖR ŞALTER LARGE SIZE ( 40A/50A/63A/80A ) 3 PHASE REVERSING SWITCH



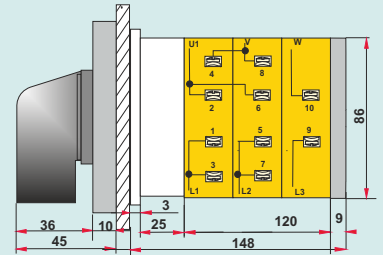
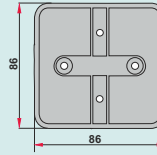
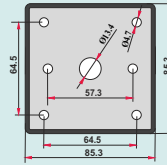
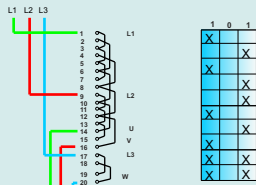
YPT3 04 040/050/063/080

### 4.15- BÜYÜK KARE TİP (100A/125A/160A/200A ) 3 FAZLI ENVERSÖR ŞALTER LARGE SQUARE TYPE (100A/125A/160A/200A ) 3 PHASE REVERSING SWITCH



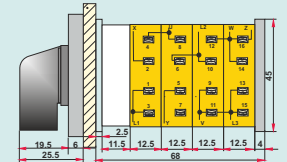
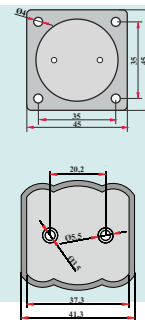
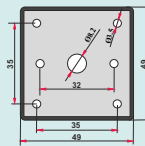
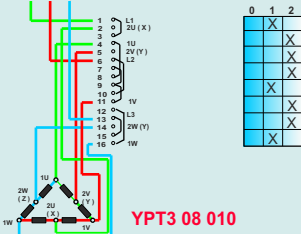
YPT3 04 100/125/160/200

### 4.16-BÜYÜK KARE TİP (250A/315A ) 3 FAZLI ENVERSÖR ŞALTER LARGE SQUARE TYPE (250A/315A ) 3 PHASE REVERSING SWITCH



YPT3 04 250/315

### 4.17- KÜÇÜK BOY (10A) ÇİFT DEVİRLİ (DAHLANDER) ŞALTER SMALL SIZE (10A) DOUBLE SPEED SWITCH



YPT3 08 010



BAĞLANTI ŞEMASI  
CONNECTION DIAGRAM

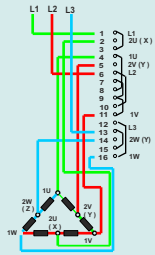
ÖN GÖRÜNÜŞ  
FRONT

ÇERÇEVE  
FRAME

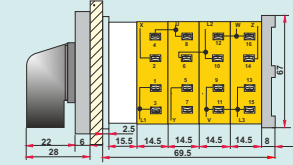
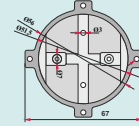
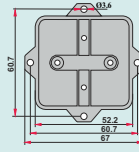
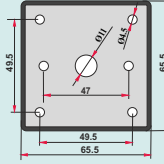
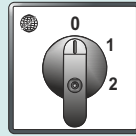
ALT KAPAK  
BOTTOM

YANDAN GÖRÜNÜŞ  
SIDE

## 4.18- ORTA BOY (16A/20A/25A/32A) ÇİFT DEVİRLİ(DAHLANDER) ŞALTER MEDIUM SIZE (16A/20A/25A/32A) DOUBLE SPEED SWITCH

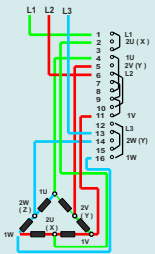


	0	1	2
1	X		
2		X	
3			X
4		X	
5	X		
6		X	
7			X
8		X	
9	X		
10		X	
11			X
12		X	
13	X		
14		X	
15			X
16		X	
17	X		
18		X	
19			X
20		X	
21	X		
22		X	
23			X
24		X	
25	X		
26		X	
27			X
28		X	
29	X		
30		X	
31			X
32		X	

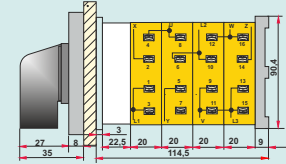
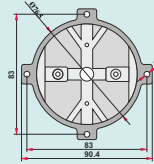
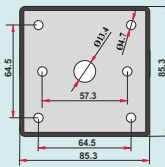


YPT3 08 016/020/025/032

## 4.19- BÜYÜK BOY (40A/50A/63A/80A) ÇİFT DEVİRLİ (DAHLANDER) ŞALTER LARGE SIZE (40A/50A/63A/80A) DOUBLE SPEED SWITCH

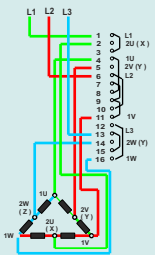


	0	1	2
1	X		
2		X	
3			X
4		X	
5	X		
6		X	
7			X
8		X	
9	X		
10		X	
11			X
12		X	
13	X		
14		X	
15			X
16		X	
17	X		
18		X	
19			X
20		X	
21	X		
22		X	
23			X
24		X	
25	X		
26		X	
27			X
28		X	
29	X		
30		X	
31			X
32		X	

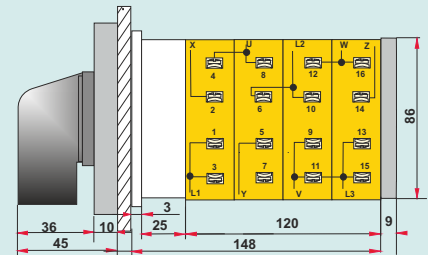
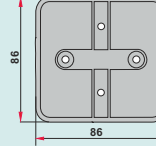
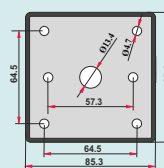


YPT3 08 040/050/063/080

## 4.20- BÜYÜK KARE TİP (100A/125A/160A/200A) ÇİFT DEVİRLİ (DAHLANDER) ŞALTER LARGE SQUARE TYPE (100A/125A/160A/200A) DOUBLE SPEED SWITCH

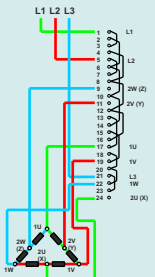


	0	1	2
1	X		
2		X	
3			X
4		X	
5	X		
6		X	
7			X
8		X	
9	X		
10		X	
11			X
12		X	
13	X		
14		X	
15			X
16		X	
17	X		
18		X	
19			X
20		X	
21	X		
22		X	
23			X
24		X	
25	X		
26		X	
27			X
28		X	
29	X		
30		X	
31			X
32		X	

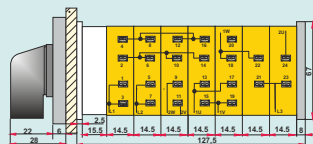
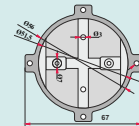
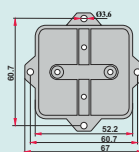
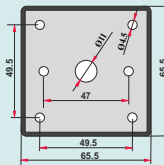


YPT3 08 100/125/160/200

## 4.21- ORTA BOY (16A/20A/25A/32A) ÇİFT DEVİRLİ ÇİFT YÖN ŞALTER (2-1-0-1-2) MEDIUM SIZE (16A/20A/25A/32A) DOUBLE SPEED DOUBLE WINDING SWITCH (2-1-0-1-2)



	2	1	0	1	2
1	X				
2		X			
3			X		
4		X			
5	X				
6		X			
7			X		
8		X			
9	X				
10		X			
11			X		
12		X			
13	X				
14		X			
15			X		
16		X			
17	X				
18		X			
19			X		
20		X			
21	X				
22		X			
23			X		
24		X			
25	X				
26		X			
27			X		
28		X			
29	X				
30		X			
31			X		
32		X			



YPT3 Ç1 016/020/025/032

MOTOR KUMANDA ŞALTERLERİ  
MOTOR CONTROL SWITCHES

## BAĞLANTI ŞEMASI CONNECTION DIAGRAM

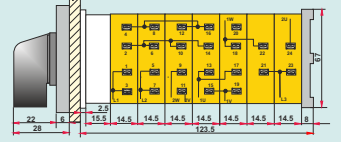
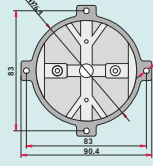
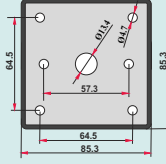
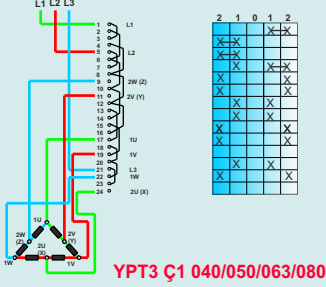
## ÖN GÖRÜNÜŞ FRONT

## ÇERÇEVE FRAME

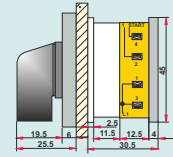
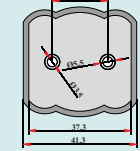
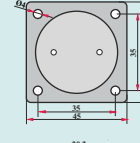
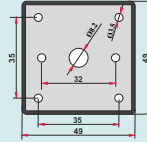
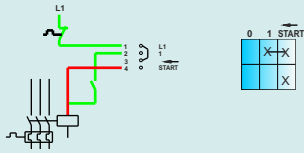
## ALT KAPAK BOTTOM

## YANDAN GÖRÜNÜŞ SIDE

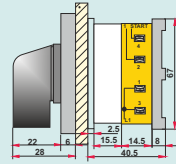
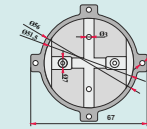
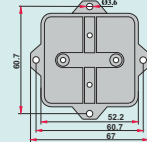
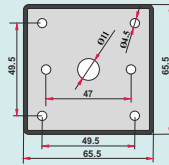
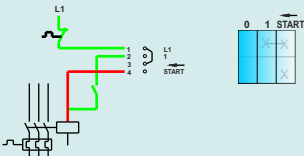
### 4.22- BÜYÜK BOY (40A/50A/63A/80A) ÇİFT DEVİRLİ ÇİFT YÖNLÜ ŞALTER (2-1-0-1-2) LARGE SIZE (40A/50A/63A/80A) DOUBLE SPEED DOUBLE WINDING SWITCH (2-1-0-1-2)



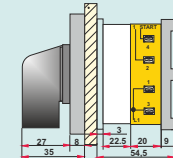
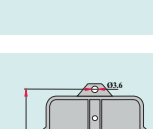
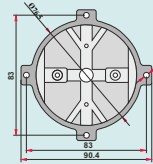
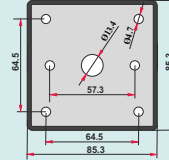
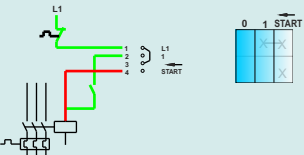
### 4.23- KÜÇÜK BOY (10A) 1 FAZ 0-1/START ŞALTER SMALL SIZE (10A) 1 PHASE 0-1/START SWITCH



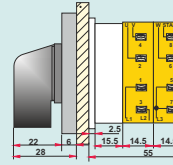
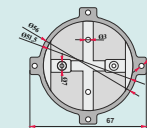
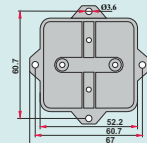
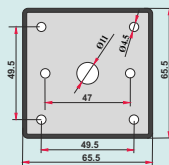
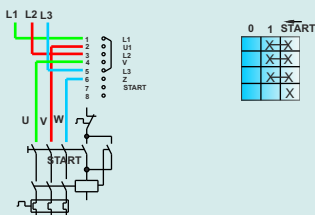
### 4.24- ORTA BOY (16A/20A/25A/32A) 1 FAZ 0-1/START ŞALTER MEDIUM SIZE (16A/20A/25A/32A) 1 PHASE 0-1/START SWITCH



### 4.25- BÜYÜK BOY (40A/50A/63A/80A) 1 FAZ 0-1/START ŞALTER LARGE SIZE (40A/50A/63A/80A) 1 PHASE 0-1/START SWITCH



### 4.26- ORTA BOY (16A/20A/25A/32A) 3 FAZ 0-1/STARTLI ŞALTER MEDIUM SIZE (16A/20A/25A/32A) 3 PHASE 0-1/START SWITCH



BAĞLANTI ŞEMASI  
CONNECTION DIAGRAM

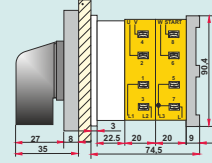
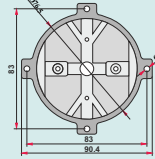
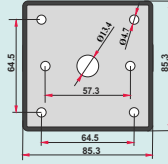
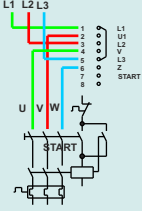
ÖN GÖRÜNÜŞ  
FRONT

ÇERÇEVE  
FRAME

ALT KAPAK  
BOTTOM

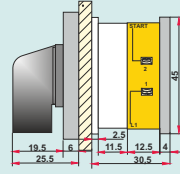
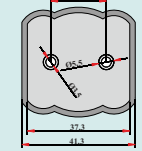
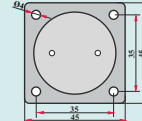
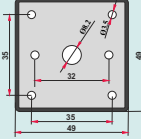
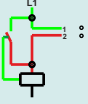
YANDAN GÖRÜNÜŞ  
SIDE

4.27- BÜYÜK BOY (40A/50A/63A/80A) 3 FAZ 0-1/STARTLI ŞALTER  
LARGE SIZE (40A/50A/63A/80A) 3 PHASE 0-1/START SWITCH



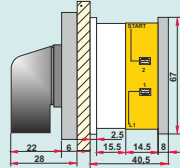
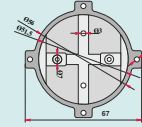
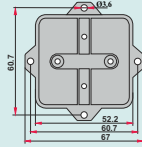
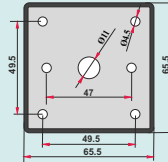
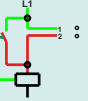
YPT3 S1 040/050/063/080

4.28- KÜÇÜK BOY (10A) 1 FAZ 0-START ŞALTER  
SMALL SIZE (10A) 1 PHASE 0-START SWITCH



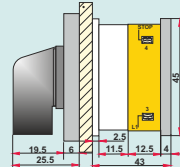
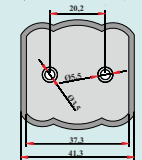
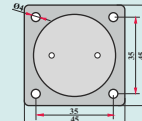
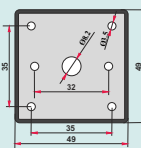
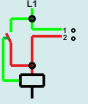
YPT1 44 010

4.29- ORTA BOY (16A/20A/25A/32A) 1 FAZ 0-START ŞALTER  
MEDIUM SIZE (16A/20A/25A/32A) 1 PHASE 0-START SWITCH



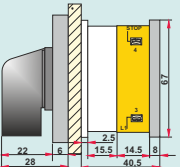
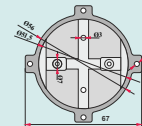
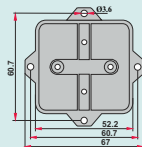
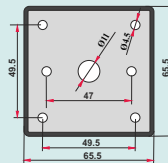
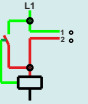
YPT1 44 016/020/025/032

4.30- KÜÇÜK BOY (10A) 1 FAZ STOP - 0 ŞALTER  
SMALL SIZE (10A) 1 FAZ STOP - 0 SWITCH



YPT1 45 010

4.31- ORTA BOY (16A/20A/25A/32A) 1 FAZ STOP - 0 ŞALTER  
MEDIUM SIZE (16A/20A/25A/32A) 1 PHASE STOP - 0 SWITCH



YPT1 45 016/020/025/032

**BAĞLANTI ŞEMASI**  
CONNECTION DIAGRAM

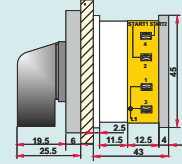
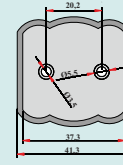
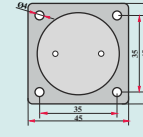
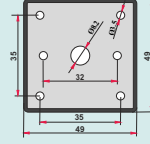
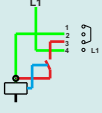
**ÖN GÖRÜNÜŞ**  
FRONT

**ÇERÇEVE**  
FRAME

**ALT KAPAK**  
BOTTOM

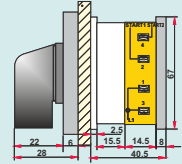
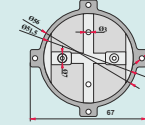
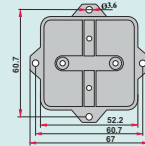
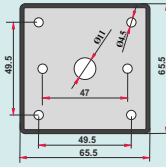
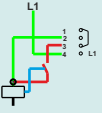
**YANDAN GÖRÜNÜŞ**  
SIDE

**4.32 - KÜÇÜK BOY (10A) 1 FAZ STOP - 0 - START ŞALTER**  
SMALL SIZE (10A) 1 PHASE STOP - 0 - START SWITCH



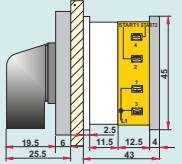
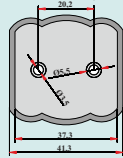
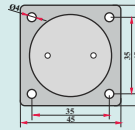
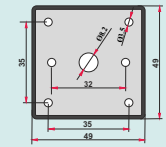
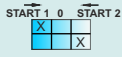
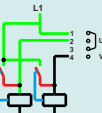
YPT1 46 010

**4.33 - ORTA BOY (16A/20A/25A/32A) 1 FAZ STOP - 0 - START ŞALTER**  
MEDIUM SIZE (16A/20A/25A/32A) 1 PHASE STOP - 0 - START SWITCH



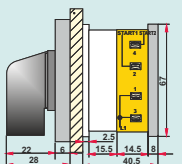
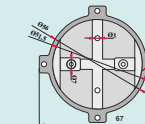
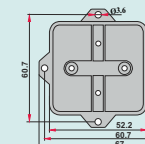
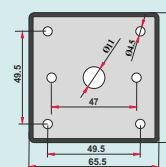
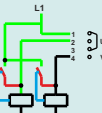
YPT1 46 016/020/025/032

**4.34 - KÜÇÜK BOY (10A) 1 FAZ START 1-0-START2 ŞALTER**  
SMALL SIZE (10A) 1 PHASE START 1-0-START 2 SWITCH



YPT1 47 010

**4.35 - ORTA BOY (16A/20A/25A/32A) 1 FAZ START 1-0-START2 ŞALTER**  
MEDIUM SIZE (16A/20A/25A/32A) 1 PHASE START 1-0-START 2 SWITCH



YPT1 47 016/020/025/032

BAĞLANTI ŞEMASI  
CONNECTION DIAGRAM

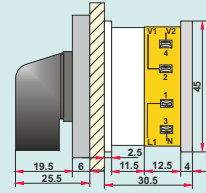
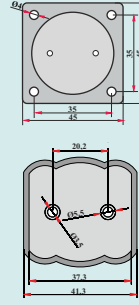
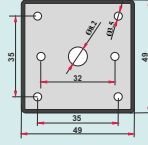
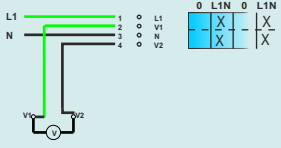
ÖN GÖRÜNÜŞ  
FRONT

ÇERÇEVE  
FRAME

ALT KAPAK  
BOTTOM

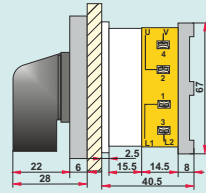
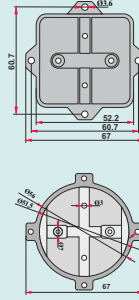
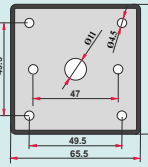
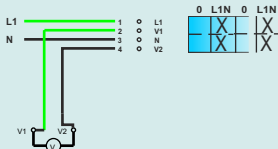
YANDAN GÖRÜNÜŞ  
SIDE

5.1-KÜÇÜK BOY (10A) 1 FAZ (0-L) VOLT METRE KOMUTATÖRÜ  
SMALL SIZE (10A) 1 PHASE (0-L) VOLTMETER SELECTOR



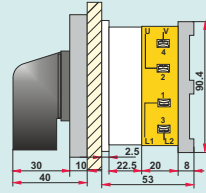
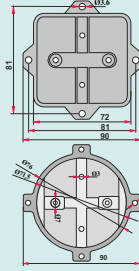
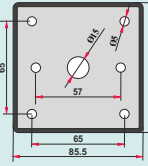
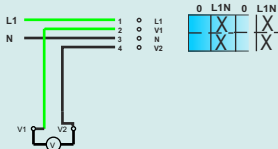
YPT1 V1 010

5.2- ORTA BOY (16A/20A/25A/32A) 1 FAZ (0-L) VOLT METRE KOMUTATÖRÜ  
MEDIUM SIZE (16A/20A/25A/32A) 1 PHASE (0-L) VOLTMETER SELECTOR



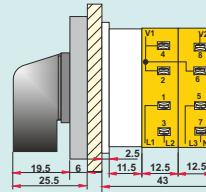
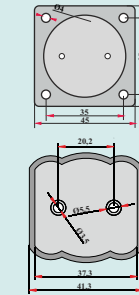
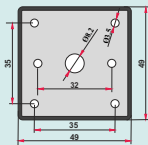
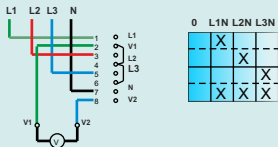
YPT1 V1 016/020/025/032

5.3- BÜYÜK BOY (40A/50A/63A/80A) 1 FAZ (0-L) VOLT METRE KOMUTATÖRÜ  
LARGE SIZE (40A/50A/63A/80A) 1 PHASE (0-L) VOLTMETER SELECTOR



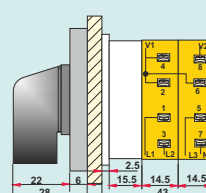
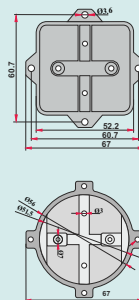
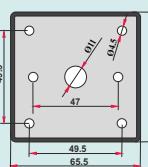
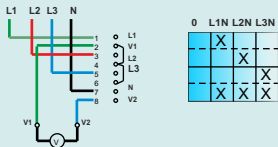
YPT1 V1 040/050/063/080

5.4-KÜÇÜK BOY (10A) 3 FAZ/NÖTR(0-LN) VOLT METRE KOMUTATÖRÜ  
SMALL SIZE (10A) 3 PHASE/NEUTRAL(0-LN) VOLTMETER SELECTOR



YPT3 V2 010

5.5-ORTA BOY (16A/20A/25A/32A) 3 FAZ/NÖTR(0-LN) VOLT METRE KOMUTATÖRÜ  
MEDIUM SIZE (16A/20A/25A/32A) 3 PHASE/NEUTRAL(0-LN) VOLTMETER SELECTOR



YPT3 V2 016/020/025/032



## BAĞLANTI ŞEMASI CONNECTION DIAGRAM

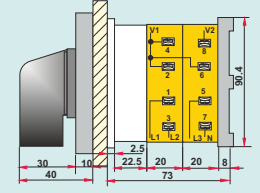
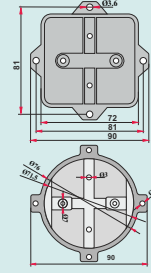
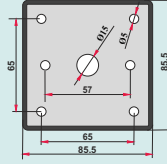
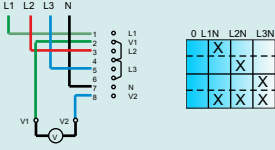
## ÖN GÖRÜNÜŞ FRONT

## ÇERÇEVE FRAME

## ALT KAPAK BOTTOM

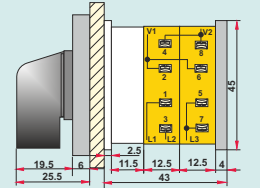
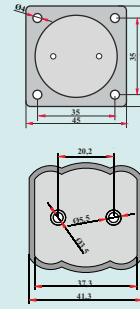
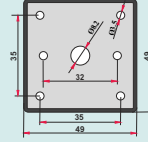
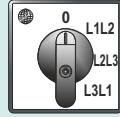
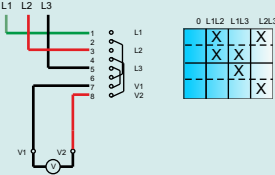
## YANDAN GÖRÜNÜŞ SIDE

### 5.6-BÜYÜK BOY (40A/50A/63A/80A) 3 FAZ/NÖTR(0-LN) VOLT METRE KOMUTATÖRÜ LARGE SIZE (40A/50A/63A/80A) 3 PHASE/NÖTR(0-LN) VOLTMETER SELECTOR



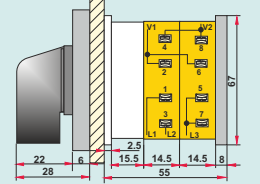
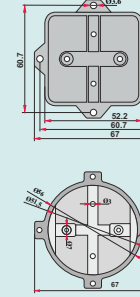
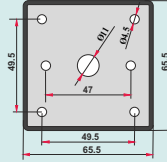
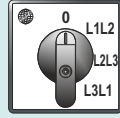
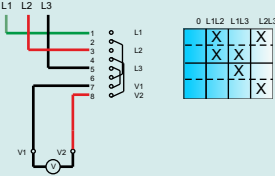
YPT3 V2 040/050/063/080

### 5.7-KÜÇÜK BOY (10A) 3 FAZ SIFIRLI (0-LL) VOLT METRE KOMUTATÖRÜ SMALL SIZE (10A) 3 PHASE WITH ZERO (0-LL) VOLTMETER SELECTOR



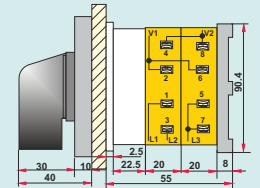
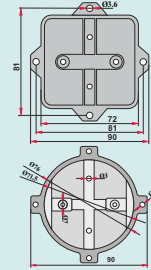
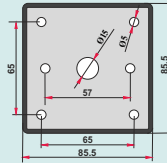
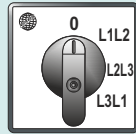
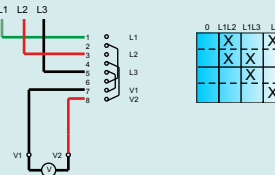
YPT3 V4 010

### 5.8-ORTA BOY (16A/20A/25A/32A) 3 FAZ SIFIRLI (0-LL) VOLT METRE KOMUTATÖRÜ MEDIUM SIZE (16A/20A/25A/32A) 3 PHASE WITH ZERO (0-LL) VOLTMETER SELECTOR



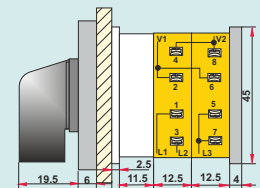
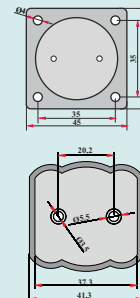
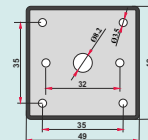
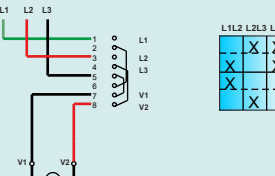
YPT3 V4 016/020/025/032

### 5.9-ORTA BOY (40A/50A/63A/80A) 3 FAZ SIFIRLI (0-LL) VOLT METRE KOMUTATÖRÜ MEDIUM SIZE (40A/50A/63A/80A) 3 PHASE WITH ZERO (0-LL) VOLTMETER SELECTOR



YPT3 V4 040/050/063/080

### 5.10-KÜÇÜK BOY (10A) 3 FAZ SIFIRSIZ (LL-LL) VOLT METRE KOMUTATÖRÜ SMALL SIZE (10A) 3 PHASE WITHOUT ZERO (LL-LL) VOLTMETER SELECTOR



YPT3 V3 010

BAĞLANTI ŞEMASI  
CONNECTION DIAGRAM

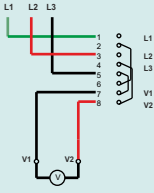
ÖN GÖRÜNÜŞ  
FRONT

ÇERÇEVE  
FRAME

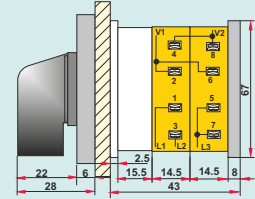
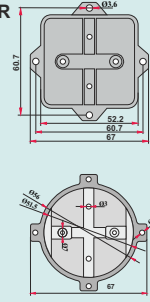
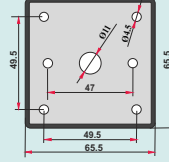
ALT KAPAK  
BOTTOM

YANDAN GÖRÜNÜŞ  
SIDE

5.11-ORTA BOY (16A/20A/25A/32A) 3 FAZ SIFIRSIZ (LL-LL) VOLT METRE KOMÜTATÖRÜ  
MEDIUM SIZE (16A/20A/25A/32A) 3 PHASE WITHOUT ZERO (LL-LL) VOLTMETER SELECTOR

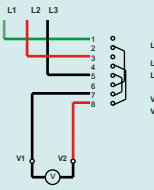


L1L2	L2L3	L1L3
X	X	X
X	X	X
X	X	X

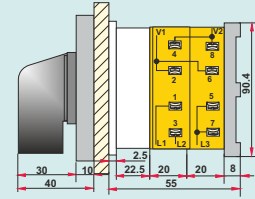
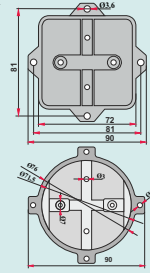
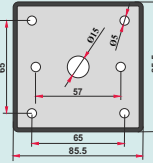


YPT3 V3 016/020/025/032

5.12-BÜYÜK BOY (40A/50A/63A/80A) 3 FAZ SIFIRSIZ (LL-LL) VOLT METRE KOMÜTATÖRÜ  
LARGE SIZE (40A/50A/63A/80A) 3 PHASE WITHOUT ZERO (LL-LL) VOLTMETER SELECTOR

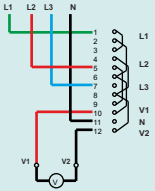


L1L2	L2L3	L1L3
X	X	X
X	X	X
X	X	X

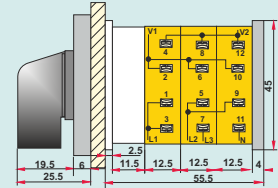
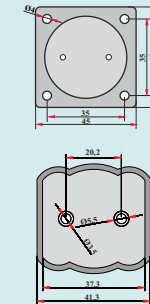
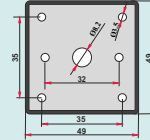


YPT3 V3 040/050/063/080

5.13-KÜÇÜK BOY (10A) 3FAZ,4 POZ (LN-LL) VOLT METRE KOMÜTATÖRÜ  
SMALL SIZE (10A) 3PHASE,4 POSITION (LN-LL) VOLTMETER SELECTOR

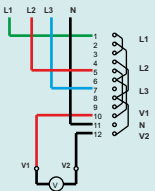


L1N	L1L2	L2L3	L1L3
X	X	X	X
X	X	X	X
X	X	X	X

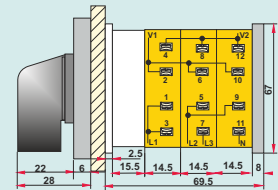
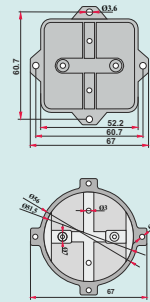
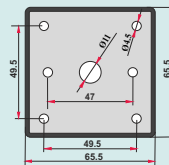


YPT4 V5 010

5.14-ORTA BOY (16A/20A/25A/32A) 3FAZ,4 POZ (LN-LL) VOLT METRE KOMÜTATÖRÜ  
MEDIUM SIZE (16A/20A/25A/32A) 3PHASE,4 POSITION (LN-LL) VOLTMETER SELECTOR

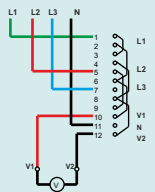


L1N	L1L2	L2L3	L1L3
X	X	X	X
X	X	X	X
X	X	X	X

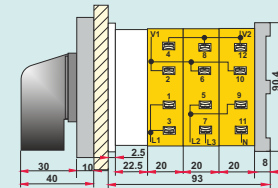
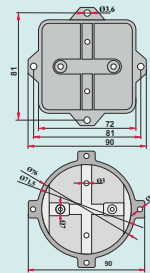
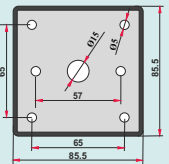


YPT4 V5 016/020/025/032

5.15-BÜYÜK BOY (40A/50A/32A/80A) 3FAZ,4 POZ (LN-LL) VOLT METRE KOMÜTATÖRÜ  
LARGE SIZE (40A/50A/32A/80A) 3PHASE,4 POSITION (LN-LL) VOLTMETER SELECTOR



L1N	L1L2	L2L3	L1L3
X	X	X	X
X	X	X	X
X	X	X	X



YPT4 V5 040/050/063/080

**BAĞLANTI ŞEMASI**  
CONNECTION DIAGRAM

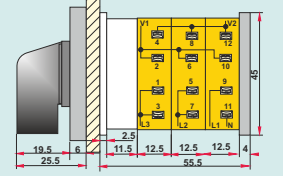
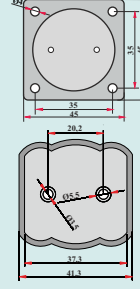
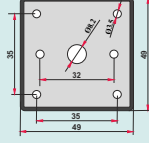
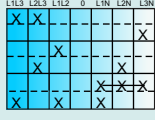
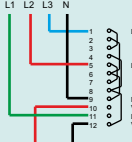
**ÖN GÖRÜNÜŞ**  
FRONT

**ÇERÇEVE**  
FRAME

**ALT KAPAK**  
BOTTOM

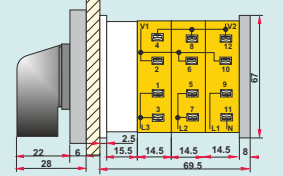
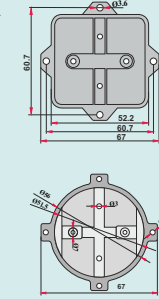
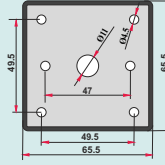
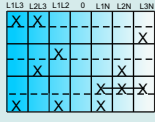
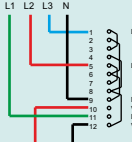
**YANDAN GÖRÜNÜŞ**  
SIDE

**5.16-KÜÇÜK BOY (10A) 3 FAZ ,7POZ (LL-0-LN) VOLT METRE KOMÜTATÖRÜ**  
SMALL SIZE (10A) 3 PHASE ,7POSITION (LL-0-LN) VOLTMETER SELECTOR



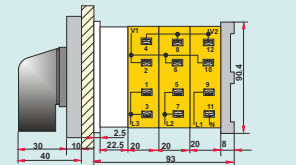
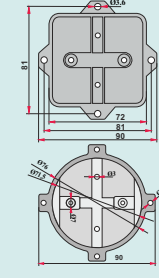
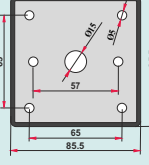
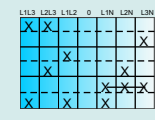
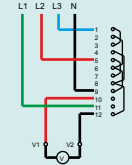
**YPT3 V6 010**

**5.17-ORTA BOY (16A/20A/25A/32A) 3 FAZ ,7POZ (LL-0-LN) VOLT METRE KOMÜTATÖRÜ**  
MEDIUM SIZE (16A/20A/25A/32A) 3 PHASE ,7POSITION (LL-0-LN) VOLTMETER SELECTOR



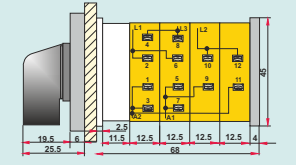
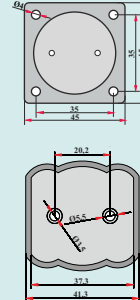
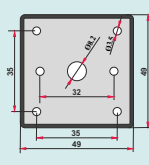
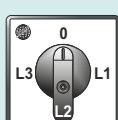
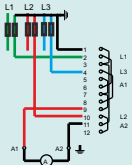
**YPT3 V6 016/020/025/032**

**5.18-BÜYÜK BOY (40A/50A/63A/80A) 3 FAZ 7POZ (LL-0-LN) VOLT METRE KOMÜTATÖRÜ**  
LARGE SIZE (40A/50A/63A/80A) 3 PHASE 7 POSITION (LL-0-LN) VOLTMETER SELECTOR



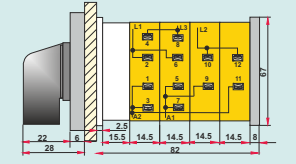
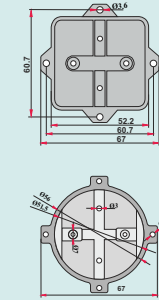
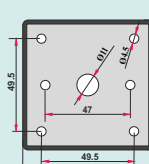
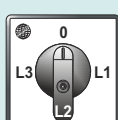
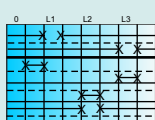
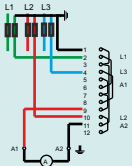
**YPT3 V6 040/050/063/080**

**5.19-KÜÇÜK BOY (10A) AMPERMETRE KOMUTATÖRÜ (AKIM TRAFOSU ÜZERİNDEN)**  
SMALL SIZE (10A) AMMETER SELECTOR ON CURRENT TRANSFORMER

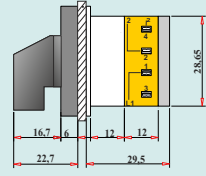
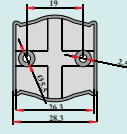
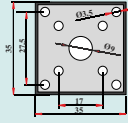
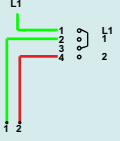


**YPT3 A2 010**

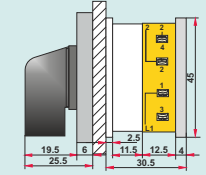
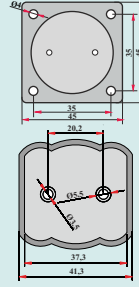
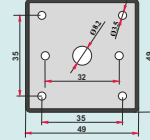
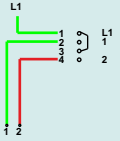
**5.20-KÜÇÜK BOY (16A/20A/25A/32A) AMPERMETRE KOMUTATÖRÜ (AKIM TRAFOSU ÜZERİNDEN)**  
SMALL SIZE (16A/20A/25A/32A) AMMETER SELECTOR ON CURRENT TRANSFORMER



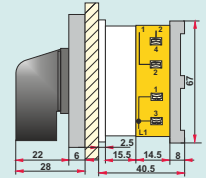
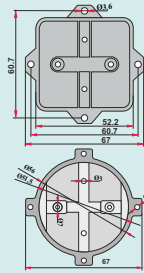
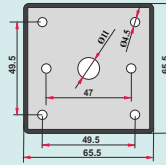
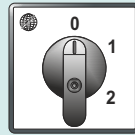
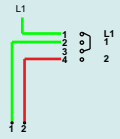
**YPT3 A2 016/020/025/032**

BAĞLANTI ŞEMASI  
CONNECTION DIAGRAMÖN GÖRÜNÜŞ  
FRONTÇERÇEVE  
FRAMEALT KAPAK  
BOTTOMYANDAN GÖRÜNÜŞ  
SIDE6.1-MİNİK BOY (6A/8A/10A) 1 FAZ 2 KADEMELİ ŞALTER  
MINI SIZE (6A/8A/10A) 1 PHASE 2 STEPS SWITCH

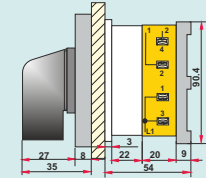
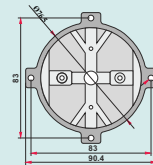
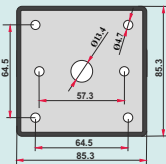
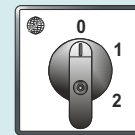
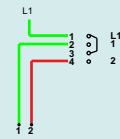
YPM1 12 006/008/010

6.2-KÜÇÜK BOY (10A) 1 FAZ 2 KADEMELİ ŞALTER  
SMALL SIZE (10A) 1 PHASE 2 STEPS SWITCH

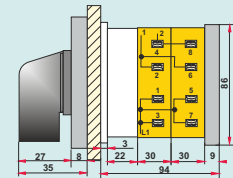
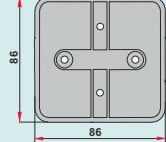
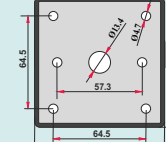
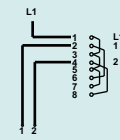
YPT1 12 010

6.3-ORTA BOY (16A/20A/25A/32A) 1 FAZ 2 KADEMELİ ŞALTER  
MEDIUM SIZE (16A/20A/25A/32A) 1 PHASE 2 STEPS SWITCH

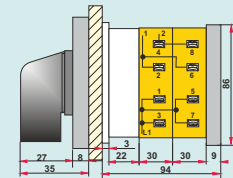
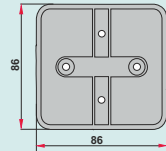
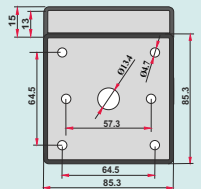
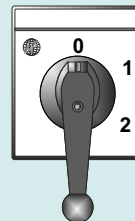
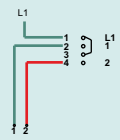
YPT1 12 016/020/025/032

6.4-BÜYÜK BOY (40A/50A/63A/80A) 1 FAZ 2 KADEMELİ ŞALTER  
LARGE SIZE (40A/50A/63A/80A) 1 PHASE 2 STEPS SWITCH

YPT1 12 040/050/063/080

6.5-BÜYÜK KARE TİP (100A/125A/160A/200A) 1 FAZ 2 KADEMELİ ŞALTER  
LARGE SQUARE TYPE (100A/125A/160A/200A) 1 PHASE 2 STEPS SWITCH

YPT1 12 100/125/160/200

6.6-BÜYÜK KARE TİP (250A/315A) 1 FAZ 2 KADEMELİ ŞALTER  
LARGE SQUARE TYPE (250A/315A) 1 PHASE 2 STEPS SWITCH

YPT1 12 250/315



## BAĞLANTI ŞEMASI CONNECTION DIAGRAM

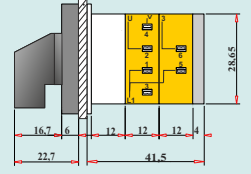
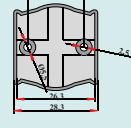
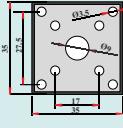
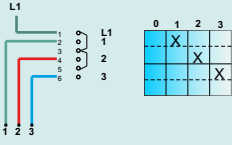
## ÖN GÖRÜNÜŞ FRONT

## ÇERÇEVE FRAME

## ALT KAPAK BOTTOM

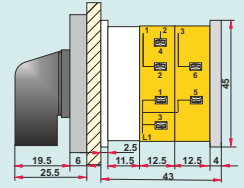
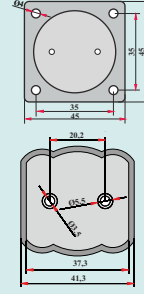
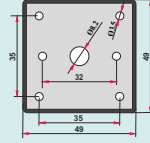
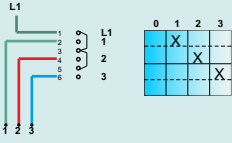
## YANDAN GÖRÜNÜŞ SIDE

### 6.7-MİNİK BOY (6A/8A/10A) 1 FAZ 3 KADEMELİ ŞALTER MINI SIZE (6A/8A/10A) 1 PHASE 3 STEPS SWITCH



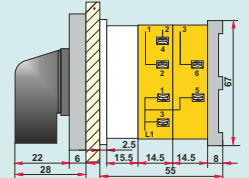
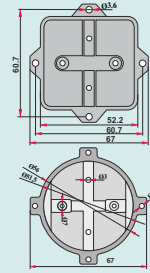
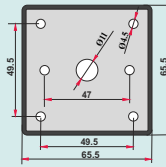
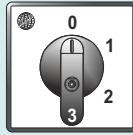
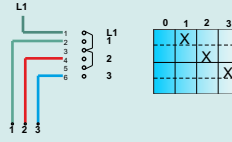
YPM1 13 006/008/010

### 6.8-KÜÇÜK BOY (10A) 1 FAZ 3 KADEMELİ ŞALTER SMALL SIZE (10A) 1 PHASE 3 STEPS SWITCH



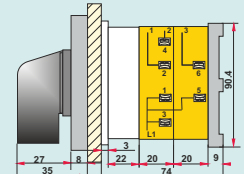
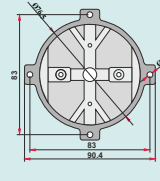
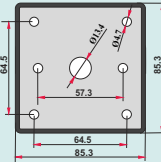
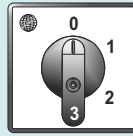
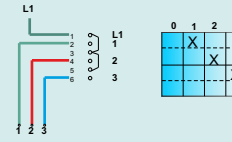
YPT1 13 010

### 6.9-ORTA BOY (16A/20A/25A/32A) 1 FAZ 3 KADEMELİ ŞALTER MADIUM SIZE (16A/20A/25A/32A) 1 PHASE 3 STEPS SWITCH



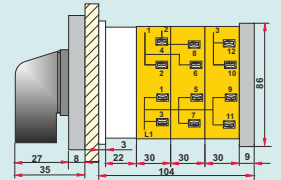
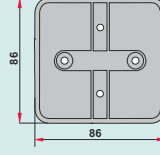
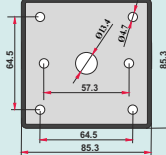
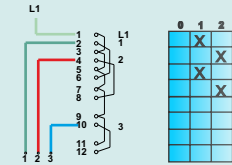
YPT1 13 016/020/025/032

### 6.10-BÜYÜK BOY (40A/50A/63A/80A) 1 FAZ 3 KADEMELİ ŞALTER LARGE SIZE (40A/50A/63A/80A) 1 PHASE 3 STEPS SWITCH



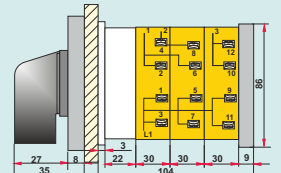
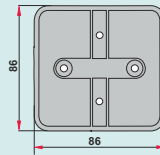
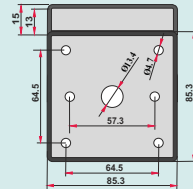
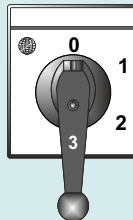
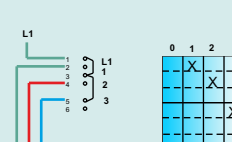
YPT1 13 040/050/063/080

### 6.11-BÜYÜK KARE TİP (100A/125A/160A/200A) 1 FAZ 3 KADEMELİ ŞALTER LARGE SQUARE TYPE (100A/125A/160A/200A) 1 PHASE 3 STEPS SWITCH

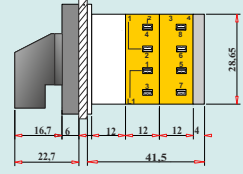
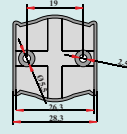
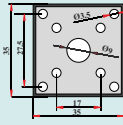
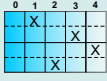


YPT1 13 100/125/160/200

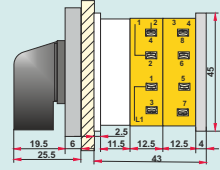
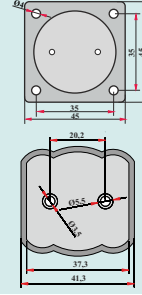
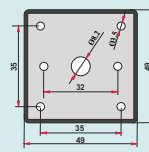
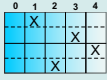
### 6.12-BÜYÜK KARE TİP (250A/315A) 1 FAZ 3 KADEMELİ ŞALTER LARGE SQUARE TYPE (250A/315A) 1 PHASE 3 STEPS SWITCH



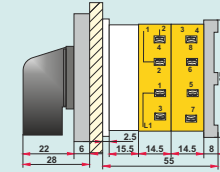
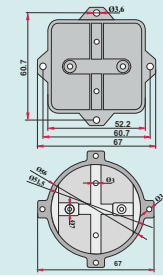
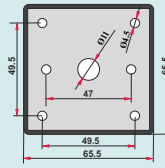
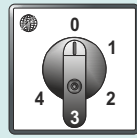
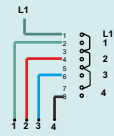
YPT1 13 250/315

BAĞLANTI ŞEMASI  
CONNECTION DIAGRAMÖN GÖRÜNÜŞ  
FRONTÇERÇEVE  
FRAMEALT KAPAK  
BOTTOMYANDAN GÖRÜNÜŞ  
SIDE6.13-MİNİK BOY (6A/8A/10A) 1 FAZ 4 KADEMELİ ŞALTER  
MINI SIZE (6A/8A/10A) 1 PHASE 4 STEPS SWITCH

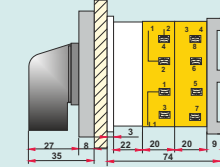
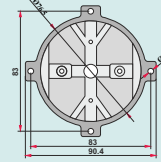
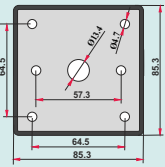
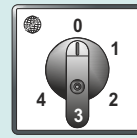
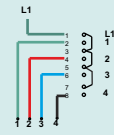
YPM1 14 006/008/010

6.14-KÜÇÜK BOY (10A) 1 FAZ 4 KADEMELİ ŞALTER  
SMALL SIZE (10A) 1 PHASE 4 STEPS SWITCH

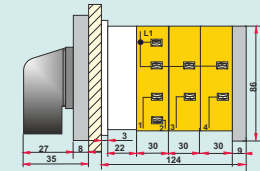
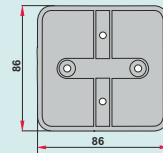
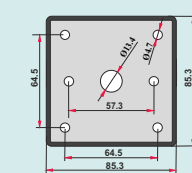
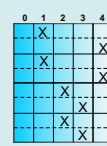
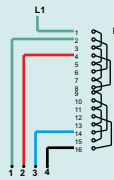
YPT1 14 010

6.15-ORTA BOY (16A/20A/25A/32A) 1 FAZ 4 KADEMELİ ŞALTER  
MEDIUM SIZE (16A/20A/25A/32A) 1 PHASE 4 STEPS SWITCH

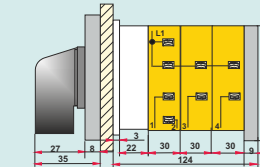
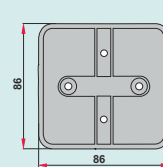
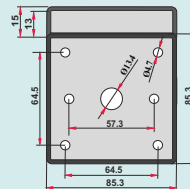
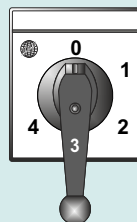
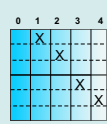
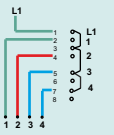
YPT1 14 016/020/025/032

6.16-BÜYÜK BOY (40A/50A/63A/80A) 1 FAZ 4 KADEMELİ ŞALTER  
LARGE SIZE (40A/50A/63A/80A) 1 PHASE 4 STEPS SWITCH

YPT1 14 040/050/063/080

6.17-BÜYÜK KARE TİP (100A/125A/160A/200A) 1 FAZ 4 KADEMELİ ŞALTER  
LARGE SQUARE TYPE (100A/125A/160A/200A) 1 PHASE 4 STEPS SWITCH

YPT1 14 100/125/160/200

6.18-BÜYÜK KARE TİP (160A/200A) 1 FAZ 4 KADEMELİ ŞALTER  
LARGE SQUARE TYPE (160A/200A) 1 PHASE 4 STEPS SWITCH

YPT1 14 160/200

## BAĞLANTI ŞEMASI CONNECTION DIAGRAM

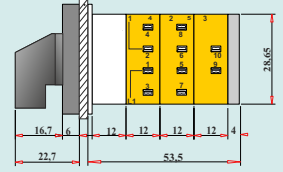
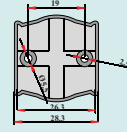
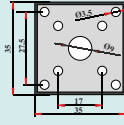
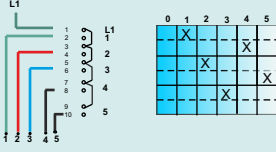
## ÖN GÖRÜNÜŞ FRONT

## ÇERÇEVE FRAME

## ALT KAPAK BOTTOM

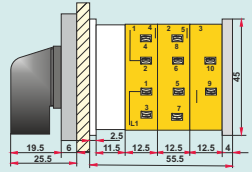
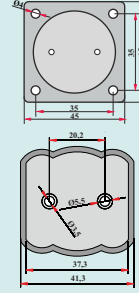
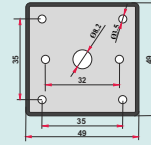
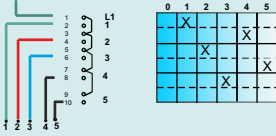
## YANDAN GÖRÜNÜŞ SIDE

### 6.19-MİNİK BOY (6A/8A/10A) 1 FAZ 5 KADEMELİ ŞALTER MINI SIZE (6A/8A/10A) 1 PHASE 5 STEPS SWITCH



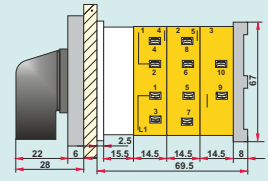
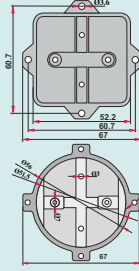
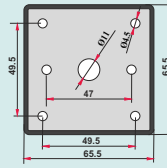
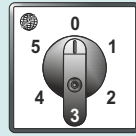
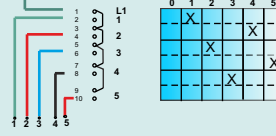
YPM1 15 006/008/010

### 6.20-KÜÇÜK BOY (10A) 1 FAZ 5 KADEMELİ ŞALTER SMALL SIZE (10A) 1 PHASE 5 STEPS SWITCH



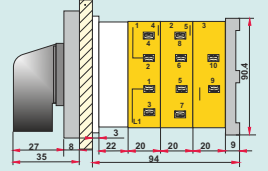
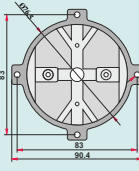
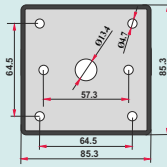
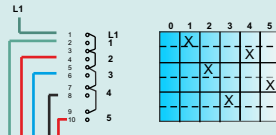
YPT1 15 010

### 6.21-ORTA BOY (16A/20A/25A/32A) 1 FAZ 5 KADEMELİ ŞALTER MEDIUM SIZE (16A/20A/25A/32A) 1 PHASE 5 STEPS SWITCH



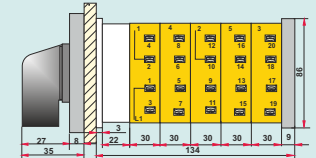
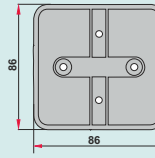
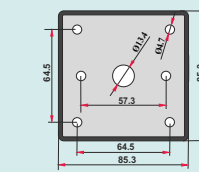
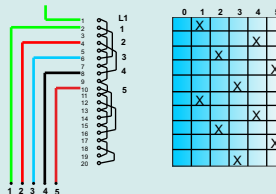
YPT1 15 016/020/025/032

### 6.22-BÜYÜK BOY (40A/50A/63A/80A) 1 FAZ 5 KADEMELİ ŞALTER LARGE SIZE (40A/50A/63A/80A) 1 PHASE 5 STEPS SWITCH



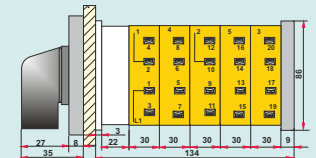
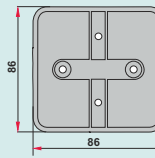
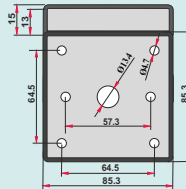
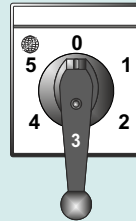
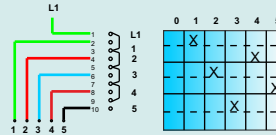
YPT1 15 040/050/063/080

### 6.23-BÜYÜK KARE TİP (100A/125A/160A/200A) 1 FAZ 5 KADEMELİ ŞALTER LARGE SQUARE TYPE (100A/125A/160A/200A) 1 PHASE 5 STEPS SWITCH

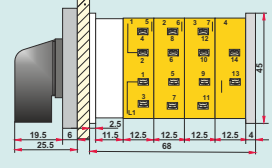
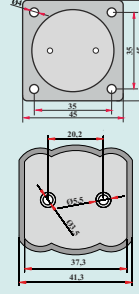
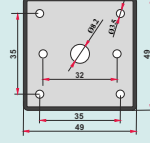
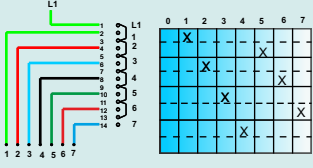


YPT1 15 100/125/160/200

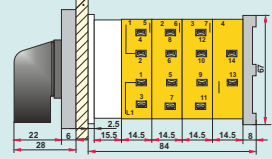
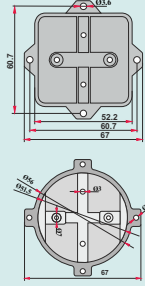
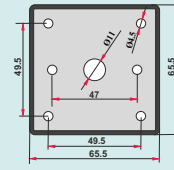
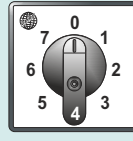
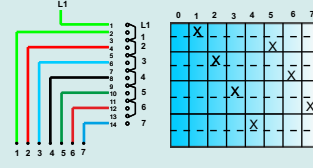
### 6.24-BÜYÜK KARE TİP (250A/315A) 1 FAZ 5 KADEMELİ ŞALTER LARGE SQUARE TYPE (250A/315A) 1 PHASE 5 STEPS SWITCH



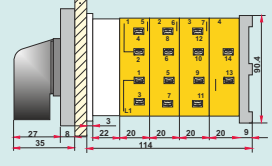
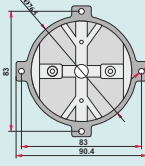
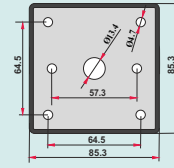
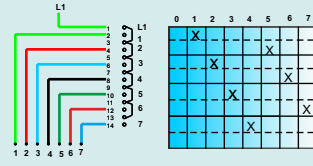
YPT1 15 250/315

**BAĞLANTI ŞEMASI**  
**CONNECTION DIAGRAM**
**ÖN GÖRÜNÜŞ**  
**FRONT**
**ÇERÇEVE**  
**FRAME**
**ALT KAPAK**  
**BOTTOM**
**YANDAN GÖRÜNÜŞ**  
**SIDE**
**6.25-KÜÇÜK BOY (10A) 1 FAZ 7 KADEMELİ ŞALTER**  
**SMALL SIZE (10A) 1 PHASE 7 STEPS SWITCH**


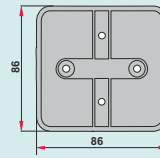
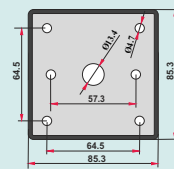
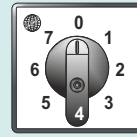
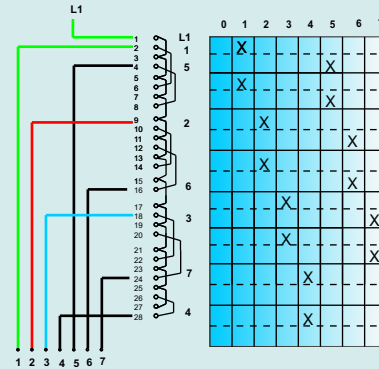
YPT1 17 010

**6.26-ORTA BOY (16A/20A/25A/32A) 1 FAZ 7 KADEMELİ ŞALTER**  
**MADIUM SIZE (16A/20A/25A/32A) 1 PHASE 7 STEPS SWITCH**


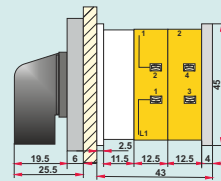
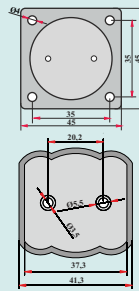
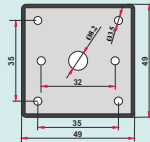
YPT1 17 016/020/025/032

**6.27-BÜYÜK BOY (40A/50A/63A/80A) 1 FAZ 7 KADEMELİ ŞALTER**  
**LARGE SIZE (40A/50A/63A/80A) 1 PHASE 7 STEPS SWITCH**


YPT1 17 040/050/063/080

**6.28-BÜYÜK KARE TİP (100A/125A/160A/200A) 1 FAZ 7 KADEMELİ ŞALTER**  
**LARGE SQUARE TYPE (100A/125A/160A/200A) 1 PHASE 7 STEPS SWITCH**


YPT1 17 100/125/160/200

**6.29-KÜÇÜK BOY (10A) 1 FAZ 2 KADEMELİ KOMUTATÖR ŞALTER**  
**SMALL SIZE (10A) 1 PHASE 2 STEPS COMMUTATOR SWITCH**


YPT1 12 K010





## BAĞLANTI ŞEMASI CONNECTION DIAGRAM

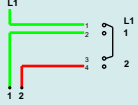
## ÖN GÖRÜNÜŞ FRONT

## ÇERÇEVE FRAME

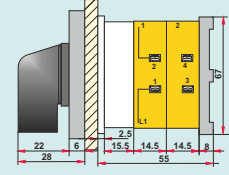
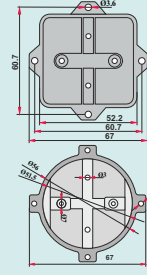
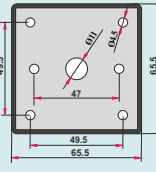
## ALT KAPAK BOTTOM

## YANDAN GÖRÜNÜŞ SIDE

### 6.30-ORTA BOY (16A/20A/25A/32A) 1 FAZ 2 KADEMELİ KOMUTATÖR ŞALTER MEDIUM SIZE (16A/20A/25A/32A) 1 PHASE 2 STEPS COMMUTATOR SWITCH

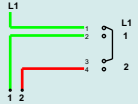


0	1	2
-	X	X
-	X	X

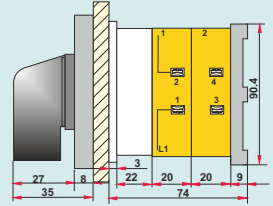
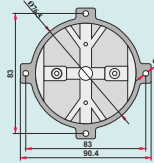
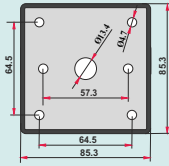


YPT1 12 K016/020/025/032

### 6.31-BÜYÜK BOY (40A/50A/63A/80A) 1 FAZ 2 KADEMELİ KOMUTATÖR ŞALTER LARGE SIZE (40A/50A/63A/80A) 1 PHASE 2 STEPS COMMUTATOR SWITCH

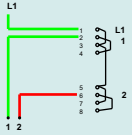


0	1	2
-	X	X
-	X	X

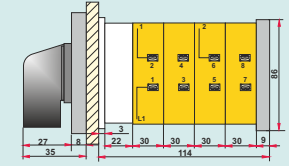
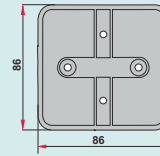
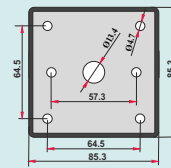


YPT1 12 K040/050/063/080

### 6.32-BÜYÜK KARE TİP (100A/125A/160A/200A) 1 FAZ 2 KADEMELİ KOMUTATÖR ŞALTER LARGE SQUARE TYPE (100A/125A/160A/200A) 1 PHASE 2 STEPS COMMUTATOR SWITCH

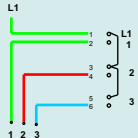


0	1	2
-	X	X
-	X	X

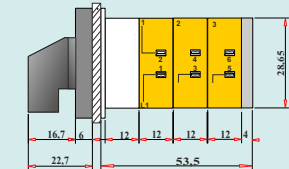
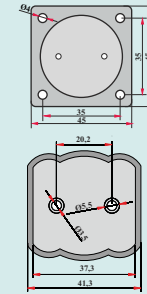
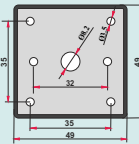
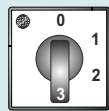


YPT1 12 K100/125/160/200

### 6.33- KÜÇÜK BOY (10A) 1 FAZ 3 KADEMELİ KOMUTATÖR ŞALTER SMALL SIZE (10A) 1 PHASE 3 STEPS COMMUTATOR SWITCH



0	1	2	3
-	X	X	X
-	X	X	X
-	X	X	X

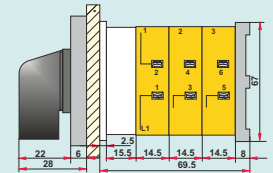
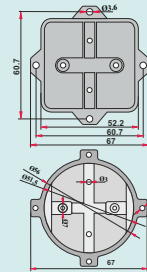
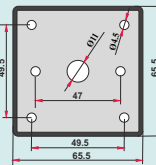


YPT1 12 K010

### 6.34- ORTA BOY (16A/20A/25A/32A) 1 FAZ 3 KADEMELİ KOMUTATÖR ŞALTER MEDIUM SIZE (16A/20A/25A/32A) 1 PHASE 3 STEPS COMMUTATOR SWITCH

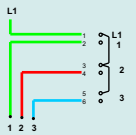


0	1	2	3
-	X	X	X
-	X	X	X

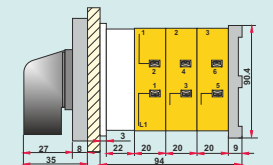
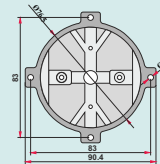
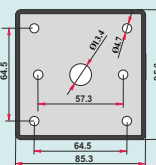
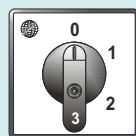


YPT1 13 K016/020/025/032

### 6.35- BÜYÜK BOY (40A/50A/63A/80A) 1 FAZ 3 KADEMELİ KOMUTATÖR ŞALTER LARGE SIZE (40A/50A/63A/80A) 1 PHASE 3 STEPS COMMUTATOR SWITCH



0	1	2	3
-	X	X	X
-	X	X	X



YPT1 13 K040/050/063/080



**BAĞLANTI ŞEMASI**  
CONNECTION DIAGRAM

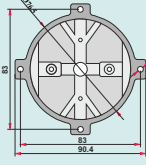
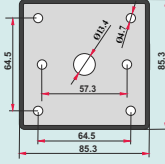
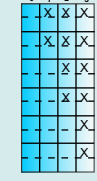
**ÖN GÖRÜNÜŞ**  
FRONT

**ÇERÇEVE**  
FRAME

**ALT KAPAK**  
BOTTOM

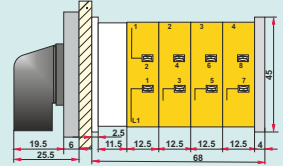
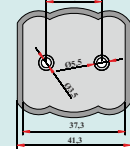
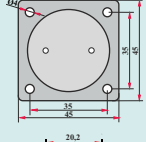
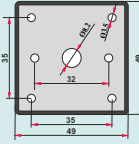
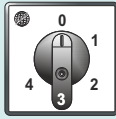
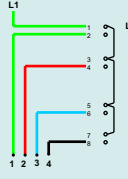
**YANDAN GÖRÜNÜŞ**  
SIDE

**6.36- BÜYÜK BOY (100A/125A/160A/200A) 1 FAZ 3 KADEMELİ KOMUTATÖR ŞALTER**  
LARGE SIZE (100A/125A/160A/200A) 1 PHASE 3 STEPS COMMUTATOR SWITCH



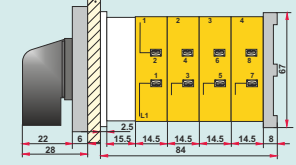
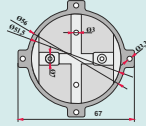
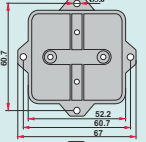
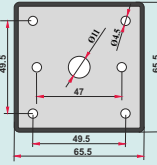
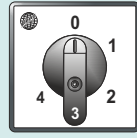
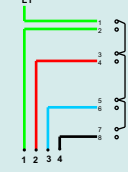
**YPT1 13 K100/125/160/200**

**6.37- KÜÇÜK BOY (10A) 1 FAZ 4 KADEMELİ KOMUTATÖR ŞALTER**  
SMALL SIZE (10A) 1 PHASE 4 STEPS COMMUTATOR SWITCH



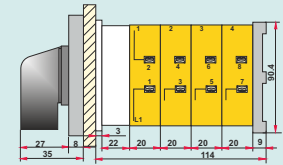
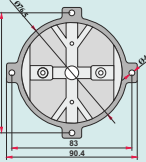
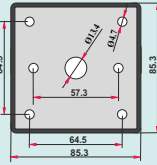
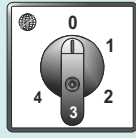
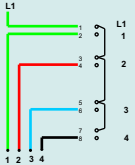
**YPT1 14 K010**

**6.38- ORTA BOY (16A/20A/25A/32A) 1 FAZ 4 KADEMELİ KOMUTATÖR ŞALTER**  
MEDIUM SIZE (16A/20A/25A/32A) 1 PHASE 4 STEPS COMMUTATOR SWITCH



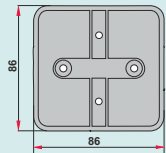
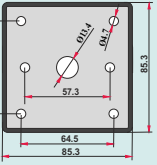
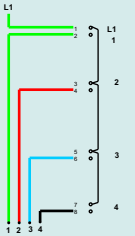
**YPT1 14 K016/020/025/032**

**6.39- BÜYÜK BOY (40A/50A/63A/80A) 1 FAZ 4 KADEMELİ KOMUTATÖR ŞALTER**  
LARGE SIZE (40A/50A/63A/80A) 1 PHASE 4 STEPS COMMUTATOR SWITCH



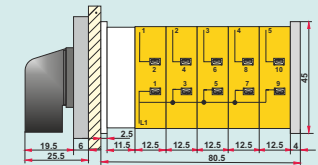
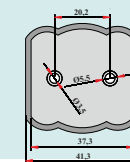
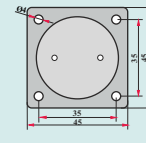
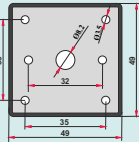
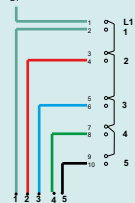
**YPT1 14 K040/050/063/080**

**6.40- BÜYÜK KARE TİP (100A/125A/160A/200A) 1 FAZ 4 KADEMELİ KOMUTATÖR ŞALTER**  
LARGE SQUARE TYPE (100A/125A/160A/200A) 1 PHASE 4 STEPS COMMUTATOR SWITCH



**YPT1 14 K100/125/160/200**

**6.41- KÜÇÜK BOY (10A) 1 FAZ 5 KADEMELİ KOMUTATÖR ŞALTER**  
SMALL SIZE (10A) 1 PHASE 5 STEPS COMMUTATOR SWITCH



**YPT1 15 K010**

## BAĞLANTI ŞEMASI CONNECTION DIAGRAM

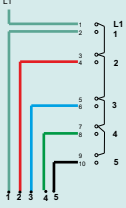
## ÖN GÖRÜNÜŞ FRONT

## ÇERÇEVE FRAME

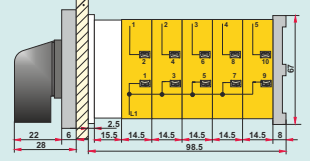
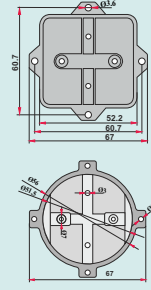
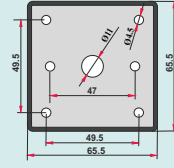
## ALT KAPAK BOTTOM

## YANDAN GÖRÜNÜŞ SIDE

### 6.42-ORTA BOY (16A/20A/25A/32A) 1 FAZ 5 KADEMELİ KOMUTATÖR MEDIUM SIZE (16A/20A/25A/32A) 1 PHASE 5 STEPS COMMUTATOR SWITCH

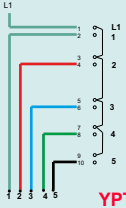


0	X	X	X	X	X
1	X	X	X	X	X
2	X	X	X	X	X
3	X	X	X	X	X
4	X	X	X	X	X
5	X	X	X	X	X

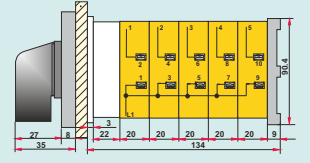
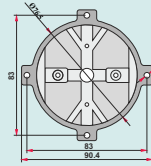
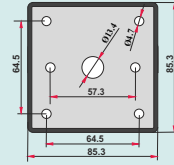
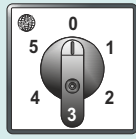


YPT1 15 K016/020/025/032

### 6.43-BÜYÜK BOY (40A/50A/63A/80A) 1 FAZ 5 KADEMELİ KOMUTATÖR LARGE SIZE (40A/50A/63A/80A) 1 PHASE 5 STEPS COMMUTATOR SWITCH

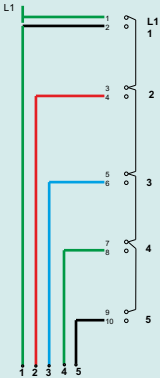


0	X	X	X	X	X
1	X	X	X	X	X
2	X	X	X	X	X
3	X	X	X	X	X
4	X	X	X	X	X
5	X	X	X	X	X

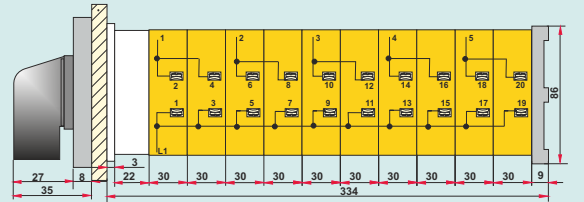
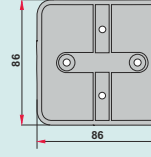
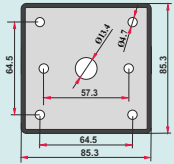
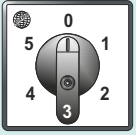


YPT1 15 K040/050/063/080

### 6.44-BÜYÜK KARE BOY (100A/125A/160A/200A) 1 FAZ 5 KADEMELİ KOMUTATÖR LARGE SQUARE TYPE (100A/125A/160A/200A) 1 PHASE 5 STEPS COMMUTATOR SWITCH

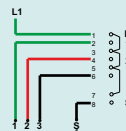


0	X	X	X	X	X
1	X	X	X	X	X
2	X	X	X	X	X
3	X	X	X	X	X
4	X	X	X	X	X
5	X	X	X	X	X

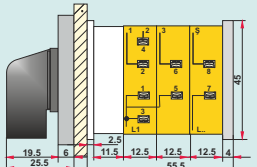
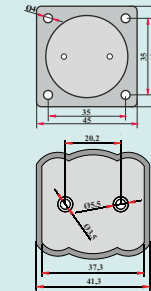
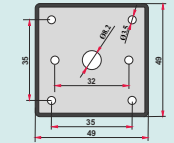


YPT1 15 100/125/160/200

### 6.45-KÜÇÜK BOY (10A) 1 FAZ 3 KADEMELİ ŞEBEKELİ SMALL SIZE (10A) 1 PHASE 3 STEPS WITH AUXILIARY WINDING

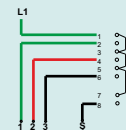


0	X	X	X
1	X	X	X
2	X	X	X
3	X	X	X

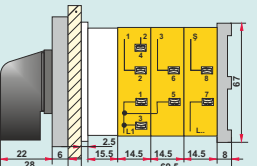
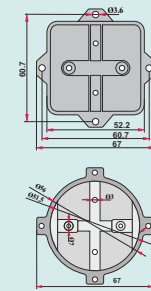
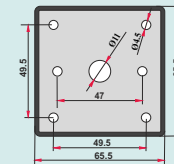


YPT1 13 Ş010

### 6.46-ORTA BOY (16A/20A/25A/32A) 1 FAZ 3 KADEMELİ ŞEBEKELİ MEDIUM SIZE (16A/20A/25A/32A) 1 PHASE 3 STEPS WITH AUXILIARY WINDING



0	X	X	X
1	X	X	X
2	X	X	X
3	X	X	X



YPT1 13 Ş016/020/025/032

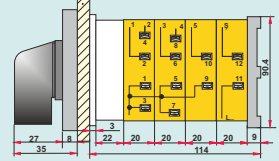
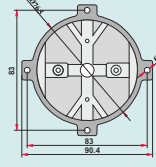
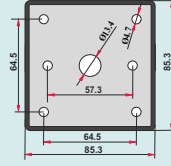
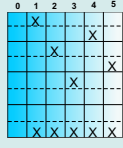
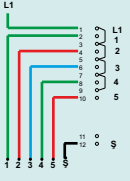

**BAĞLANTI ŞEMASI**  
 CONNECTION DIAGRAM

**ÖN GÖRÜNÜŞ**  
 FRONT

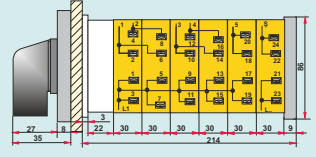
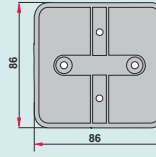
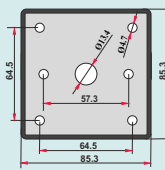
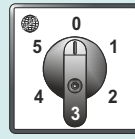
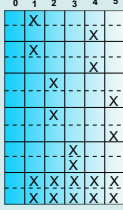
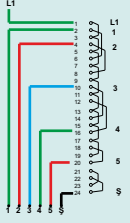
**ÇERÇEVE**  
 FRAME

**ALT KAPAK**  
 BOTTOM

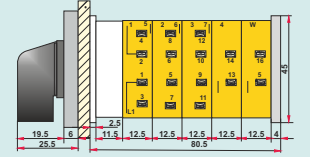
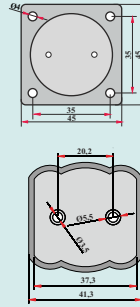
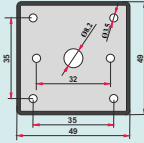
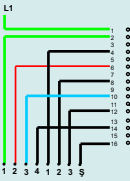
**YANDAN GÖRÜNÜŞ**  
 SIDE

**6.47-BÜYÜK BOY (40A/50A/63A/80A) 1 FAZ 5 KADEMELİ ŞEBEKELİ**  
 LARGE SIZE (40A/50A/63A/80A) 1 PHASE 5 STEPS WITH AUXILIARY WINDING


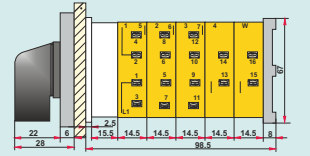
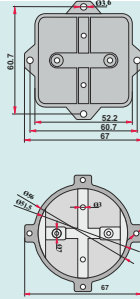
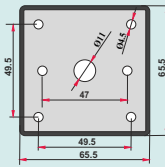
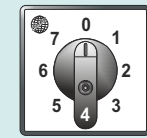
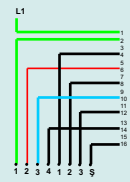
YPT1 15 Ş040/050/063/080

**6.48-BÜYÜK KARE TİP (100A/125A/160A/200A) 1 FAZ 5 KADEMELİ ŞEBEKELİ**  
 LARGE SQUARE TYPE (100A/125A/160A/200A) 1 PHASE 5 STEPS WITH AUXILIARY WINDING


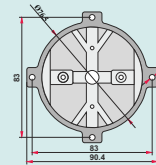
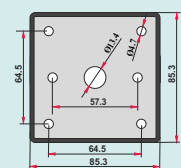
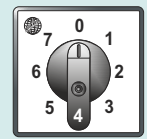
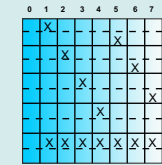
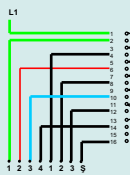
YPT1 15 Ş100/125/160/200

**6.49- KÜÇÜK BOY (10A) 1 FAZ 7 KADEMELİ ŞEBEKELİ**  
 SMALL SIZE (10A) 1 PHASE 7 STEPS WITH AUXILIARY WINDING


YPT1 17 Ş010

**6.50- ORTA BOY (16A/20A/25A/32A) 1 FAZ 7 KADEMELİ ŞEBEKELİ**  
 MEDIUM SIZE (16A/20A/25A/32A) 1 PHASE 7 STEPS WITH AUXILIARY WINDING


YPT1 17 016/020/025/032

**6.51- BÜYÜK BOY (40A/50A/63A/80A) 1 FAZ 7 KADEMELİ ŞEBEKELİ**  
 LARGE SIZE (40A/50A/63A/80A) 1 PHASE 7 STEPS WITH AUXILIARY WINDING


YPT1 17 Ş040/050/063/080

**BAĞLANTI ŞEMASI**  
**CONNECTION DIAGRAM**

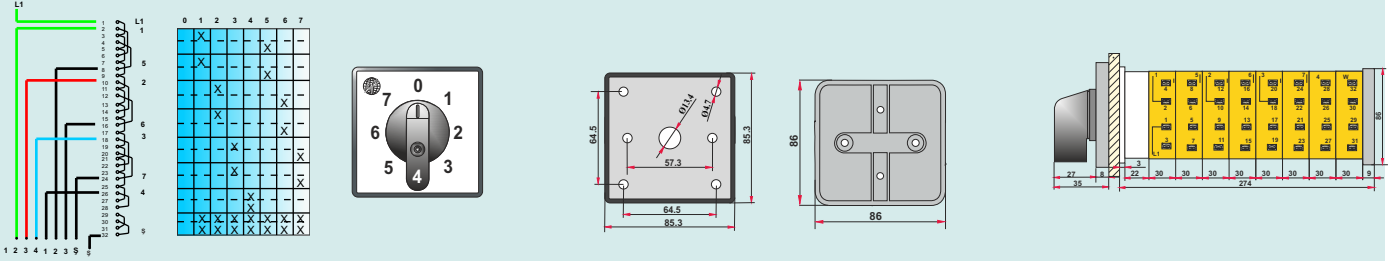
**ÖN GÖRÜNÜŞ**  
**FRONT**

**ÇERÇEVE**  
**FRAME**

**ALT KAPAK**  
**BOTTOM**

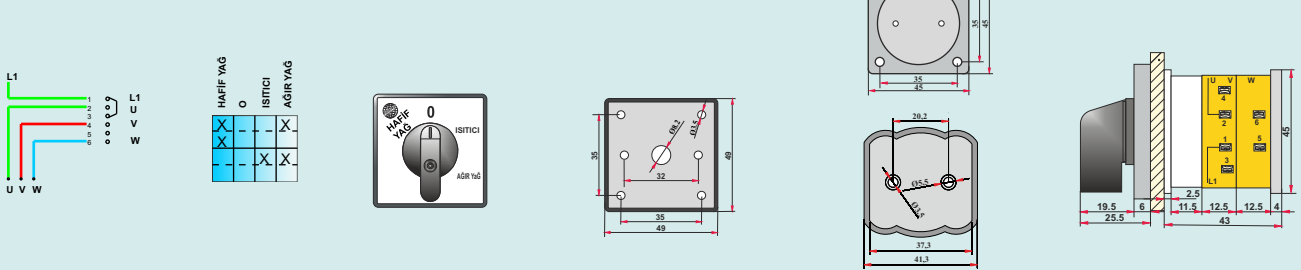
**YANDAN GÖRÜNÜŞ**  
**SIDE**

**6.52- BÜYÜK KARE TİP (100A/125A/160A/200A) 1 FAZ 7 KADEMELİ ŞEBEKELİ**  
**LARGE SQUARE TYPE (100A/125A/160A/200A) 1 PHASE 7 STEPS WITH AUXILIARY WINDING**



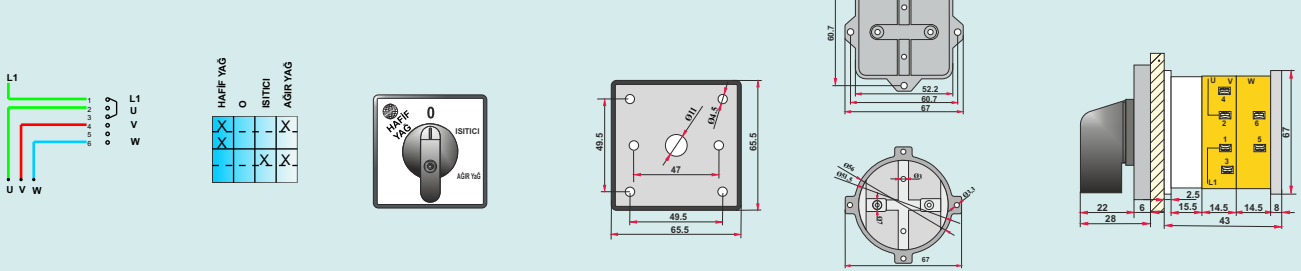
YPT1 17 Ş100/125/160/200

**6.53- KÜÇÜK BOY (10A) 1 FAZ BRULÖR YAĞ ŞALTERİ**  
**SMALL SIZE (10A) 1 PHASE BURNER OIL SWITCH**



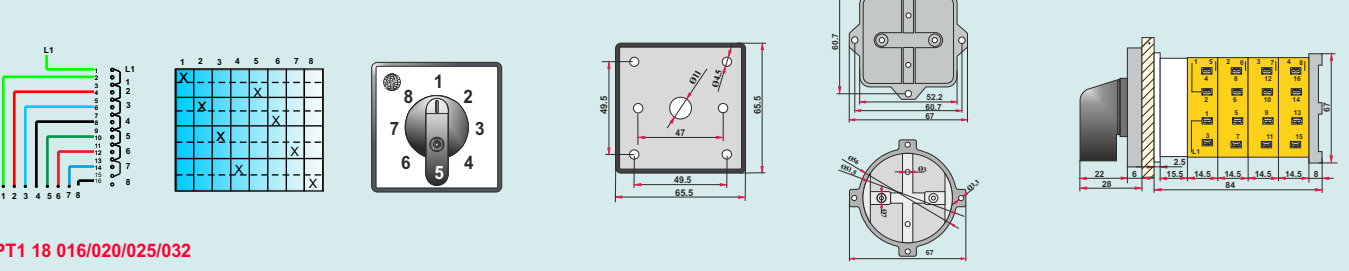
YPT1 13 Y010

**6.54- ORTA BOY (16A/20A/25A/32A) 1 FAZ BRULÖR YAĞ ŞALTERİ**  
**MEDIUM SIZE (16A/20A/25A/32A) 1 PHASE BURNER OIL SWITCH**



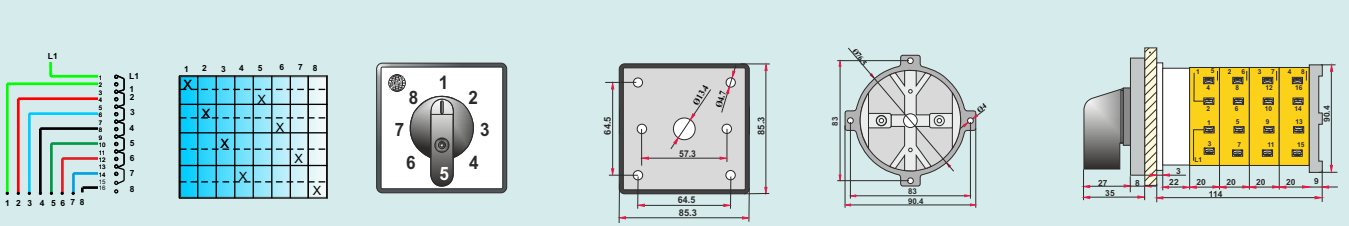
YPT1 13 Y016/020/025/032

**6.55- ORTA BOY (16A/20A/25A/32A) 1 FAZ 8 KADEMELİ ŞALTER**  
**MADIUM SIZE (16A/20A/25A/32A) 1 PHASE 8 STEPS SWITCH**



YPT1 18 016/020/025/032

**6.56- BÜYÜK BOY (40A/50A/63A/80A) 1 FAZ 8 KADEMELİ ŞALTER**  
**LARGE SIZE (40A/50A/63A/80A) 1 PHASE 8 STEPS SWITCH**



YPT1 18 040/050/063/080

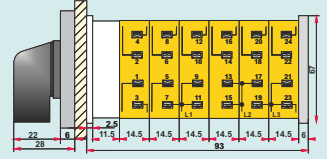
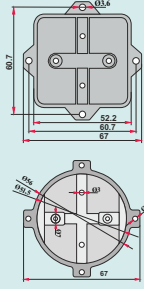
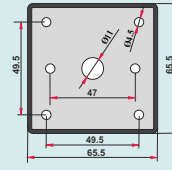
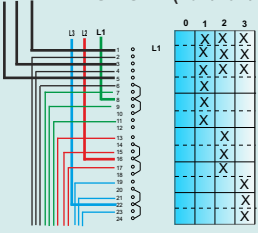
**BAĞLANTI ŞEMASI**  
 CONNECTION DIAGRAM

**ÖN GÖRÜNÜŞ**  
 FRONT

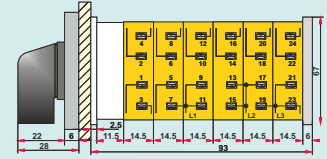
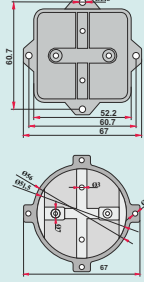
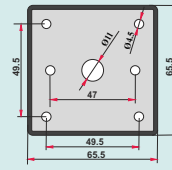
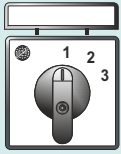
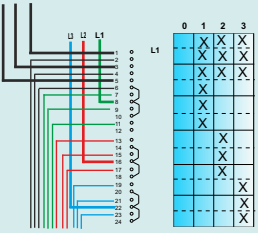
**ÇERÇEVE**  
 FRAME

**ALT KAPAK**  
 BOTTOM

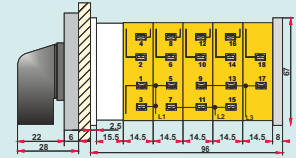
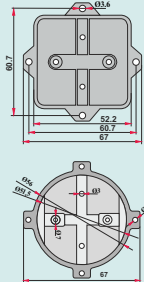
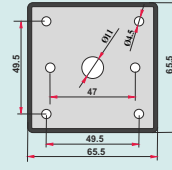
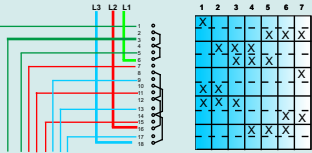
**YANDAN GÖRÜNÜŞ**  
 SIDE

**7.1 - ORTA BOY (16A/20A/25A/32A) 3 FAZ 3 KADEMELİ GAZALTI ŞALTER**  
 MEDIUM SIZE (16A/20A/25A/32A) 3 PHASE MIG/MAG WELDING 3 STEPS SWITCH


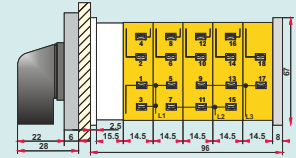
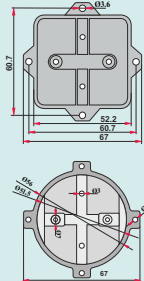
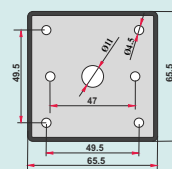
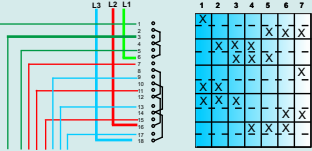
YPT3 G1 016/020/025/032

**7.2 - BÜYÜK BOY (40A/50A) 3 FAZ 3 KADEMELİ GAZALTI ŞALTER**  
 LARGE SIZE (40A/50A) 3 PHASE MIG/MAG WELDING 3 STEPS SWITCH


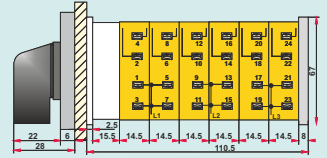
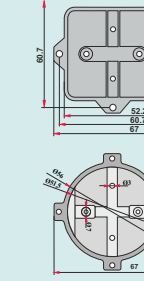
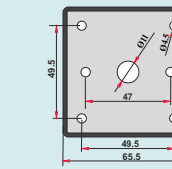
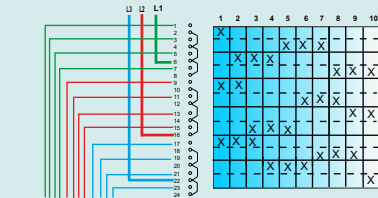
YPT3 G1 040/050

**7.3 - ORTA BOY (16A/20A/25A/32A) 3 FAZ 7 KADEMELİ GAZALTI ŞALTER**  
 MEDIUM SIZE (16A/20A/25A/32A) 3 PHASE MIG/MAG WELDING 7 STEPS SWITCH


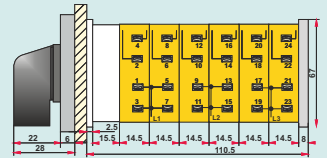
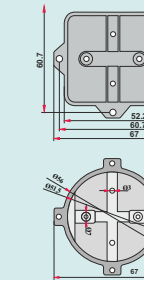
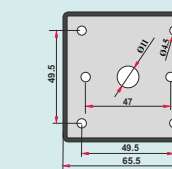
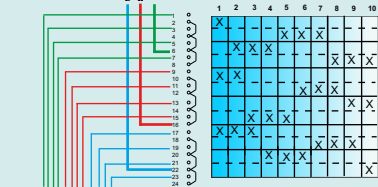
YPT3 G2 016/020/025/032

**7.4 - BÜYÜK BOY (40A/50A) 3 FAZ 7 KADEMELİ GAZALTI ŞALTER**  
 LARGE SIZE (40A/50A) 3 PHASE MIG/MAG WELDING 7 STEPS SWITCH


YPT3 G2 040/050

**7.5 - ORTA BOY (16A/20A/25A/32A) 3 FAZ 10 KADEMELİ GAZALTI ŞALTER**  
 MEDIUM SIZE (16A/20A/25A/32A) 3 PHASE MIG/MAG WELDING 10 STEPS SWITCH


YPT3 G3 016/020/025/032

**7.6 - BÜYÜK BOY (40A/50A) 3 FAZ 10 KADEMELİ GAZALTI ŞALTER**  
 LARGE SIZE (40A/50A) 3 PHASE MIG/MAG WELDING 10 STEPS SWITCH


NPT3 G3 040/050



BÜYÜK BOY  
LARGE SIZE

MİL BOYU  
SHAFT DIMENSIONS

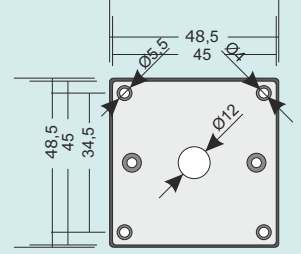
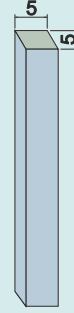
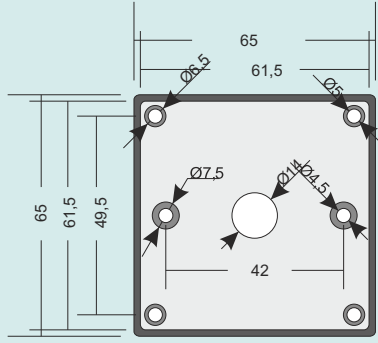
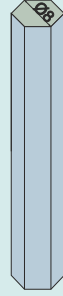
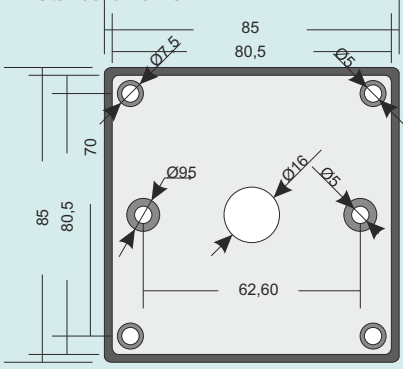
ORTA BOY  
MEDIUM SIZE

MİL BOYU  
SHAFT DIMENSIONS

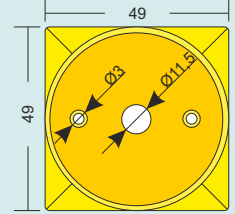
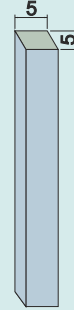
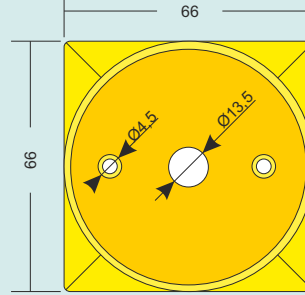
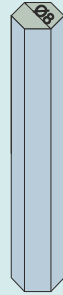
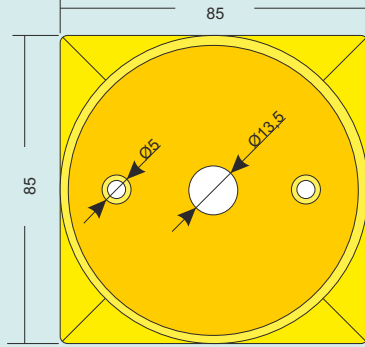
KÜÇÜK BOY  
SMALL SIZE

MİL BOYU  
SHAFT DIMENSIONS

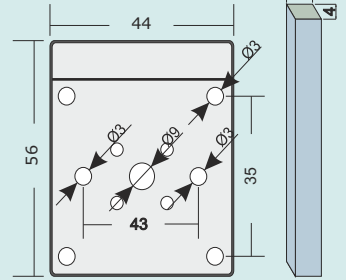
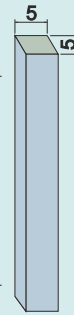
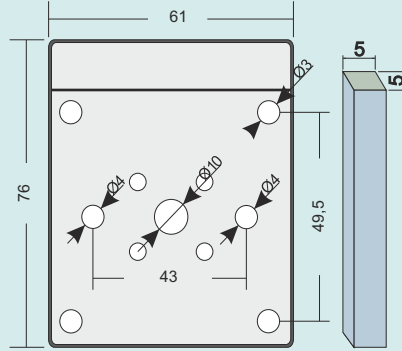
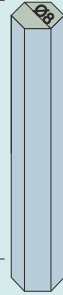
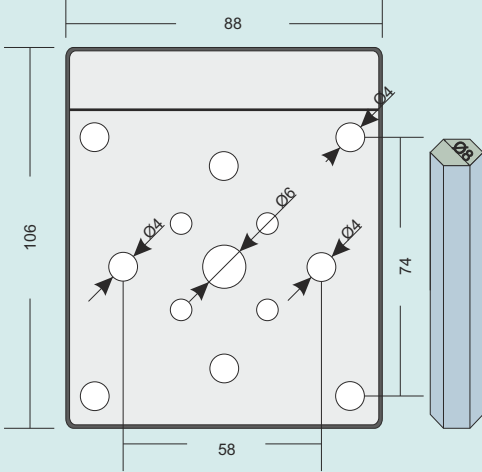
8.1 -Standart çerçeve  
Standard frame



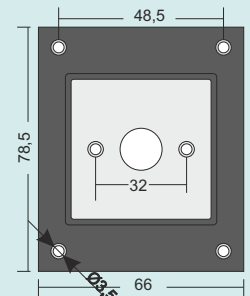
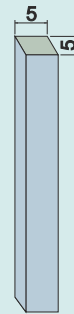
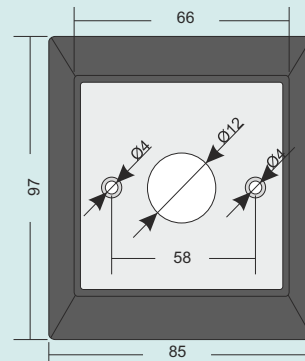
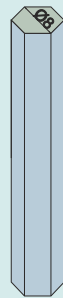
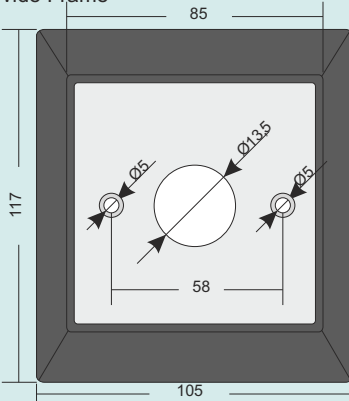
8.2 -Kilitli Çerçeve  
Padlock Frame



8.3 -Etiketli Çerçeve  
Labelled Frame



8.4 -Geniş Çerçeve  
Wide Frame



BÜYÜK BOY  
LARGE SIZE

MİL BOYU  
SHAFT DIMENSIONS

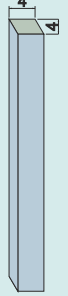
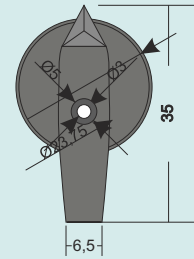
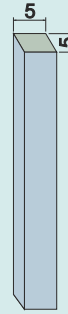
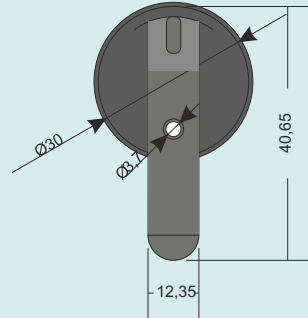
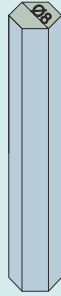
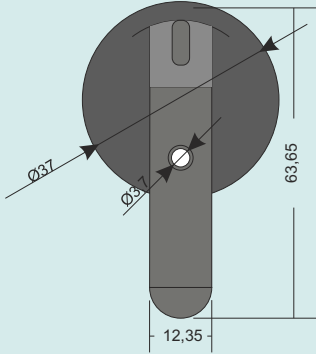
ORTA BOY  
MEDIUM SIZE

MİL BOYU  
SHAFT DIMENSIONS

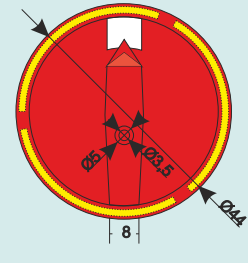
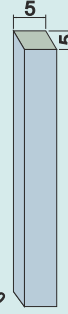
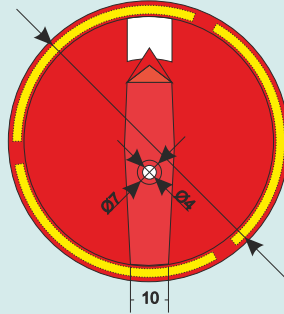
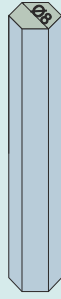
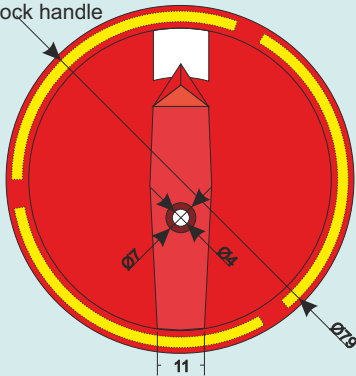
KÜÇÜK BOY  
SMALL SIZE

MİL BOYU  
SHAFT DIMENSIONS

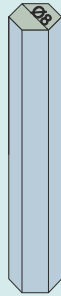
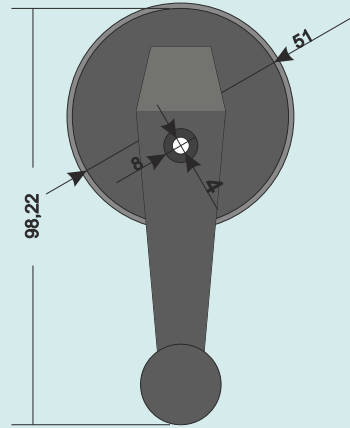
8.5 -Standart kelebek  
Standard handle



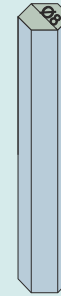
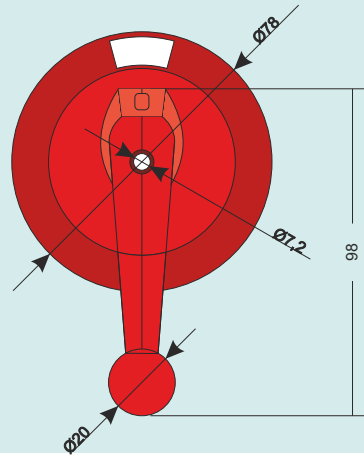
8.6 -Kilitli kelebek  
Padlock handle



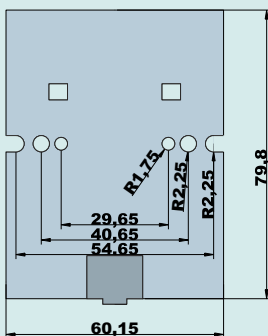
8.7 -Topuz kelebek  
Knob latch



8.8 -Kilitli topuz kelebek  
Knob lock



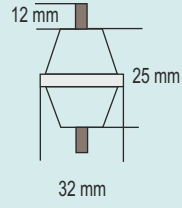
8.9 - Ray Klemens Aparatı  
Rail Clip Apparatus



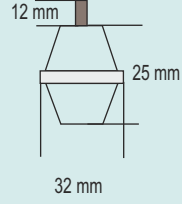
Tabandan şalterin tabanına vida takılmak suretiyle montaj edilir. Ordan da ray klemensine takılabilir.

The rail clip is assembled to the base of the switch with a screw and so, the switch can be assembled to the rail.

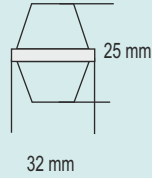


**ÇİZİM**  
DRAWING**SON ÜRÜN**  
FINAL PRODUCT**9.1 - METRİK 5 ÇİFT CİVATALI İZOLATÖR**  
METRIC 5 DOUBLE SCREW INSULATOR

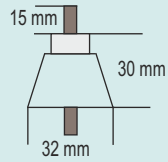
OPA 1N 005

**9.2 - METRİK 5 CİVATA + SOMUN İZOLATÖR**  
METRIC 5 SCREW + NUT INSULATOR

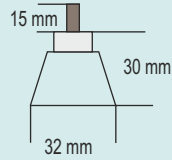
OPA 1N 015

**9.3 - METRİK 5 ÇİFT SOMUNLU İZOLATÖR**  
METRIC 5 DOUBLE NUT INSULATOR

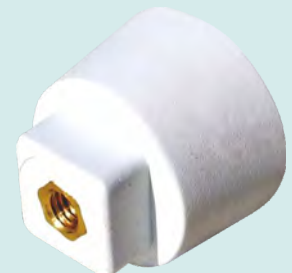
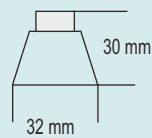
OPA 1N 115

**9.4 - METRİK 6 ÇİFT CİVATALI İZOLATÖR**  
METRIC 6 DOUBLE SCREW INSULATOR

OPA 1N 006

**9.5 - METRİK 6 CİVATA + SOMUN İZOLATÖR**  
METRIC 6 SCREW + NUT INSULATOR

OPA 1N 016

**9.6 - METRİK 6 ÇİFT SOMUNLU İZOLATÖR**  
METRIC 6 DOUBLE NUT INSULATOR

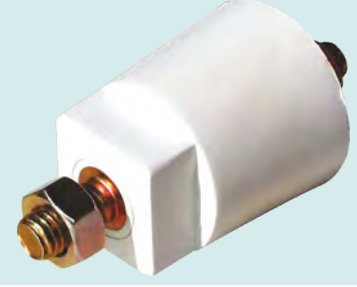
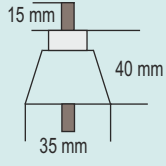
OPA 1N 116



ÇİZİM  
DRAWING

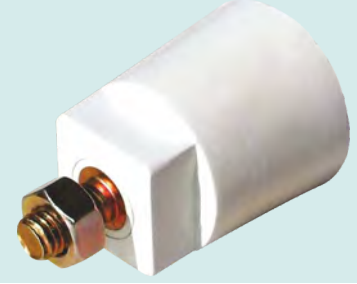
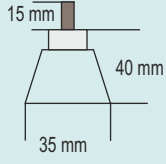
SON ÜRÜN  
FINAL PRODUCT

9.7 - METRİK 8 ÇİFT CİVATALI İZOLATÖR  
METRIC 8 DOUBLE SCREW INSULATOR



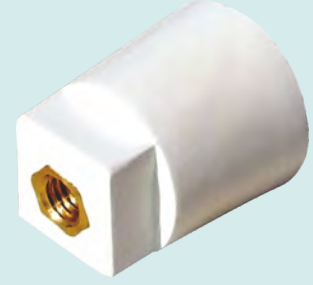
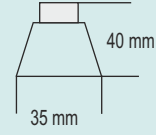
OPA 1N 008

9.8 - METRİK 8 CİVATA + SOMUN İZOLATÖR  
METRIC 8 SCREW + NUT INSULATOR



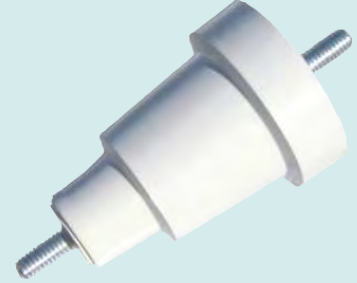
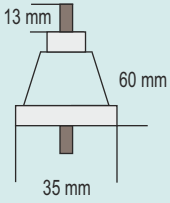
OPA 1N 018

9.9 - METRİK 8 ÇİFT SOMUNLU İZOLATÖR  
METRIC 8 DOUBLE NUT INSULATOR



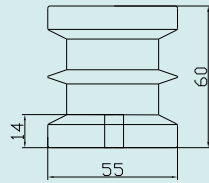
OPA 1N 118

9.10 - METRİK 6 ÇİFT CİVATALI İZOLATÖR (65 mm)  
METRIC 6 DOUBLE SCREW INSULATOR (65 mm)



OPA 2N 006

9.11 - 1N 500 İZOLATÖR  
1N 500 INSULATOR



OPA 1N 500



## YANDAN GÖRÜNÜŞ SIDE

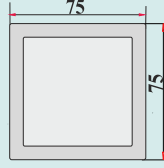
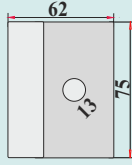
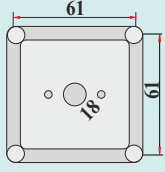
## ÜST GÖRÜNÜŞ TOP

## ALT KAPAK BOTTOM

## SON ÜRÜN FINAL PRODUCT

## UYGUN ŞALTERLER SUITABLE SWITCHES

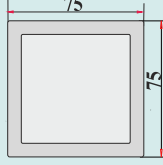
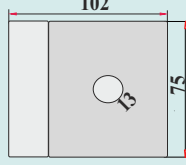
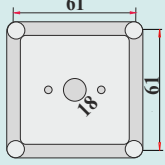
### 10.1 - IP 65 MİNİK BOY KISA ŞALTER KUTUSU IP 65 MINI SIZE SHORT ENCLOSURE BOX



1-2-3-4 FAZ / Phase 10A. PAKO (AÇ-KAPA) / On - Off  
1-2 FAZ / Phase 10A. KUTUP DEĞİŞTİRİCİ / Changeover  
1 FAZ / Phase 10A. 2-3-4 KADEMELİ / Steps  
1-2 FAZ / Phase 10A. ENVERSÖR / Reversing

### KUT IP 6501

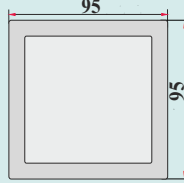
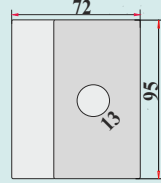
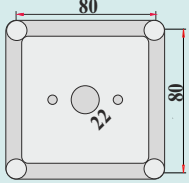
### 10.2 - IP 65 MİNİK BOY UZUN ŞALTER KUTUSU IP 65 MINI SIZE LONG ENCLOSURE BOX



1-2-3-4 FAZ / Phase 10A. AÇ-KAPA / On - Off  
1-2-3-4 FAZ / Phase 10A. KUTUP DEĞİŞTİRİCİ / Changeover  
1-2-3-4 FAZ / Phase 10A. 1-2-3-4-5-6-7 KADEMELİ / Steps

### KUT IP 6502

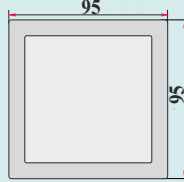
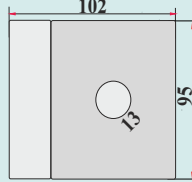
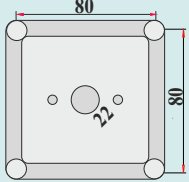
### 10.3 - IP 65 ORTA BOY KISA ŞALTER KUTUSU IP 65 MEDIUM SIZE SHORT ENCLOSURE BOX



1-2-3-4 FAZ / Phase 16-20-25-32A. AÇ-KAPA / On - Off  
1-2 FAZ / Phase 16-20-25-32A. KUTUP DEĞİŞTİRİCİ / Changeover  
1-2 FAZ / Phase 16-20-25-32A. ENVERSÖR / Reversing

### KUT IP 6503

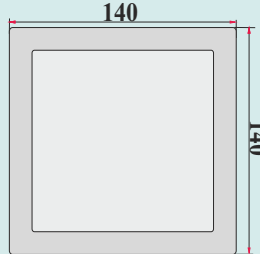
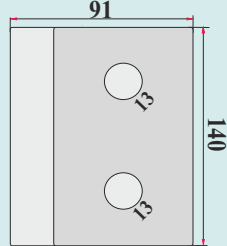
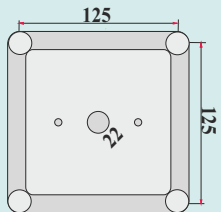
### 10.4 - IP 65 ORTA BOY UZUN ŞALTER KUTUSU IP 65 MEDIUM SIZE LONG ENCLOSURE BOX



1-2-3-4 FAZ / Phase 16-20-25-32 A. AÇ-KAPA / On - Off  
1-2-3-4 FAZ / Phase 16-20-25-32 A. KUTUP DEĞİŞTİRİCİ / On - Off  
1-2-3-4 FAZ / Phase 16-20-25-32 A. ENVERSÖR / Reversing  
1 FAZ / Phase 1-2-3-4-5-6-7 KADEMELİ / Steps

### KUT IP 6504

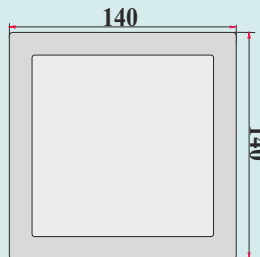
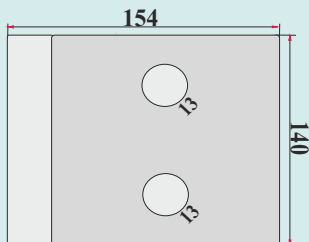
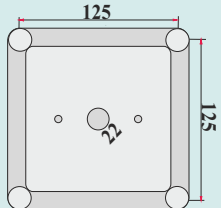
### 10.5 - IP 65 BÜYÜK BOY KISA ŞALTER KUTUSU IP 65 LARGE SIZE SHORT ENCLOSURE BOX



1-2-3-4 FAZ / Phase 40-50-63-80 A. AÇ-KAPA / On - Off  
1-2 FAZ / Phase 40-50-63-80 A. KUTUP DEĞİŞTİRİCİ / Changeover  
1-2 FAZ / Phase 40-50-63-80 A. ENVERSÖR / Reversing  
1-2 FAZ / Phase 40-50-63-80 A. 2-3-4 KADEMELİ / Steps

### KUT IP 6505

### 10.6 - IP 65 BÜYÜK BOY UZUN ŞALTER KUTUSU IP 65 LARGE SIZE LONG ENCLOSURE BOX



1-2-3-4 FAZ / Phase 40-50-63-80 A. AÇ-KAPA / On - Off  
1-2-3-4 FAZ / Phase 40-50-63-80 A. KUTUP DEĞİŞTİRİCİ / Changeover  
1-2-3-4 FAZ / Phase 40-50-63-80 A. ENVERSÖR / Reversing  
1-2-3-4 FAZ / Phase 40-50-63-80 A. 1-2-3-4-5-6-7 KADEMELİ / Steps  
1-2-3-4 FAZ / Phase 40-50-63-80 A. YILDIZ ÜÇGEN VE ÇİFT DEVİR  
MOT.ŞALTER / Star Delta and Double Speed Motor Control  
1-2-3-4 FAZ / Phase 100-125 A. AÇ-KAPA / On - Off  
1-2 FAZ / Phase 100-125 A. KUTUP DEĞİŞTİRİCİ / Changeover  
1-2 FAZ / Phase 100-125 A. ENVERSÖR / Reversing

### KUT IP 6506

DAHA BÜYÜK ŞALTERLER İÇİN LÜTFEN  
POLYESTER VE ABS PANOLARIMIZI TERCİH EDİNİZ.  
YOU NEED TO USE OUR POLYESTER  
AND ABS ENCLOSURES FOR LARGER CAM SWITCHES.

ÖN GÖRÜNÜŞ  
FRONT

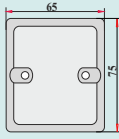
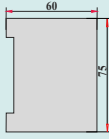
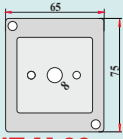
YANDAN GÖRÜNÜŞ  
SIDE

ALT KAPAK  
BOTTOM

SON ÜRÜN  
FINAL PRODUCT

UYGUN ŞALTERLER  
SUITABLE SWITCHES

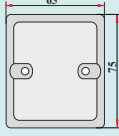
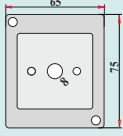
10.7 - IP 54 MİNİK BOY ŞALTER KUTUSU  
IP 54 MINI SIZE ENCLOSURE BOX



1-2-3-4 FAZ / Phase 10A. PAKO (AÇ-KAPA) / On - Off  
1-2 FAZ / Phase 10A. KUTUP DEĞİŞTİRİCİ / Changeover  
1 FAZ / Phase 10A. 2-3-4 KADEMELİ / Steps  
1-2 FAZ / Phase 10A. ENVERSÖR / Reversing

KUT M 00

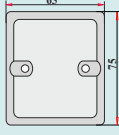
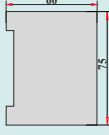
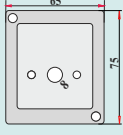
10.8 - IP 54 BÜYÜK BOY ŞALTER KUTUSU  
IP 54 LARGE SIZE ENCLOSURE BOX



1-2-3-4 FAZ / Phase 10 A. AÇ-KAPA / On - Off  
1-2-3-4 FAZ / Phase 10 A. KUTUP DEĞİŞTİRİCİ / Changeover  
1-2-3-4 FAZ / Phase 10 A. 1-2-3-4-5-6-7 KADEMELİ / Steps

KUT M 01

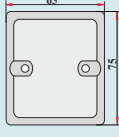
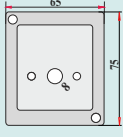
10.9 - IP 54 MİNİK BOY ETİKETLİ ŞALTER KUTUSU  
IP 54 MINI SIZE LABELED ENCLOSURE BOX



1-2-3-4 FAZ / Phase 10A. PAKO (AÇ-KAPA) / On - Off  
1-2 FAZ / Phase 10A. KUTUP DEĞİŞTİRİCİ / Changeover  
1 FAZ / Phase 10A. 2-3-4 KADEMELİ / Steps  
1-2 FAZ / Phase 10A. ENVERSÖR / Reversing

KUT ME 00

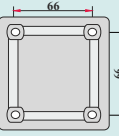
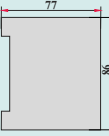
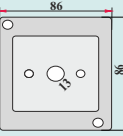
10.10 - IP 54 BÜYÜK BOY ETİKETLİ ŞALTER KUTUSU  
IP 54 LARGE SIZE LABELED ENCLOSURE BOX



1-2-3-4 FAZ / Phase 10 A. AÇ-KAPA / On - Off  
1-2-3-4 FAZ / Phase 10 A. KUTUP DEĞİŞTİRİCİ / Changeover  
1-2-3-4 FAZ / Phase 10 A. 1-2-3-4-5-6-7 KADEMELİ / Steps

KUT ME 01

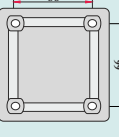
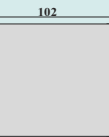
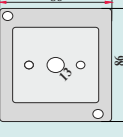
10.11 - IP 54 ORTA BOY KISA ŞALTER KUTUSU  
IP 54 MEDIUM SIZE SHORT ENCLOSURE BOX



1-2-3-4 FAZ / Phase 16-20-25-32A. AÇ KAPA / On - Off  
1-2 FAZ / Phase 16-20-25-32A. KUTUP DEĞİŞTİRİCİ / Changeover  
1-2 FAZ / Phase 16-20-25-32A. ENVERSÖR / Reversing

KUT 00

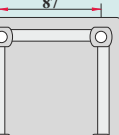
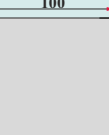
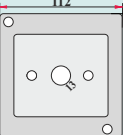
10.12 - IP 54 ORTA BOY UZUN PAKET  
IP 54 MEDIUM SIZE LONG ENCLOSURE BOX



1-2-3-4 FAZ / Phase 16-20-25-32 A. AÇ KAPA / On - Off  
1-2-3-4 FAZ / Phase 16-20-25-32 A. KUTUP DEĞİŞTİRİCİ / On - Off  
1-2-3-4 FAZ / Phase 16-20-25-32 A. ENVERSÖR / Reversing  
1 FAZ / Phase 1-2-3-4-5-6-7 KADEMELİ / Steps

KUT 01

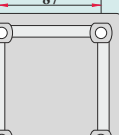
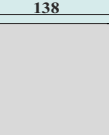
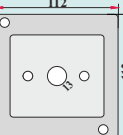
10.13 - IP 54 BÜYÜK BOY KISA ŞALTER KUTUSU  
IP 54 LARGE SIZE SHORT ENCLOSURE BOX



1-2-3-4 FAZ / Phase 40-50-63-80 A. AÇ-KAPA / On - Off  
1-2 FAZ / Phase 40-50-63-80 A. KUTUP DEĞİŞTİRİCİ / Changeover

KUT 02

10.14 - IP 54 BÜYÜK BOY UZUN ŞALTER KUTUSU  
IP 54 LARGE SIZE LONG ENCLOSURE BOX



1-2-3-4 FAZ / Phase 40-50-63-80 A. KUTUP DEĞİŞTİRİCİ / Changeover  
1-2-3-4 FAZ / Phase 40-50-63-80 A. ENVERSÖR / Reversing  
1-2-3-4 FAZ / Phase 40-50-63-80 A. YILDIZ ÜÇGEN VE ÇİFT DEVİR  
MOT.ŞALTER / Star Delta and Double Speed Motor Control  
1-2-3-4 FAZ / Phase 100-125 A. AÇ KAPA / On - Off  
1-2 FAZ / Phase 100-125 A. KUTUP DEĞİŞTİRİCİ / Changeover  
1-2 FAZ / Phase 100-125 A. ENVERSÖR / Reversing

KUT 03

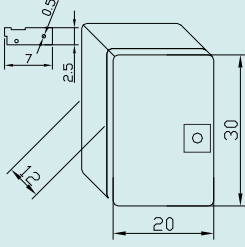
DAHA BÜYÜK ŞALTERLER İÇİN LÜTFEN POLYESTER VE ABS PANOLARIMIZI TERCİH EDİNİZ.  
YOU NEED TO USE OUR POLYESTER AND ABS ENCLOSURES FOR LARGER CAM SWITCHES.

ÇİZİM  
DRAWING

İÇ GÖRÜNÜŞ  
INTERIOR VIEW

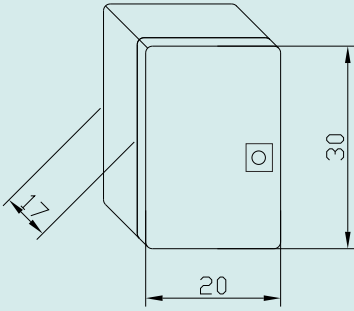
DIŞ GÖRÜNÜŞ  
EXTERIOR VIEW

11.1 - 20cm X 30cm X 12cm TABAN SAÇLI POLYESTER PANO  
20cm X 30cm X 12cm POLYESTER ENCLOSURES WITH BASE PLATE



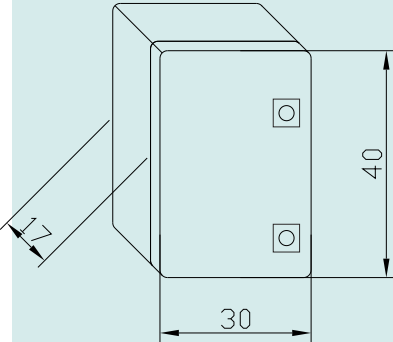
OPN 20x30x12

11.2 - 20cm X 30cm X 17cm TABAN SAÇLI POLYESTER PANO  
20cm X 30cm X 17cm POLYESTER ENCLOSURES WITH BASE PLATE



OPN 20x30x17

11.3 - 30cm X 40cm X 17cm TABAN SAÇLI POLYESTER PANO  
30cm X 40cm X 17cm POLYESTER ENCLOSURES WITH BASE PLATE



OPN 30x40x17

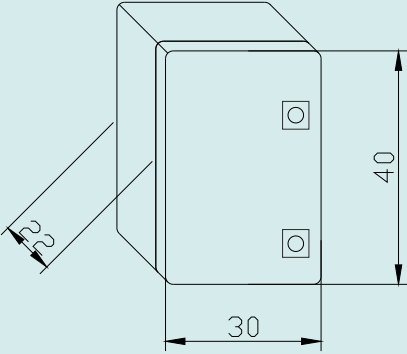


ÇİZİM  
DRAWING

İÇ GÖRÜNÜŞ  
INTERIOR VIEW

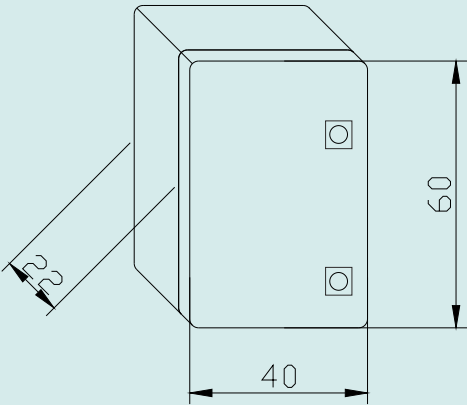
DIŞ GÖRÜNÜŞ  
EXTERIOR VIEW

11.4 - 30cm X 40cm X 22cm TABAN SACLI POLYESTER PANO  
30cm X 30cm X 22cm POLYESTER ENCLOSURES WITH BASE PLATE



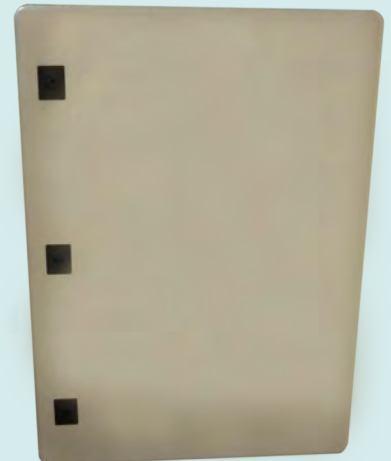
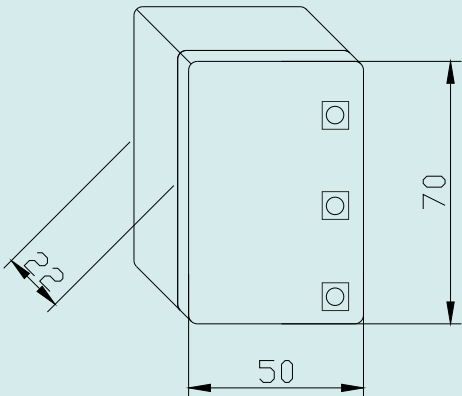
OPN 30x40x22

11.5 - 40cm X 60cm X 22cm TABAN SACLI POLYESTER PANO  
40cm X 60cm X 22cm POLYESTER ENCLOSURES WITH BASE PLATE

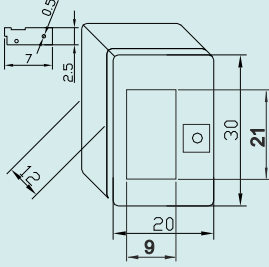


OPN 40x60x22

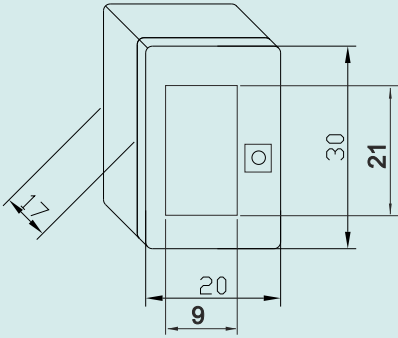
11.6 - 50cm X 70cm X 22cm POLYESTER TABAN SACLI PANO  
50cm X 70cm X 22cm POLYESTER ENCLOSURES WITH BASE PLATE



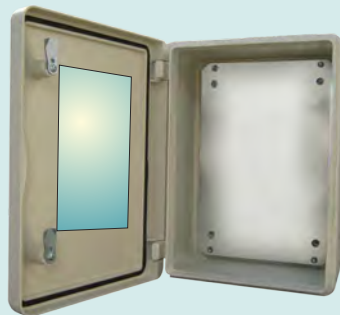
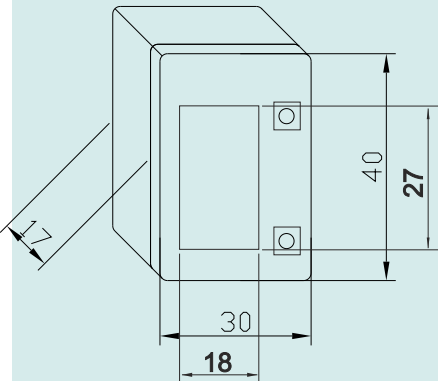
OPN 50x70x22

ÇİZİM  
DRAWINGİÇ GÖRÜNÜŞ  
INTERIOR VIEWDIŞ GÖRÜNÜŞ  
EXTERIOR VIEW11.7 - 20cm X 30cm X 12cm POLYESTER PLEKSİGLAS ŞEFFAF CAMLI PANO  
20cm X 30cm X 12cm POLYESTER ENCLOSURES WITH TRANSPARENT PLEXIGLASS WINDOW

OPN 20x30x12

11.8 - 20cm X 30cm X 17cm POLYESTER PLEKSİGLAS ŞEFFAF CAMLI PANO  
20cm X 30cm X 17cm POLYESTER ENCLOSURES WITH TRANSPARENT PLEXIGLASS WINDOW

OPN 20x30x17

11.9 - 30cm X 40cm X 17cm POLYESTER PLEKSİGLAS ŞEFFAF CAMLI PANO  
30cm X 40cm X 17cm POLYESTER ENCLOSURES WITH TRANSPARENT PLEXIGLASS WINDOW

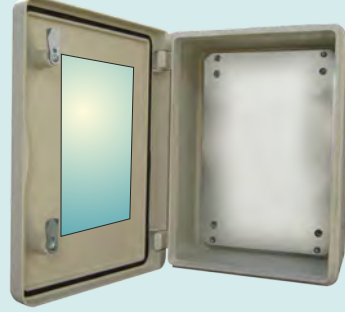
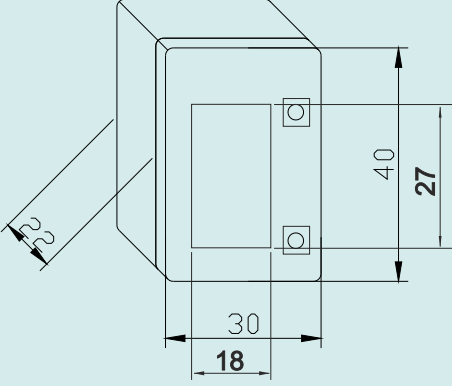
OPN 30x40x17

ÇİZİM  
DRAWING

İÇ GÖRÜNÜŞ  
INTERIOR VIEW

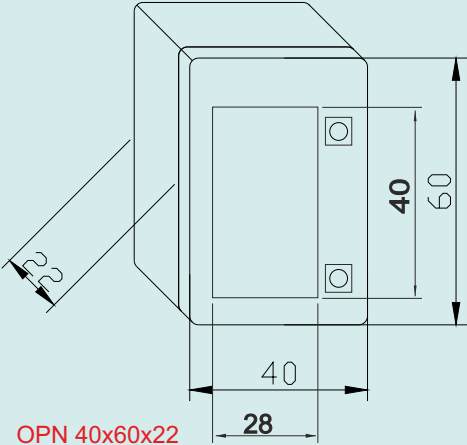
DIŞ GÖRÜNÜŞ  
EXTERIOR VIEW

11.10 - 30cm X 40cm X 22cm POLYESTER PLEKSİGLAS ŞEFFAF CAMLI PANO  
30cm X 30cm X 22cm POLYESTER ENCLOSURES WITH TRANSPARENT PLEXIGLASS WINDOW



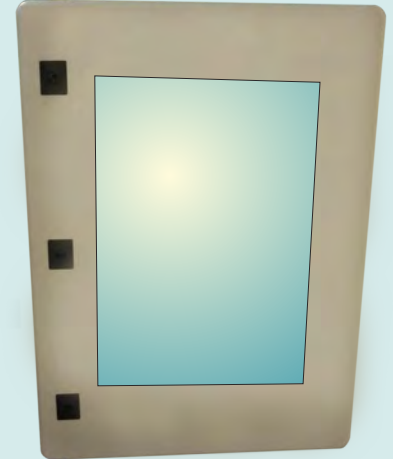
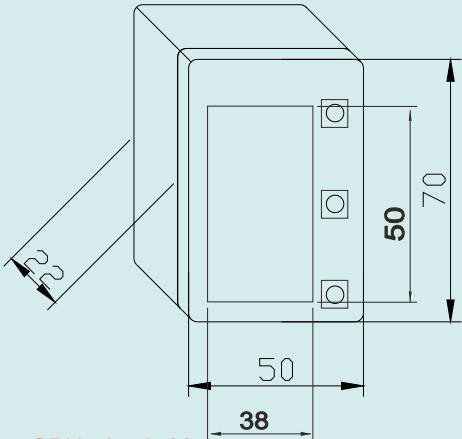
OPN 30x40x22

11.11 - 40cm X 60cm X 22cm POLYESTER PLEKSİGLAS ŞEFFAF CAMLI PANO  
40cm X 60cm X 22cm POLYESTER ENCLOSURES WITH TRANSPARENT PLEXIGLASS WINDOW



OPN 40x60x22

11.12 - 50cm X 70cm X 22cm POLYESTER PLEKSİGLAS ŞEFFAF CAMLI PANO  
50cm X 70cm X 22cm POLYESTER ENCLOSURES WITH TRANSPARENT PLEXIGLASS WINDOW



OPN 50x70x22



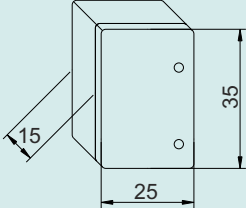


ÇİZİM  
DRAWING

İÇ GÖRÜNÜŞ  
INTERIOR VIEW

DIŞ GÖRÜNÜŞ  
EXTERIOR VIEW

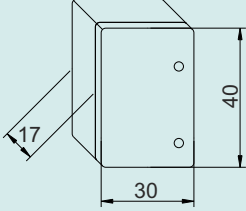
12.1 - 25cm X 35cm X 15cm OPAK KAPAKLI POLİKARBONAT / ABS PANO  
25cm X 35cm X 15cm POLYCARBONATE / ABS ENCLOSURES WITH OPAQUE DOOR



OPKN 25x35x15



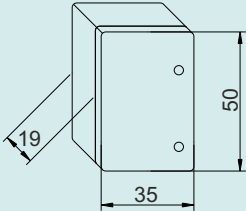
12.2 - 30cm X 40cm X 17cm OPAK KAPAKLI POLİKARBONAT / ABS PANO  
30cm X 40cm X 17cm POLYCARBONATE / ABS ENCLOSURES WITH OPAQUE DOOR



OPKN 30x40x17



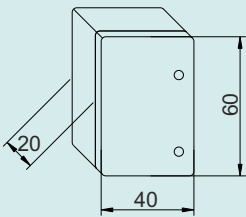
12.3 - 35cm X 50cm X 19cm OPAK KAPAKLI POLİKARBONAT / ABS PANO  
35cm X 50cm X 19cm POLYCARBONATE / ABS ENCLOSURES WITH OPAQUE DOOR



OPKN 35x50x19



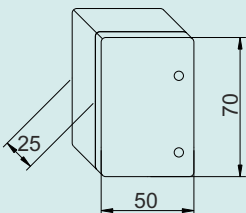
12.4 - 40cm X 60cm X 20cm OPAK KAPAKLI POLİKARBONAT / ABS PANO  
40cm X 60cm X 20cm POLYCARBONATE / ABS ENCLOSURES WITH OPAQUE DOOR



OPKN 40x60x20



12.5 - 50cm X 70cm X 25cm OPAK KAPAKLI POLİKARBONAT / ABS PANO  
50cm X 70cm X 25cm POLYCARBONATE / ABS ENCLOSURES WITH OPAQUE DOOR

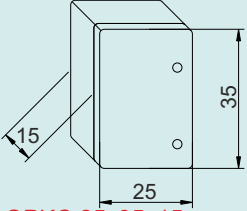


OPKN 50x70x25



**ÇİZİM**  
DRAWING**İÇ GÖRÜNÜŞ**  
INTERIOR VIEW**DIŞ GÖRÜNÜŞ**  
EXTERIOR VIEW

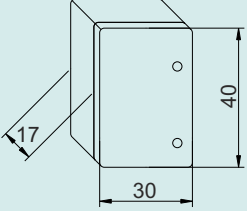
12.6 - 25cm X 35cm X 15cm CAM KAPAKLI POLİKARBONAT / ABS PANO  
25cm X 35cm X 15cm POLYCARBONATE / ABS ENCLOSURES WITH TRANSPARENT DOOR



OPKC 25x35x15



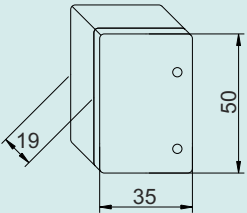
12.7 - 30cm X 40cm X 17cm CAM KAPAKLI POLİKARBONAT / ABS PANO  
30cm X 40cm X 17cm POLYCARBONATE / ABS ENCLOSURES WITH TRANSPARENT DOOR



OPKC 30x40x17



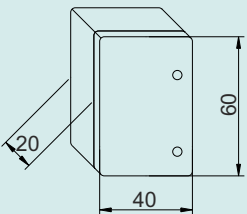
12.8 - 35cm X 50cm X 19cm CAM KAPAKLI POLİKARBONAT / ABS PANO  
35cm X 50cm X 19cm POLYCARBONATE / ABS ENCLOSURES WITH TRANSPARENT DOOR



OPKC 35x50x19



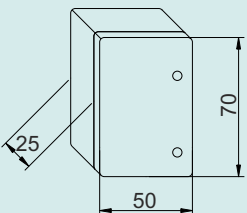
12.9 - 40cm X 60cm X 20cm CAM KAPAKLI POLİKARBONAT / ABS PANO  
40cm X 60cm X 20cm POLYCARBONATE / ABS ENCLOSURES WITH TRANSPARENT DOOR



OPKC 40x60x20



12.10 - 50cm X 70cm X 25cm CAM KAPAKLI POLİKARBONAT / ABS PANO  
50cm X 70cm X 25cm POLYCARBONATE / ABS ENCLOSURES WITH TRANSPARENT DOOR



OPKC 50x70x25



Tesislerimizde üretimini yaptığımız Opaş ve Pas marka ürünlerimiz, modern test cihazlarında tüm kontrolleri yapılarak piyasaya sunulmaktadır.



*Our products reliability is guaranteed by the use of in - house technologies throughout the entire production cyler from design and construction to test on each component used in manufacturing and testing the final product.*

# OPAS ELK. MLZ. LTD. ŞTi.

NECİP FAZIL MAH. DİLEKTAŞI SOKAK

No:37/A Y.DUDULLU ÜMRANIYE / İSTANBUL / TÜRKİYE

TEL: +90 216 314 55 93

FAX: +90 216 364 19 31

E-MAIL :

INFO@OPASCOMPANY.COM

OPAS@OPASPAKO.COM

2010

WWW.OPASCOMPANY.COM